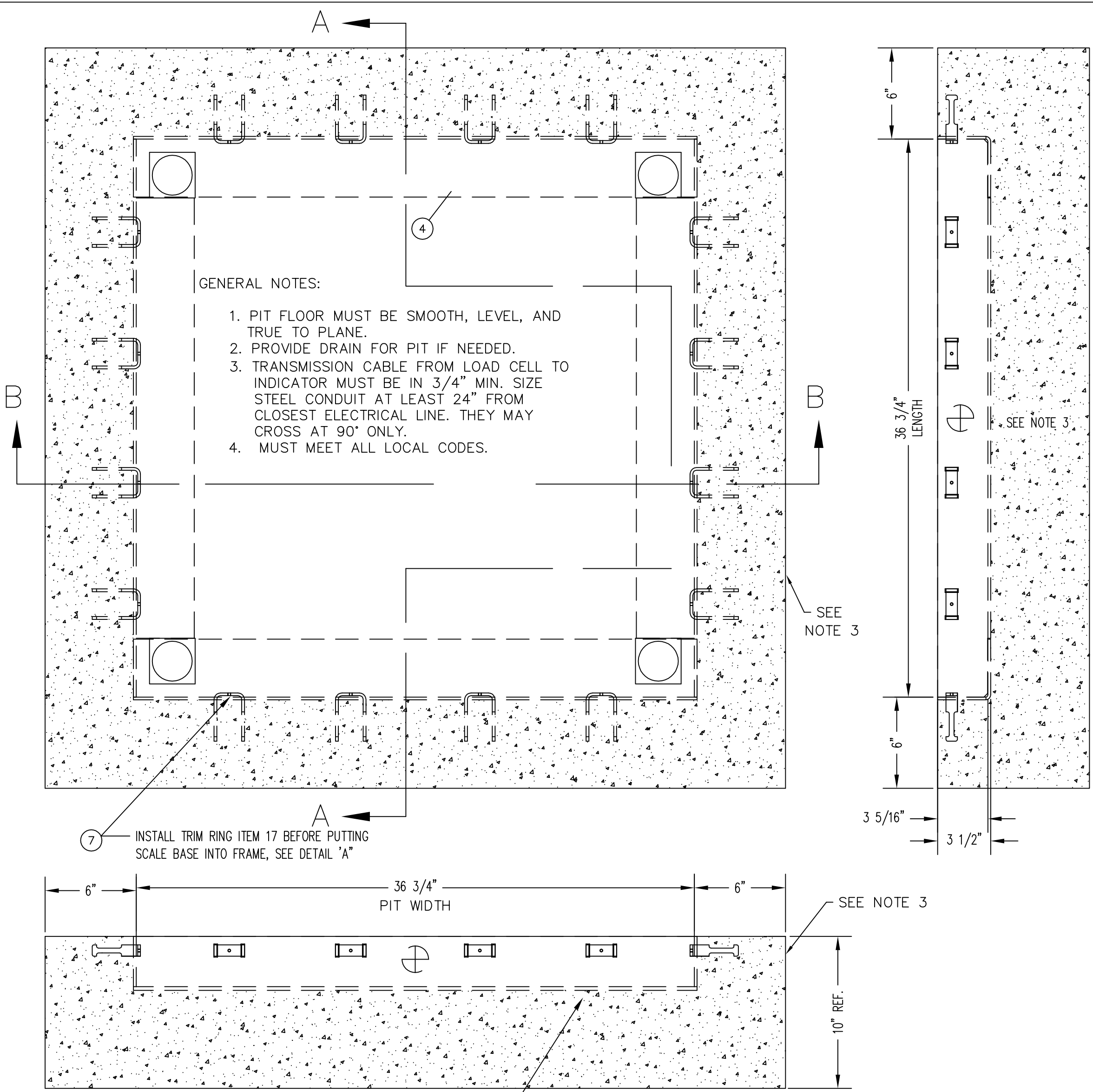
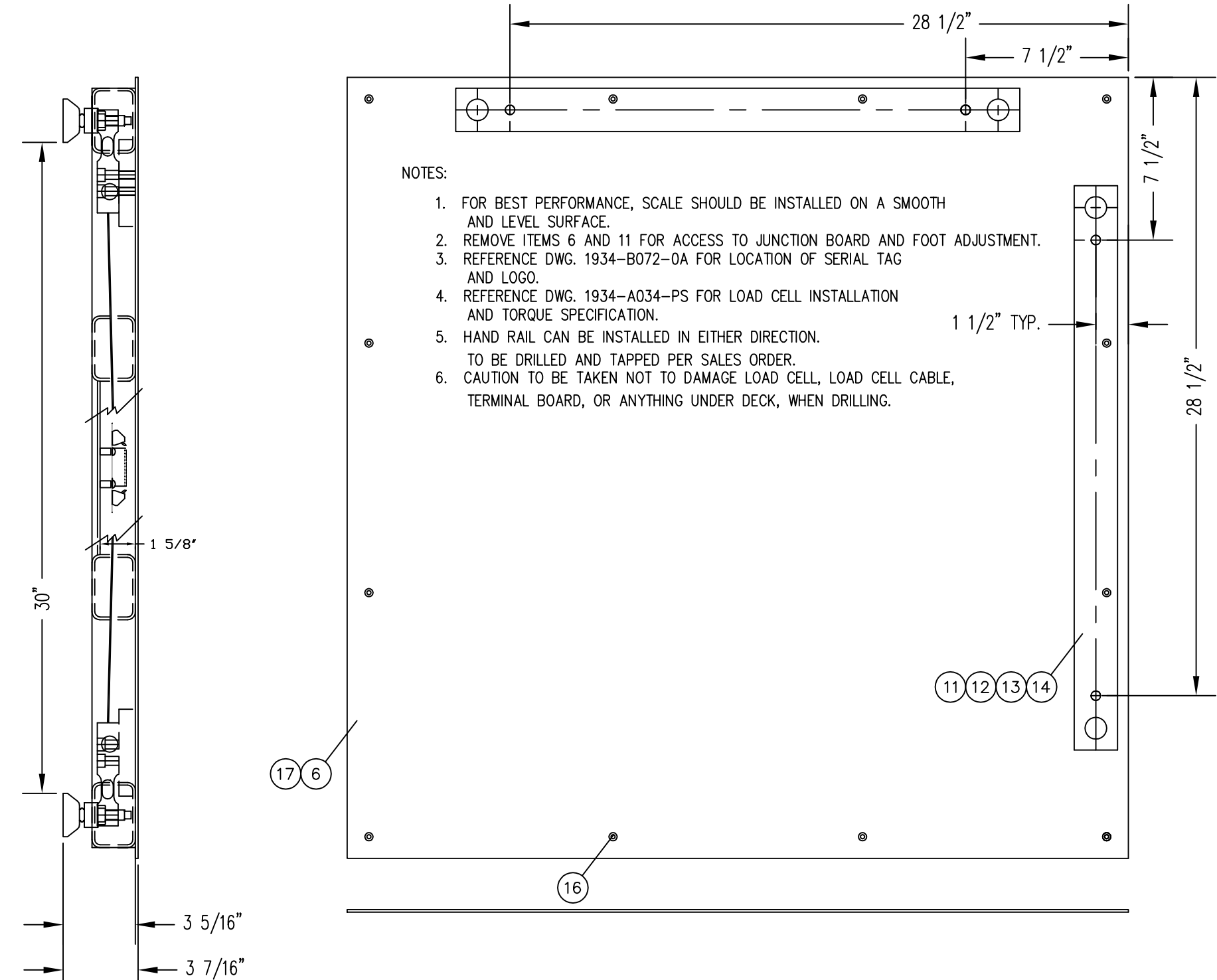
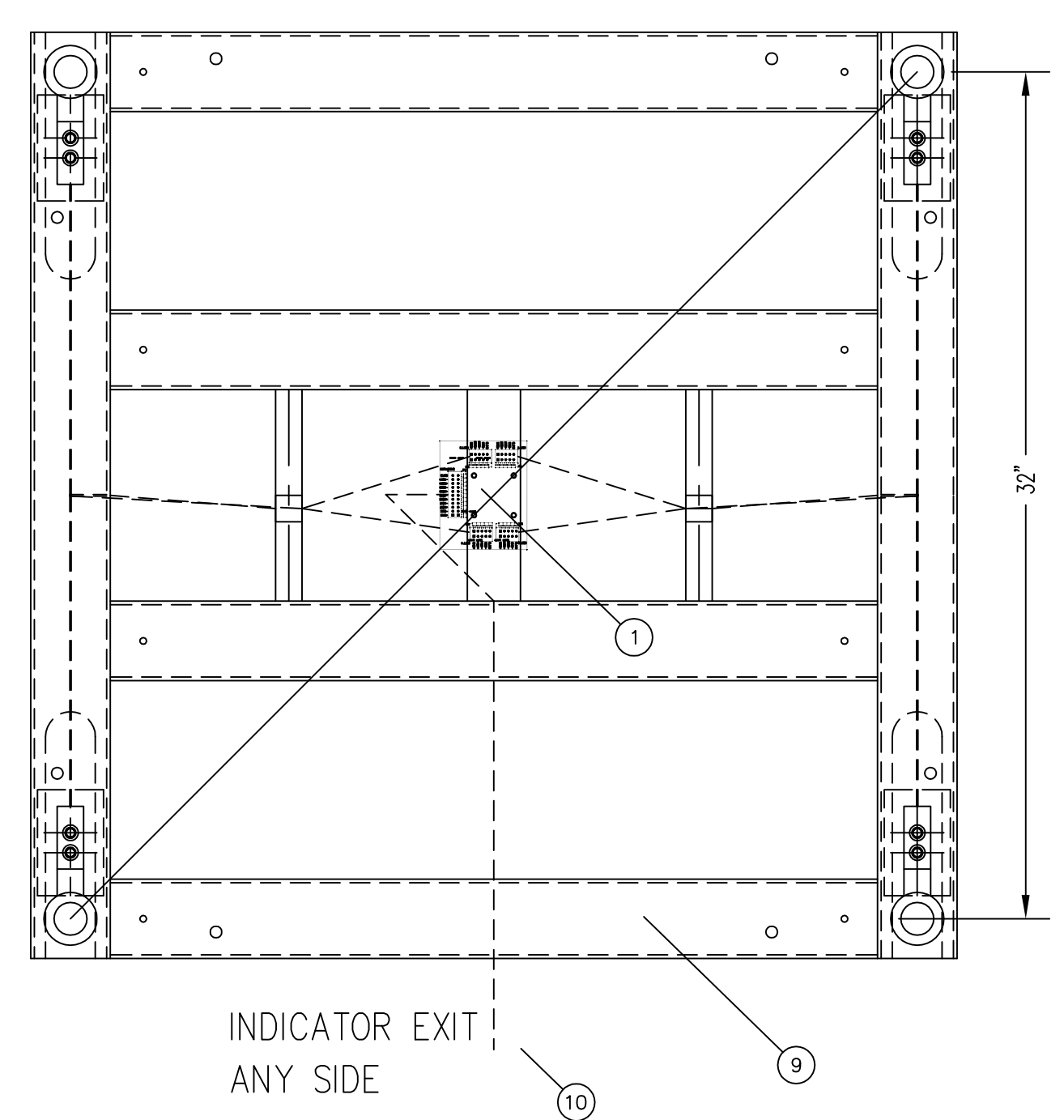


REVISION RECORD			
LTR	DESCRIPTION	DATE	BY
A	RELEASED FOR PRODUCTION	12/22/16	28039 GPL

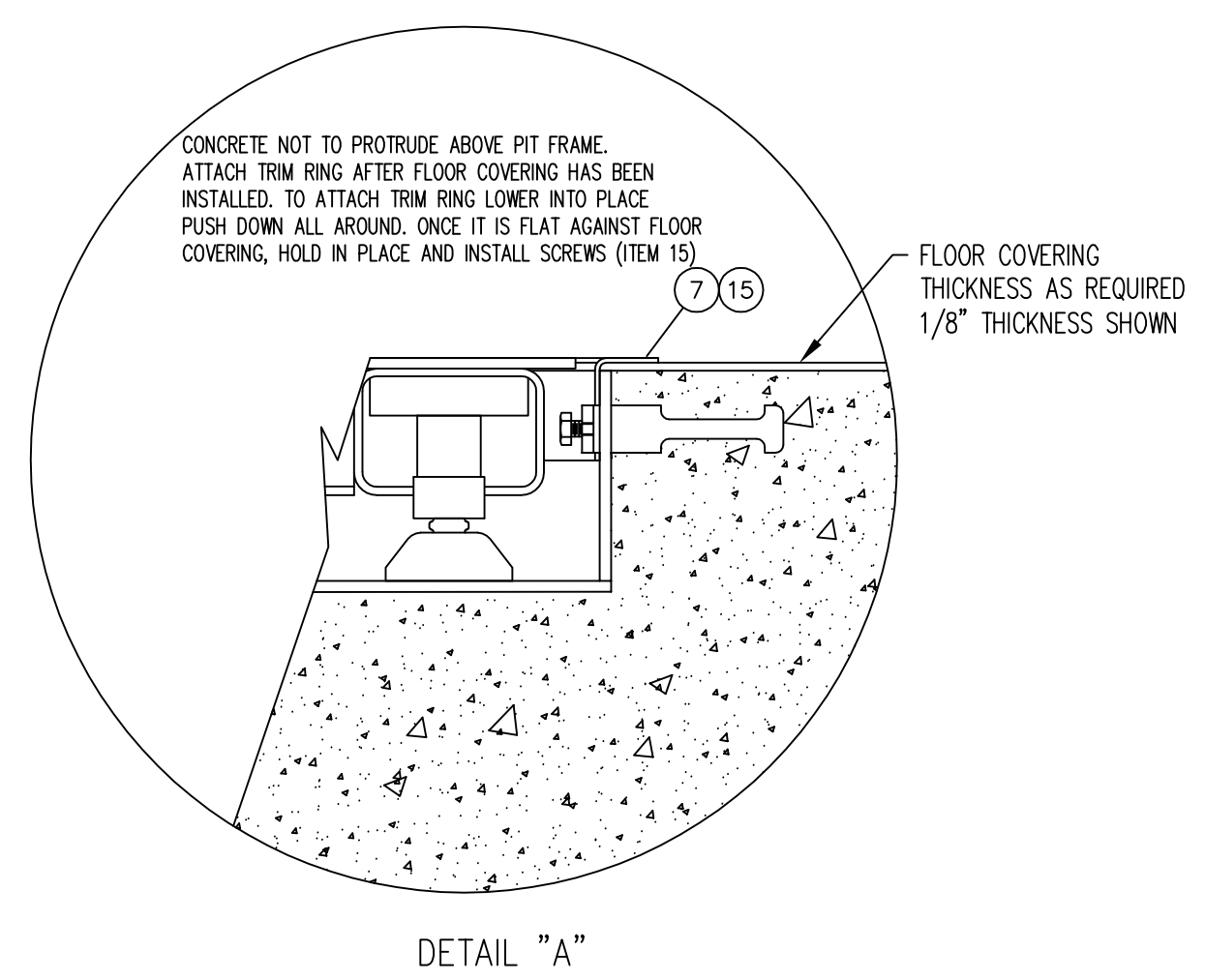
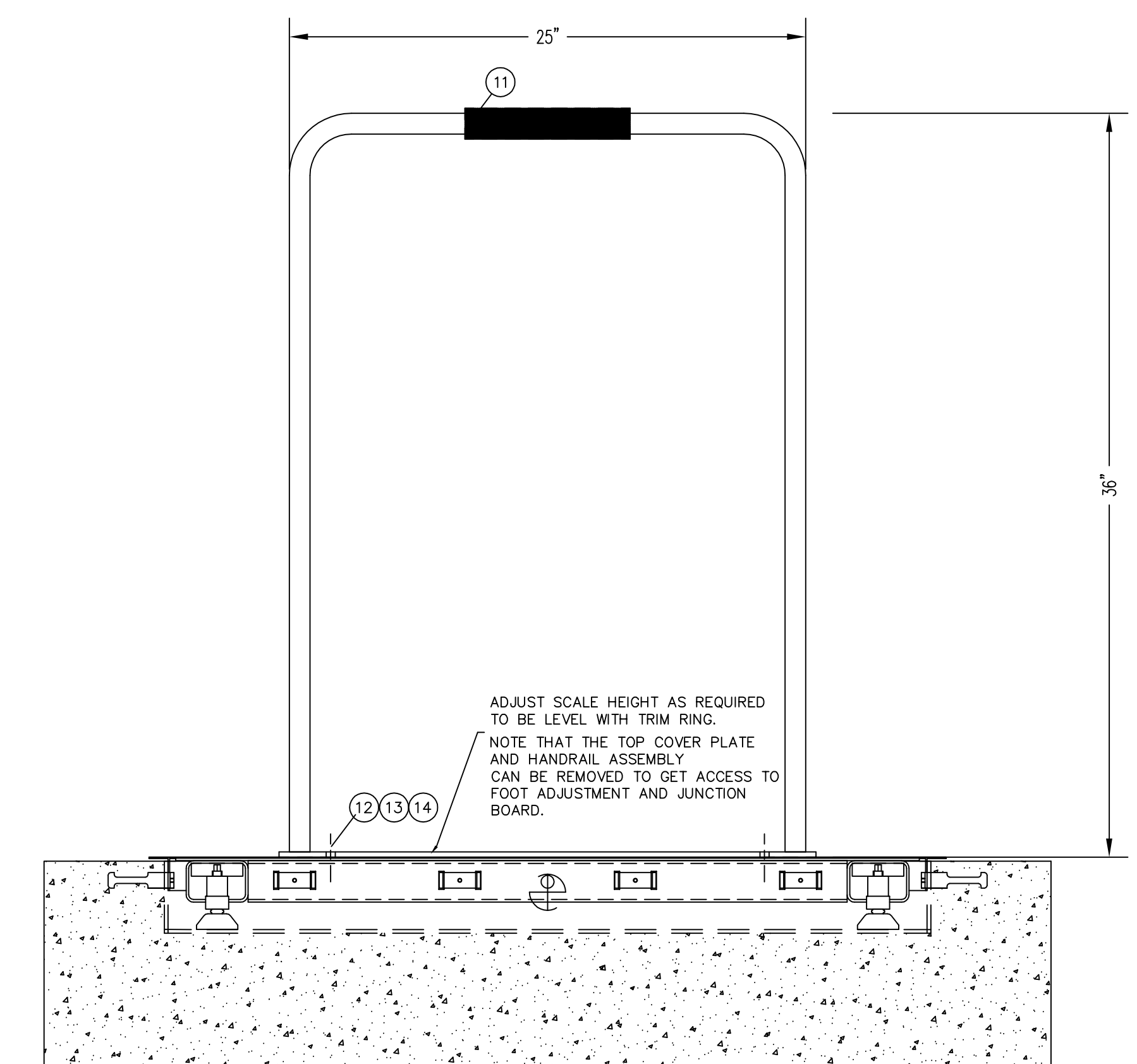


SECTION A-A



- NOTES:**
1. FOR BEST PERFORMANCE, SCALE SHOULD BE INSTALLED ON A SMOOTH AND LEVEL SURFACE.
 2. REMOVE ITEMS 6 AND 11 FOR ACCESS TO JUNCTION BOARD AND FOOT ADJUSTMENT.
 3. REFERENCE DWG. 1934-B072-0A FOR LOCATION OF SERIAL TAG AND LOGO.
 4. REFERENCE DWG. 1934-A034-PS FOR LOAD CELL INSTALLATION AND TORQUE SPECIFICATION.
 5. HAND RAIL CAN BE INSTALLED IN EITHER DIRECTION. TO BE DRILLED AND TAPPED PER SALES ORDER.
 6. CAUTION TO BE TAKEN NOT TO DAMAGE LOAD CELL, LOAD CELL CABLE, TERMINAL BOARD, OR ANYTHING UNDER DECK, WHEN DRILLING.

SECTION B-B



QTY.	QTY.	QTY.	ITEM	PART/DWG. NUMBER	DESCRIPTION	MATERIAL OR SOURCE	WT. EACH
1	-	17	1914-0030-18	COVER PLATE	HANDRAIL 3' SIDE		45.4
12	12	16	6021-1224	SCW FLAT HEAD	#12-24 x 3/4 S.S.		.01
16	16	15	6021-1002	SCW HEX HD	#10-32 x 1/2" S.S.		.01
2	-	14	6024-0019	WASHER FLAT	3/8" S.S.		.01
2	-	13	6024-0046	WASHER LOCK	3/8" S.S.		.01
2	-	12	6007-0041	BOLT HEX HD	3/8-16 x 1" S.S.		.04
1	-	11	1934-B110-0A	HANDRAIL ASSY			8.7
1	1	10	1914-0033-0A	LOAD CELL CABLE			1.0
1	1	9	1914-0032-0A	WEIGHBRIDGE	36" x 36"		82.4
REF	REF	8	LFB-500HMT	LOAD CELL			1.5
1	1	7	1914-0031-0A	TRIM RING	S.S.		6.6
-	1	6	1914-0030-08	COVER PLATE	S.S. NO HANDRAIL		45.4
1	1	5	1934-B072-0A	I.D. MARKING			0.1
1	1	4	1914-0029-0A	PIT STEEL ASS'Y.			62.1
REF	REF	3	1930-B363-0A	F.H. FOOT ASSY.	2" DIA.		0.9
REF	REF	2	6021-2064	S.H. CAP SCREW	3/8-24 UNF-2A x 1 1/4"		0.5
REF	REF	1	1914-0009-0A	JUNCTION BOARD			2.0

QTY.	QTY.	QTY.	ITEM	PART/DWG. NUMBER	DESCRIPTION	MATERIAL OR SOURCE	WT. EACH
222	213	WT.			PARTS/MATERIAL LIST		
-1A	-0A	ASSY					

UNLESS OTHERWISE SPECIFIED TOLERANCE ON DIMENSIONS ARE:
 ANGLES ± 1/2"
 INTEGERS/FRACTIONS ± 1/16 IN.
 DECIMALS (.X) ± .03 IN.
 DECIMALS (.XX) ± .01 IN.
 DECIMALS (.XXX) ± .005 IN.
 NOTE: WHOLE NUMBERS MUST BE WRITTEN XX.000 TO INVOLVE DECIMAL TOLERANCES.

THIS DRAWING IS THE PROPERTY OF THE CARDINAL SCALE MFG. CO. AND SHALL NOT BE USED NOR REPRODUCED EITHER WHOLLY OR IN PART EXCEPT WITH WRITTEN AUTHORIZATION. ALL RIGHTS OF DESIGN OR INVENTION ARE RESERVED.

Cardinal
 Cardinal Scale Manufacturing Co.
 WEBB CITY, MISSOURI 64479

CARDINAL DETECTO FULLER WEIGHING SYSTEMS

TITLE: FINAL ASSY. (ID-3636S-) W/S.S. COVER AND S.S. TRIM RING

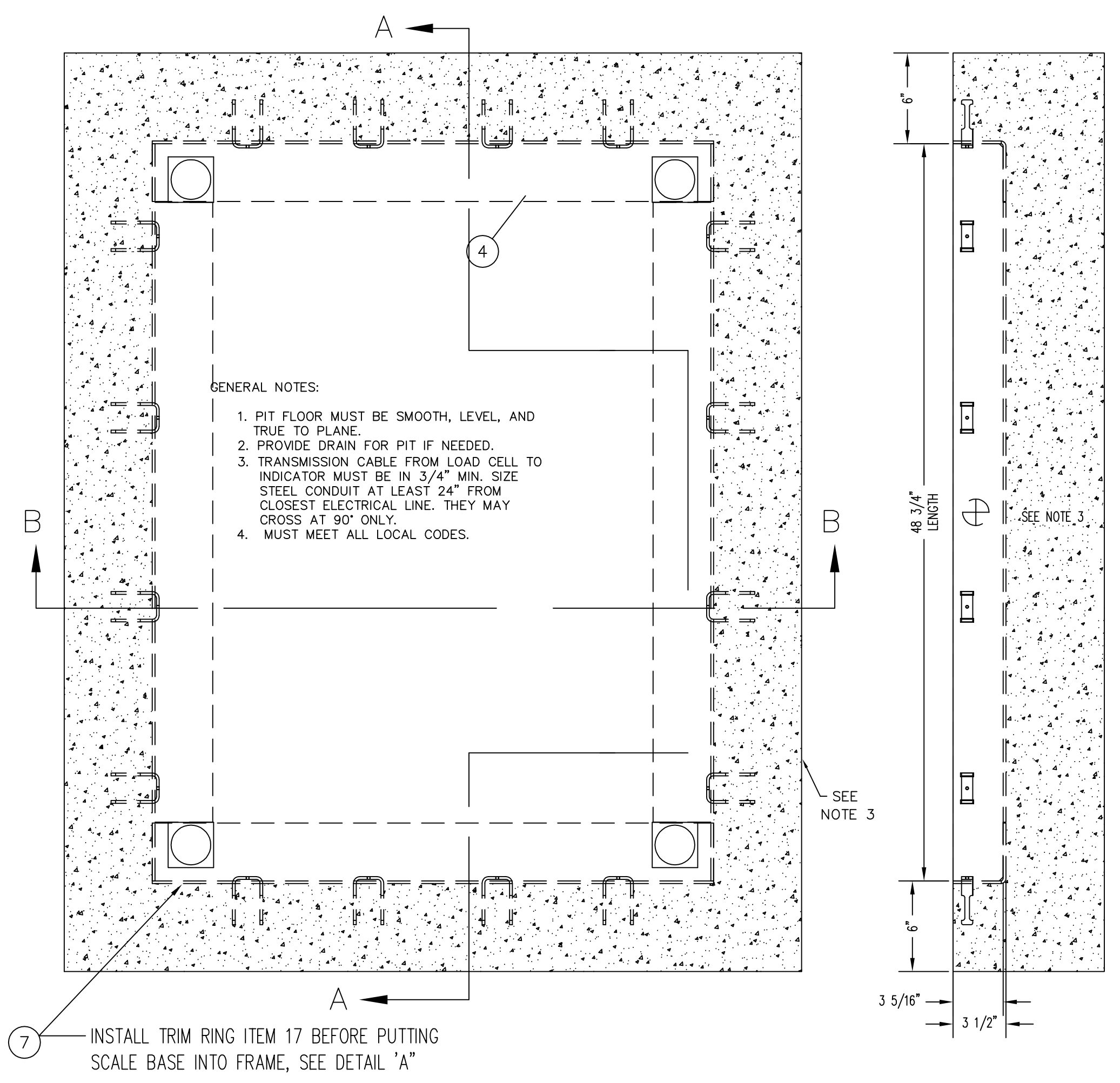
SCALE: NTS DO NOT SCALE DRAWING NEXT ASSEMBLY

DR. GPL DATE 12/21/16

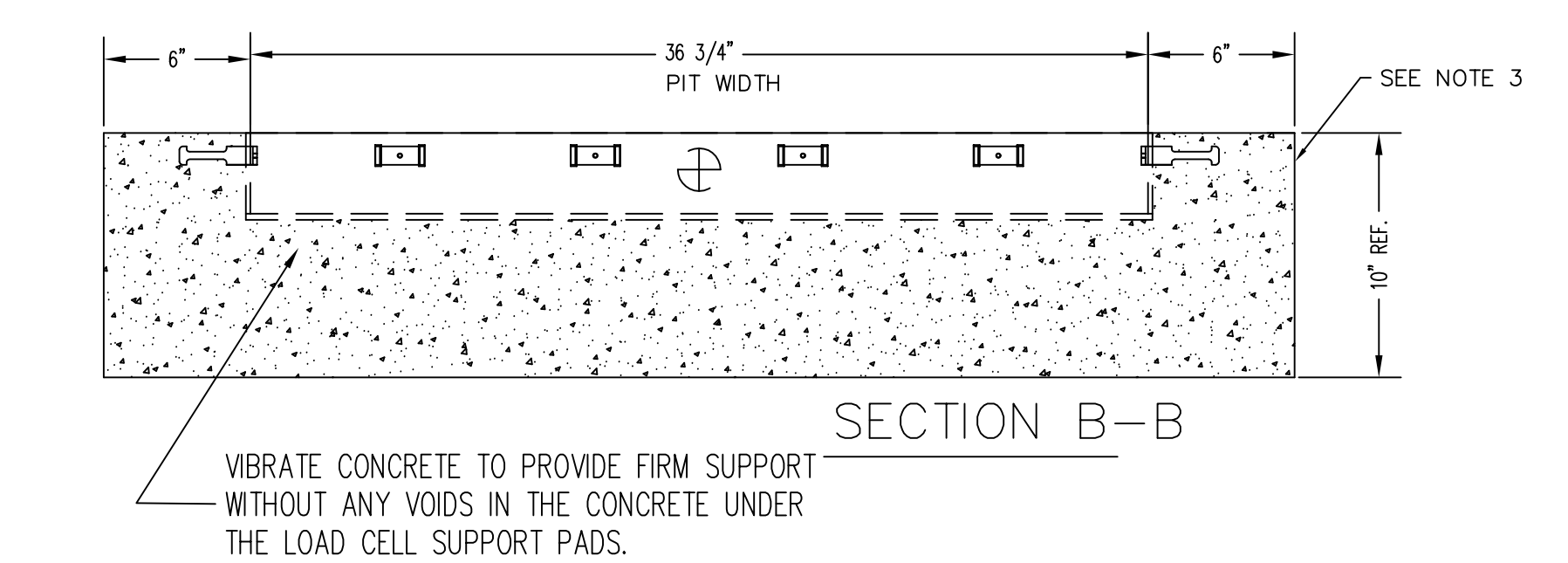
CH. DATE

MODEL ID-3636S-XXXX SHEET 1 OF 1 DWG. NO. 1914-0028-0A REV. A

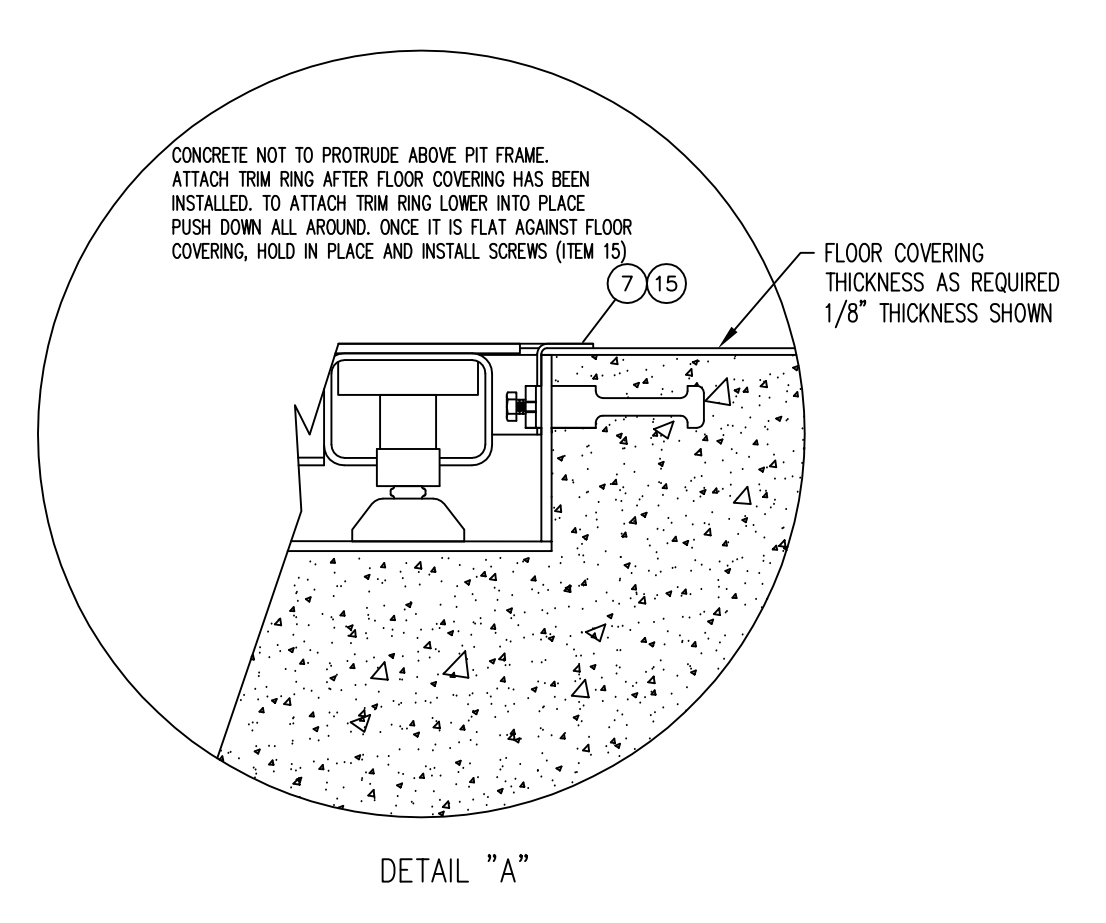
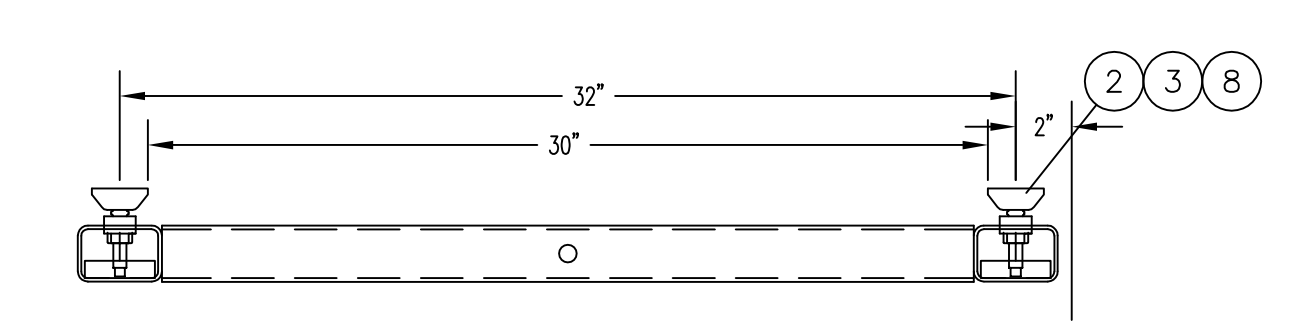
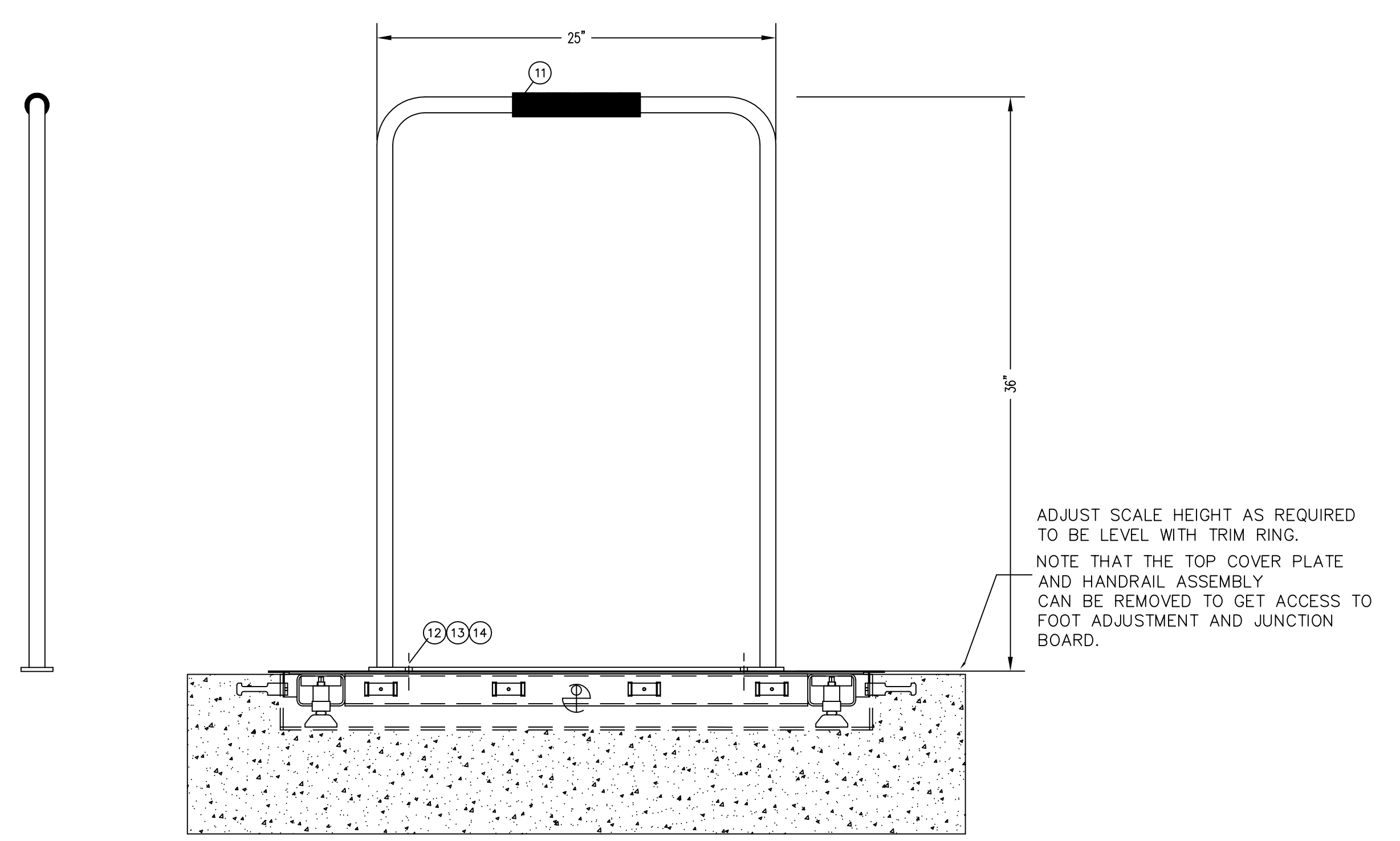
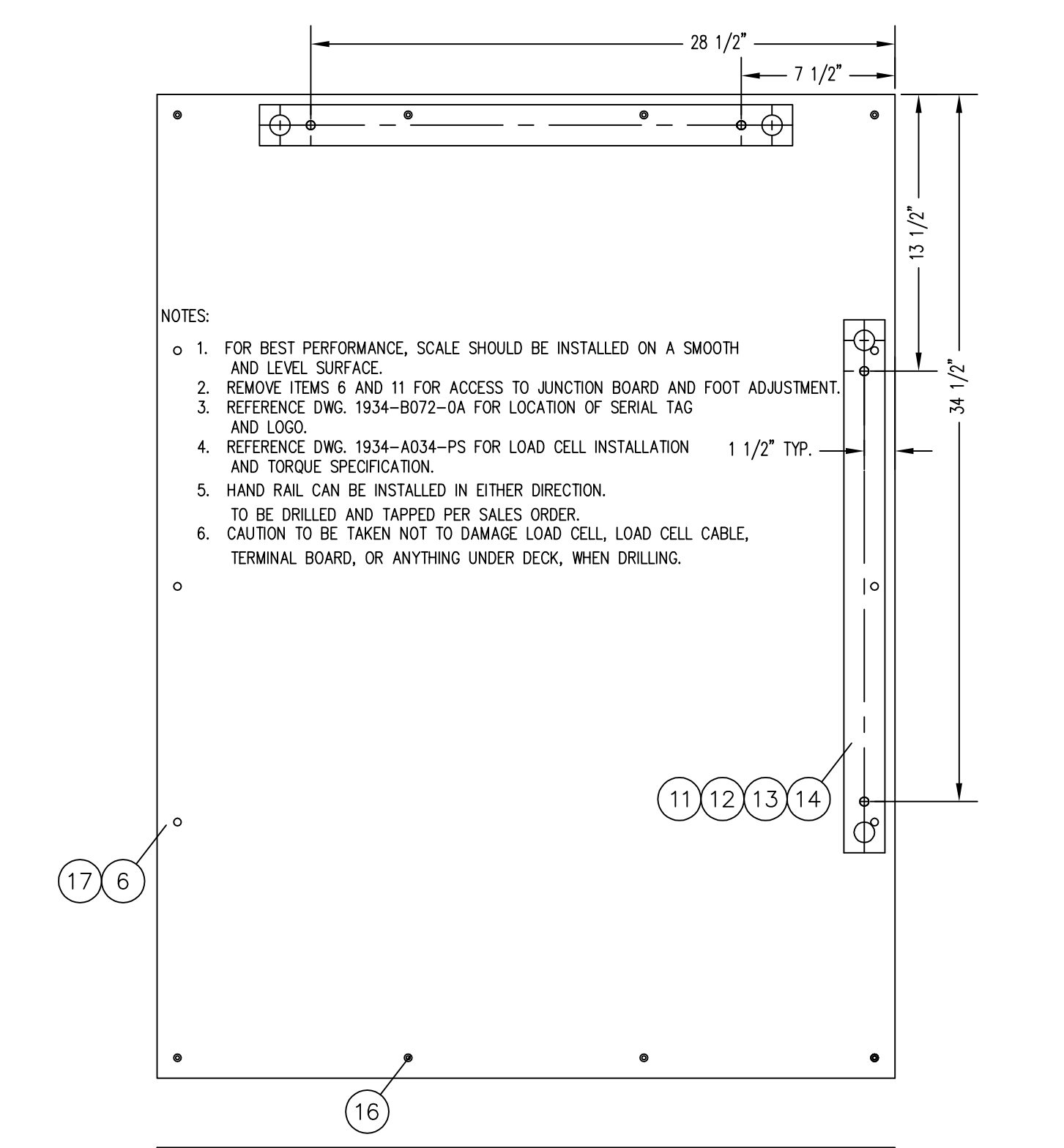
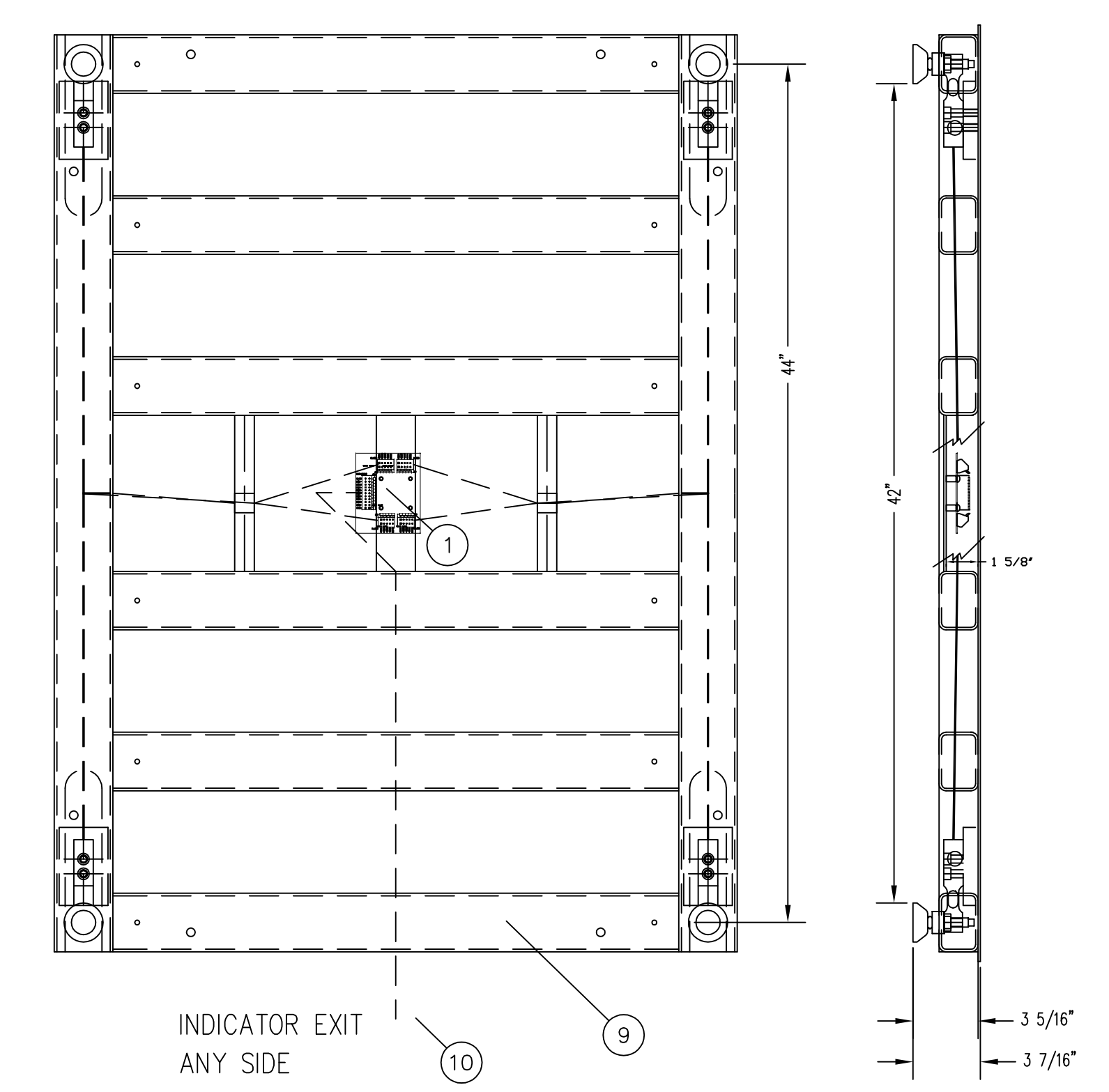
REVISION RECORD			
LTR	DESCRIPTION	DATE	BY
A	RELEASED FOR PRODUCTION	1/10/17	28045 GPL



SECTION A-A



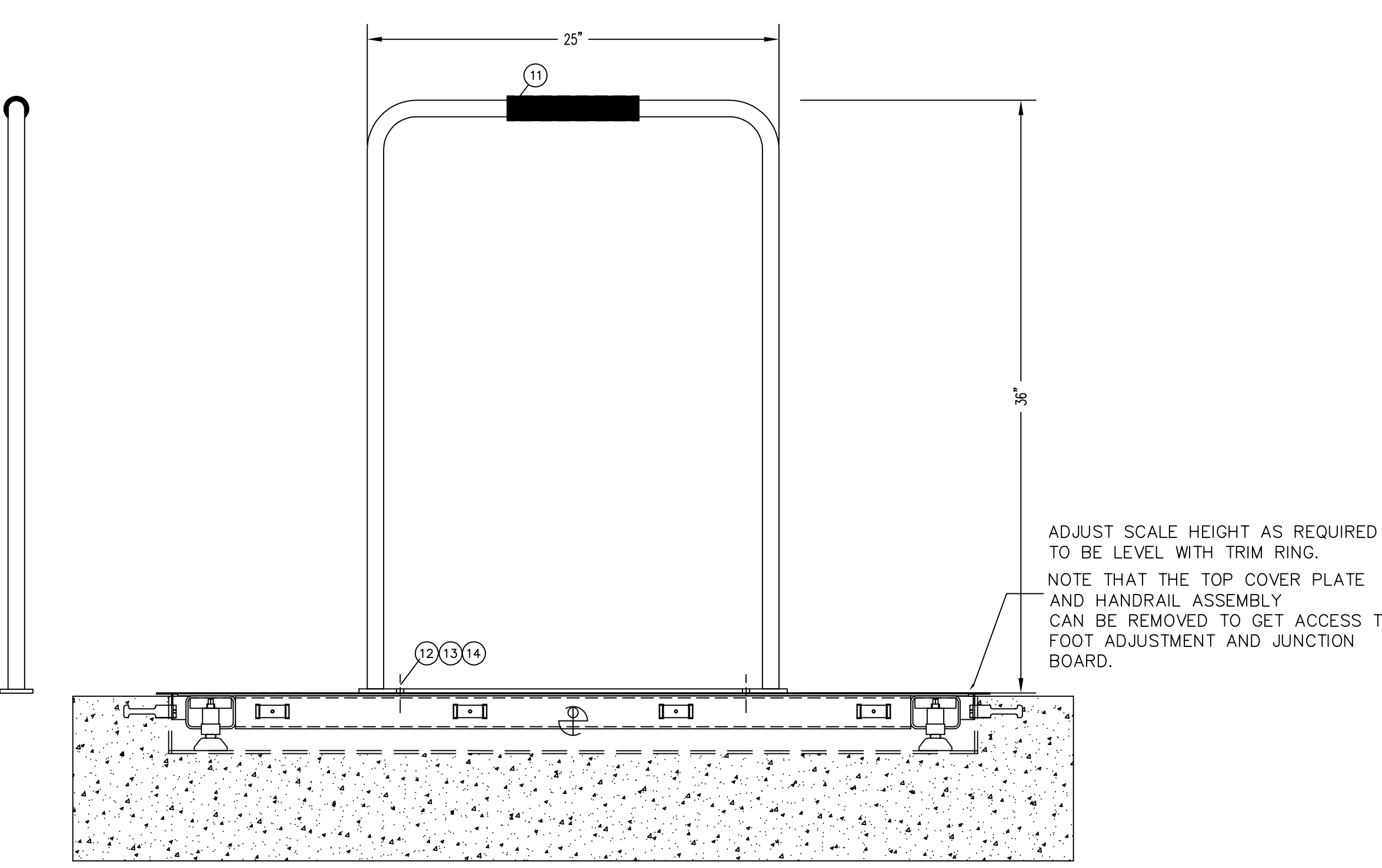
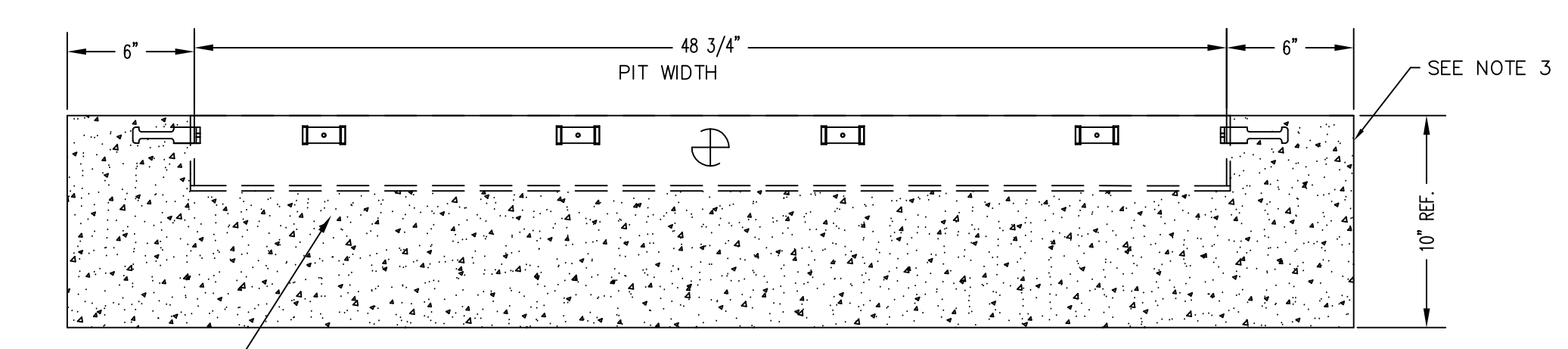
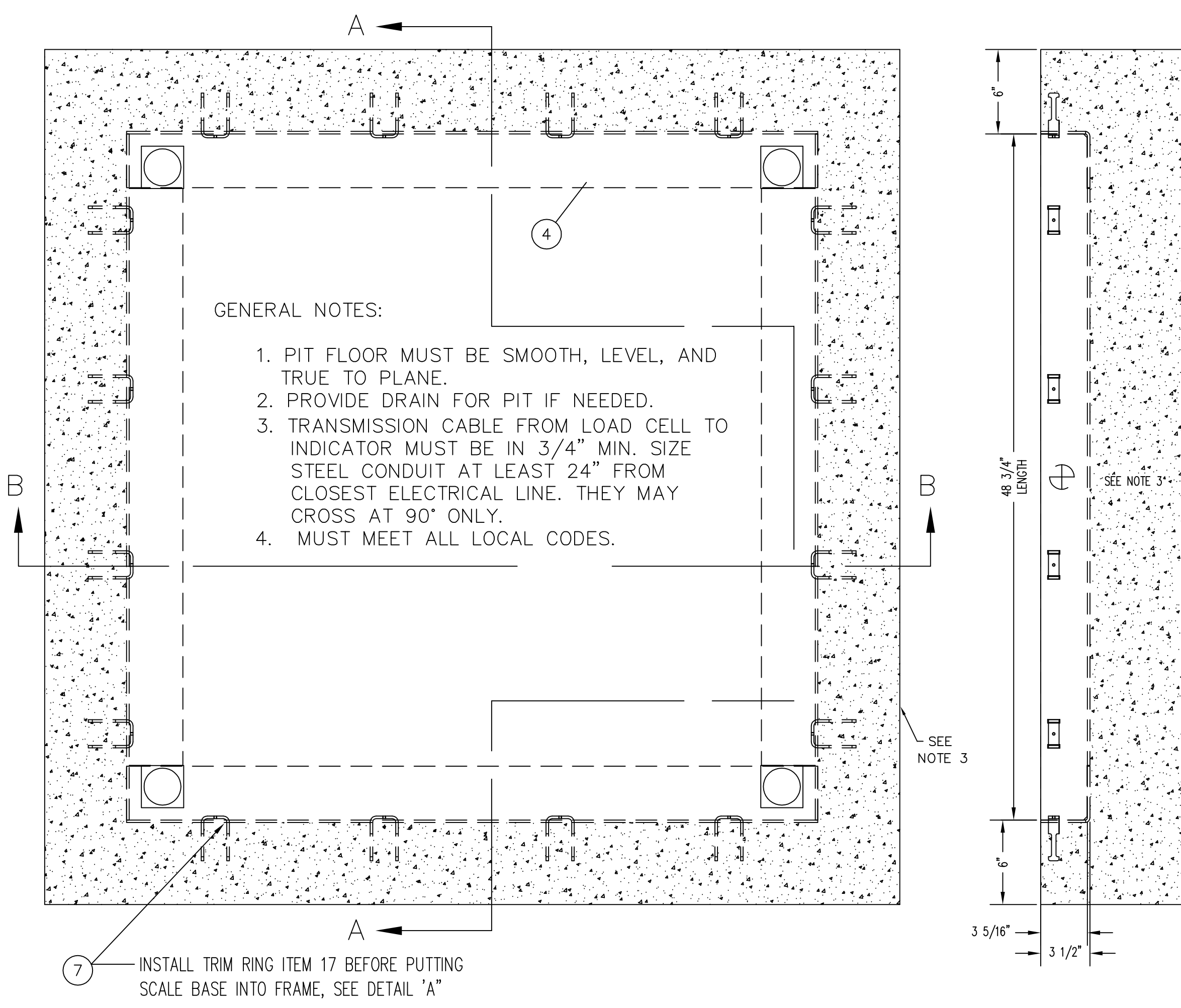
SECTION B-B



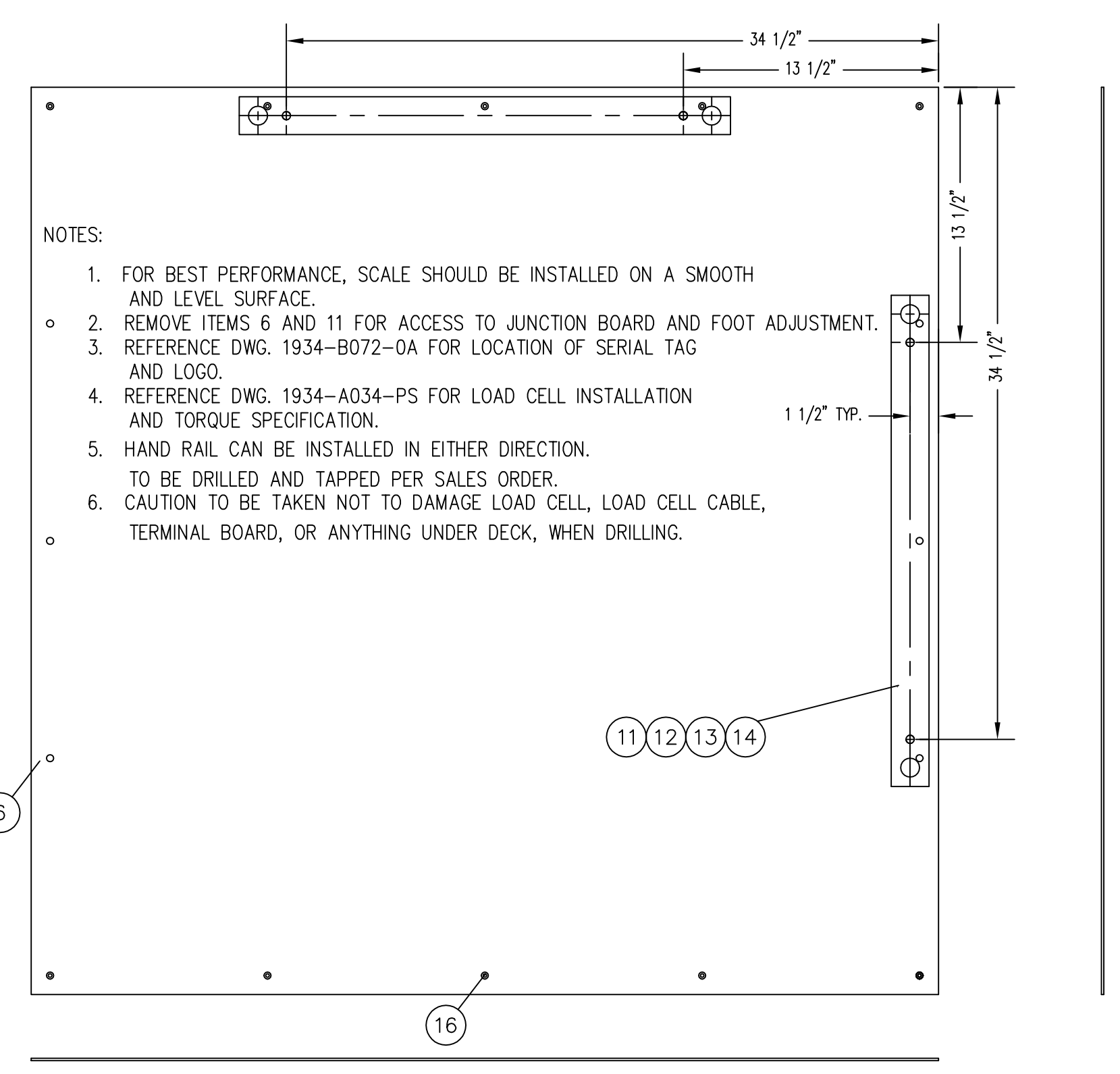
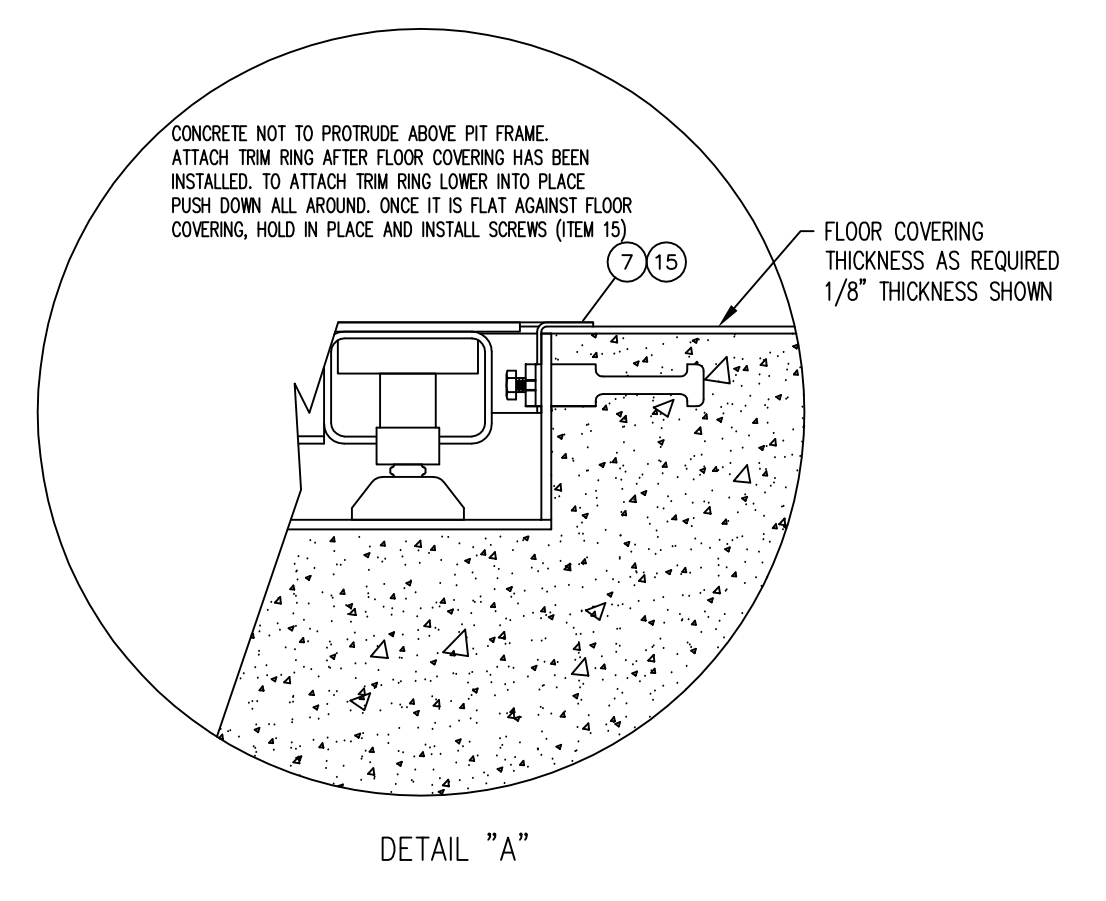
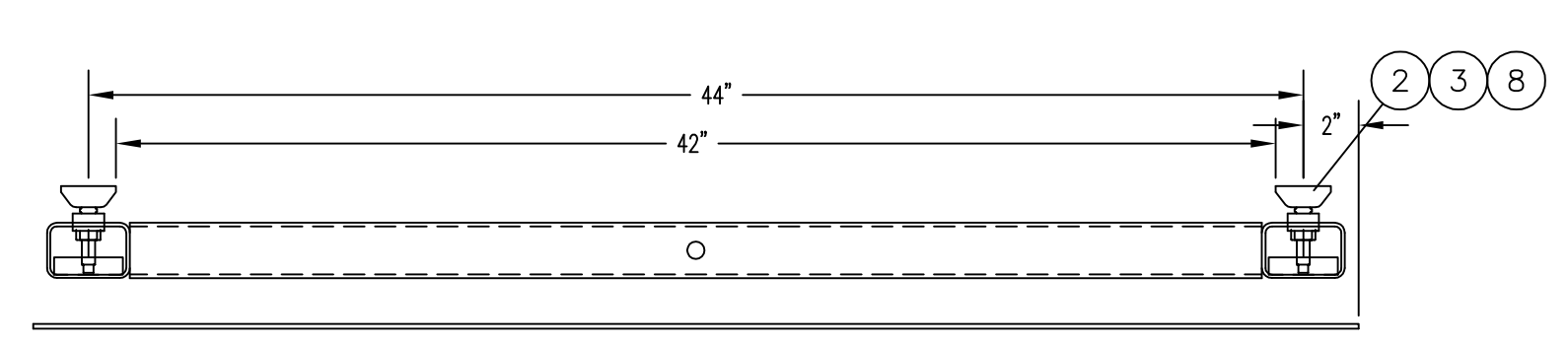
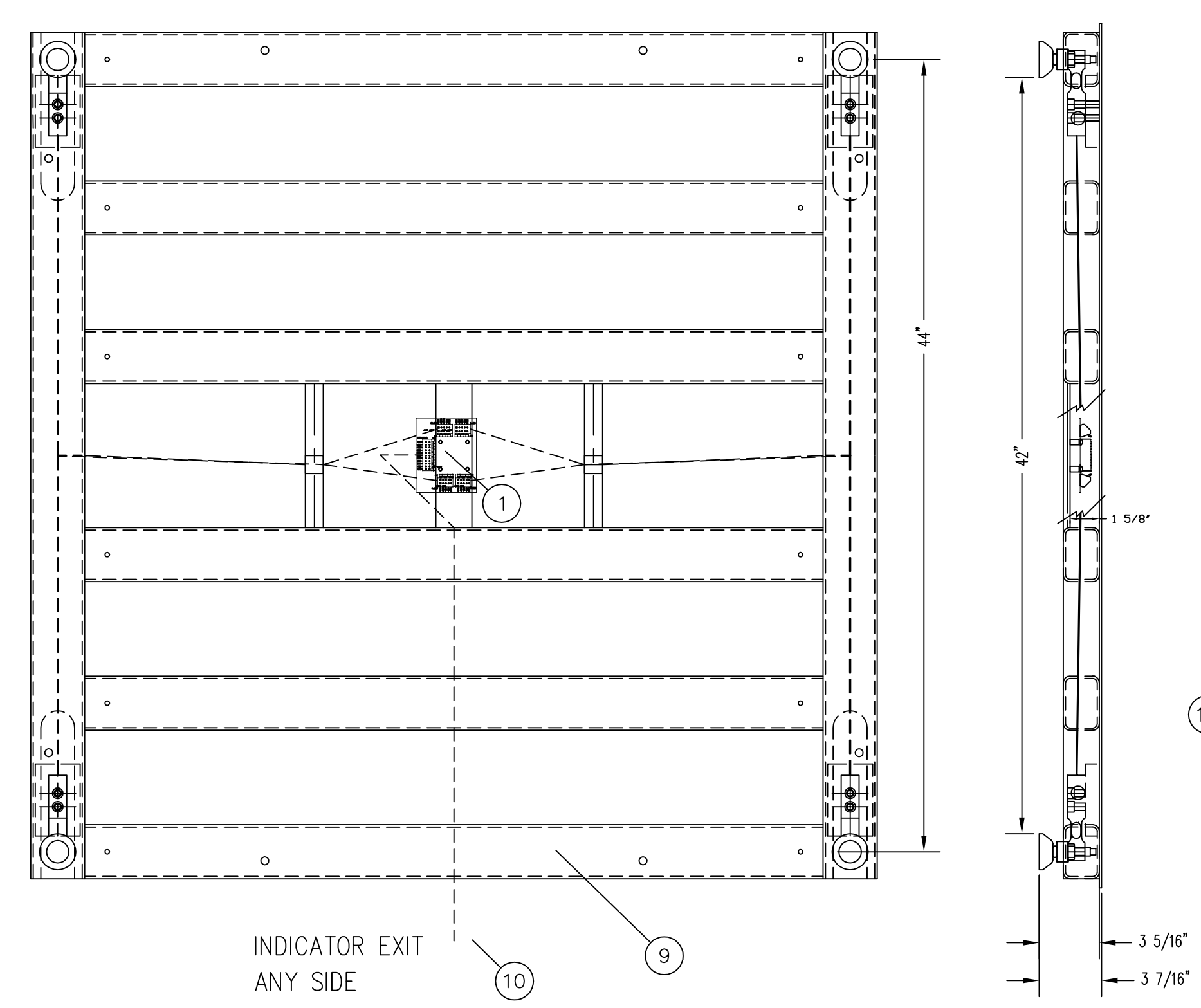
QTY.	QTY.	QTY.	QTY.	ITEM	PART/DWG. NUMBER	DESCRIPTION	MATERIAL OR SOURCE	WT. EACH
1	-	-	17	1914-0025-28	COVER PLATE	HANDRAIL 4' SIDE		60.0
-	1	-	17	1914-0025-18	COVER PLATE	HANDRAIL 3' SIDE		60.0
14	14	14	16	6021-1224	SCW FLAT HEAD	#12-24 x 3/4 S.S.		.01
16	16	16	15	6021-1002	SCW HEX HD	#10-32 x 1/2" S.S.		.01
2	2	-	14	6024-0019	WASHER FLAT	3/8" S.S.		.01
2	2	-	13	6024-0046	WASHER LOCK	3/8" S.S.		.01
2	2	-	12	6007-0041	BOLT HEX HD	3/8-16 x 1" S.S.		.04
1	1	-	11	1934-B110-0A	HANDRAIL ASSY			8.7
1	1	1	10	1914-0033-0A	LOAD CELL CABLE			1.0
1	1	1	9	1914-0015-0A	WEIGHBRIDGE	48" x 36"		111.5
REF	REF	REF	8	LFB-500HT	LOAD CELL			1.5
1	1	1	7	1913-C147-0A	TRIM RING	S.S.		7.6
-	-	-	6	1914-0025-08	COVER PLATE	S.S. NO HANDRAIL		60.0
1	1	1	5	1934-B072-0A	I.D. MARKING			0.1
1	1	1	4	1914-0021-0A	PIT STEEL ASSY.			71.6
REF	REF	REF	3	1930-B363-0A	F.H. FOOT ASSY.	2" DIA.		0.9
REF	REF	REF	2	6021-2064	S.H. CAP SCREW	3/8-24 UNF-2A x 1 1/4"		0.5
REF	REF	REF	1	1914-0009-0A	JUNCTION BOARD			2.0

QTY.	QTY.	QTY.	QTY.	ITEM	PART/DWG. NUMBER	DESCRIPTION	MATERIAL OR SOURCE	WT. EACH
260	260	251	WT.	PARTS/MATERIAL LIST				
UNLESS OTHERWISE SPECIFIED TOLERANCE ON DIMENSIONS ARE:								
ANGLES ± 1/2"								
INTEGERS/FRACTIONS ± 1/16 IN.								
DECIMALS (.X) ± .03 IN.								
DECIMALS (.XX) ± .01 IN.								
DECIMALS (.XXX) ± .005 IN.								
NOTE: WHOLE NUMBERS MUST BE WRITTEN XX,000 TO INVOKE DECIMAL TOLERANCES.								
THIS DRAWING IS THE PROPERTY OF THE CARDINAL SCALE MFG. CO. AND SHALL NOT BE USED NOR REPRODUCED EITHER WHOLLY OR IN PART EXCEPT WITH WRITTEN AUTHORIZATION. ALL RIGHTS OF DESIGN OR INVENTION ARE RESERVED.								
			Cardinal CARDINAL DETECTO FULLER WEIGHING SYSTEMS WEIBAU CITY, MISSOURI 64170					
TITLE FINAL ASSY. (ID-4836S-) W/S.S. COVER AND S.S. TRIM RING								
SCALE NTS			DO NOT SCALE DRAWING			NEXT ASSEMBLY		
DR. GPL		DATE 1/10/17						
CH.		DATE						
MODEL ID-4836S-XXXX		SHEET 1 OF 1		DWG. NO. 1914-0015-1A		REV. A		

REVISION RECORD			
LTR	DESCRIPTION	DATE	BY
A	RELEASED FOR PRODUCTION	12/27/16	28040 GPL



SECTION A-A

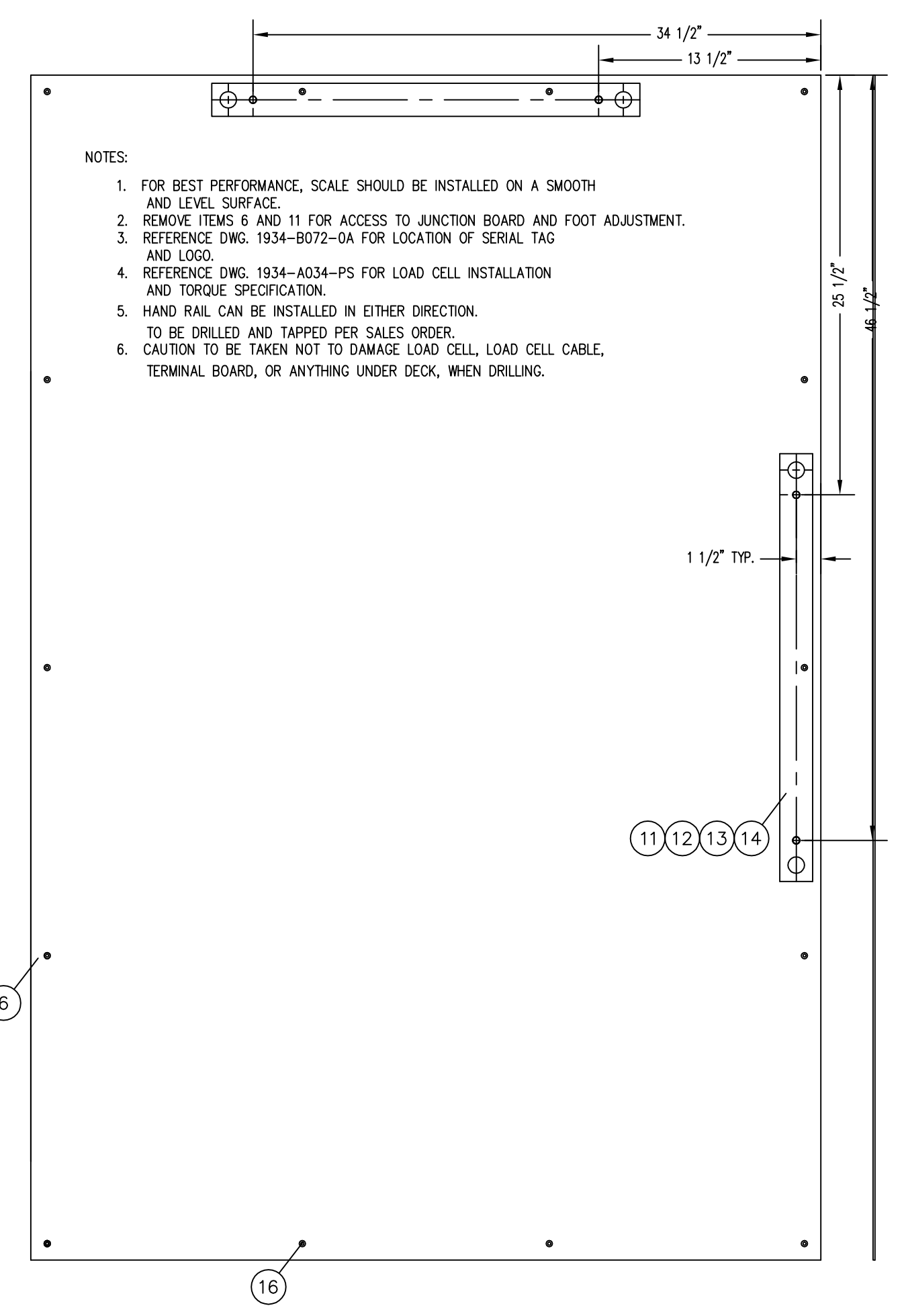
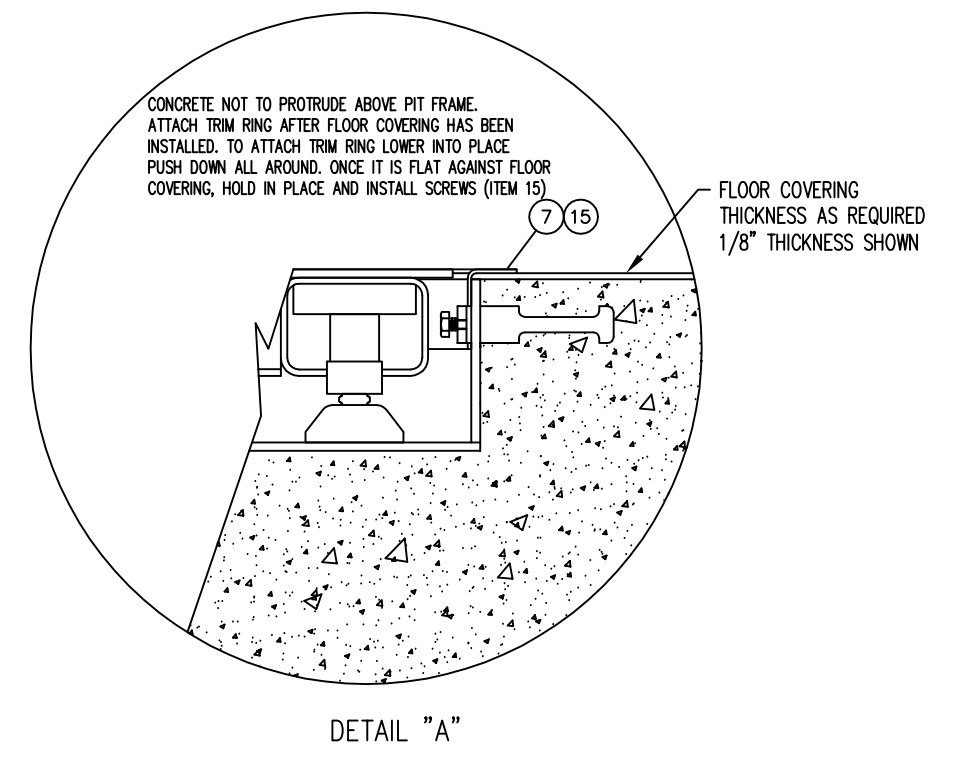
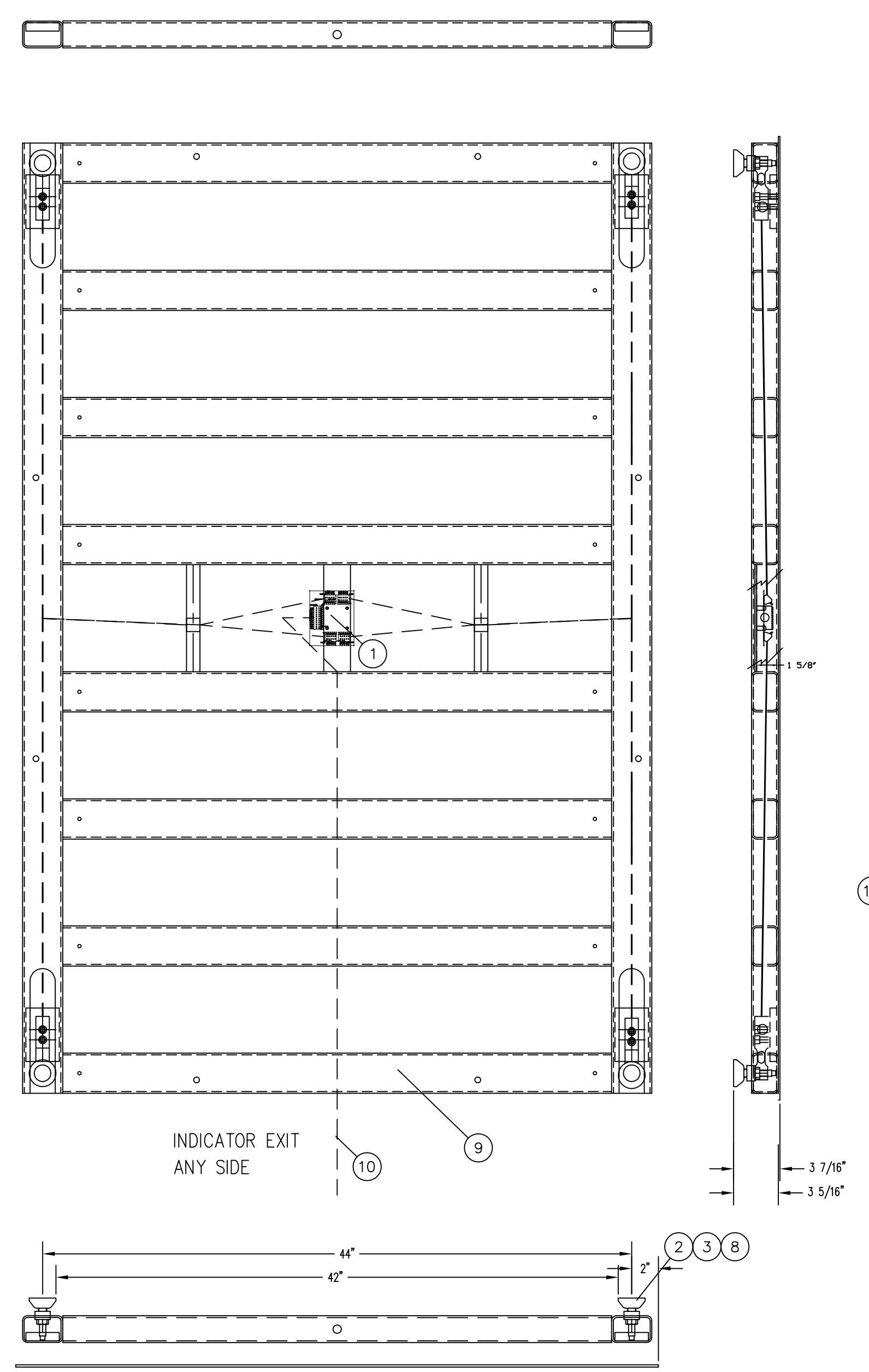
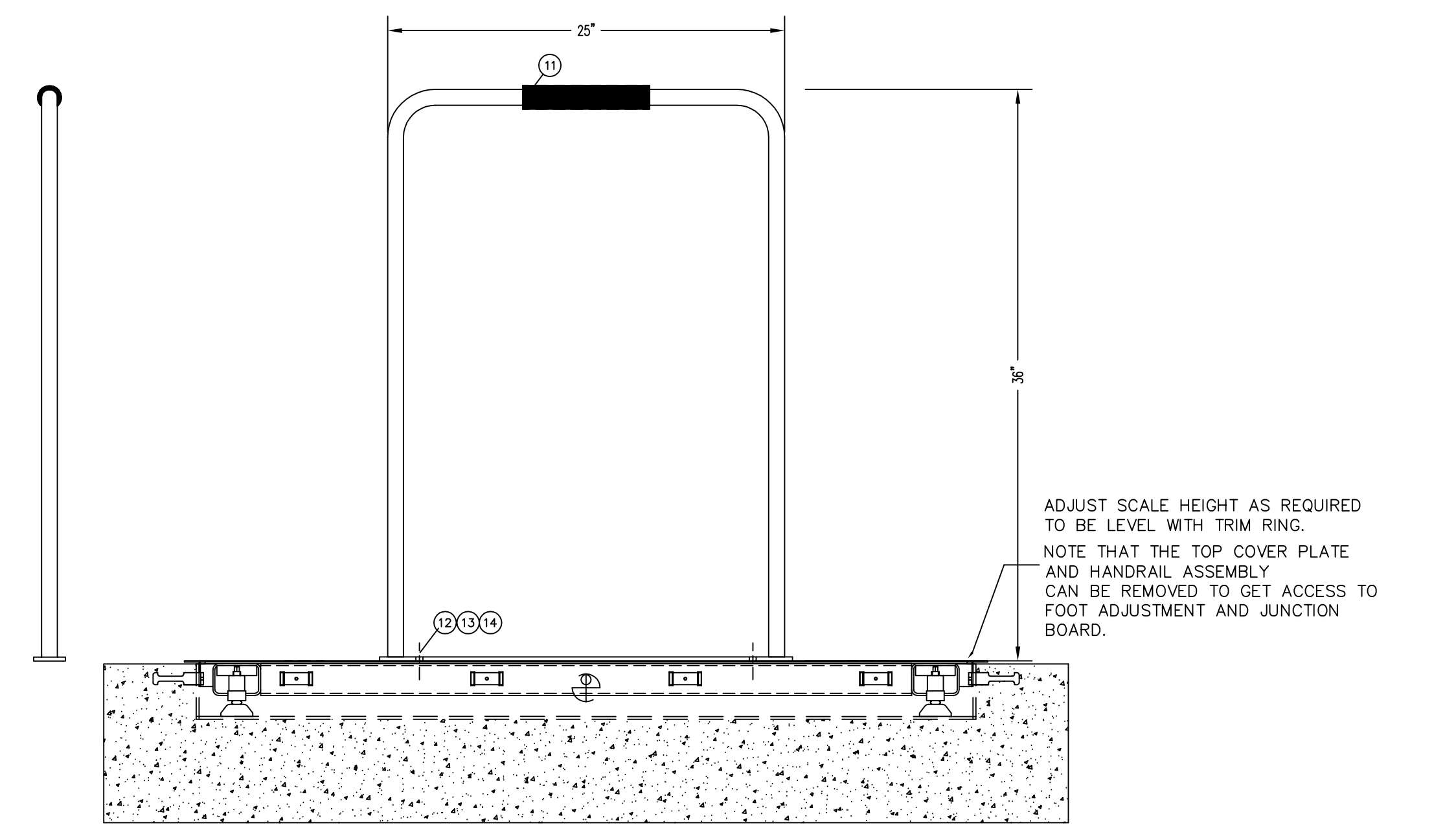
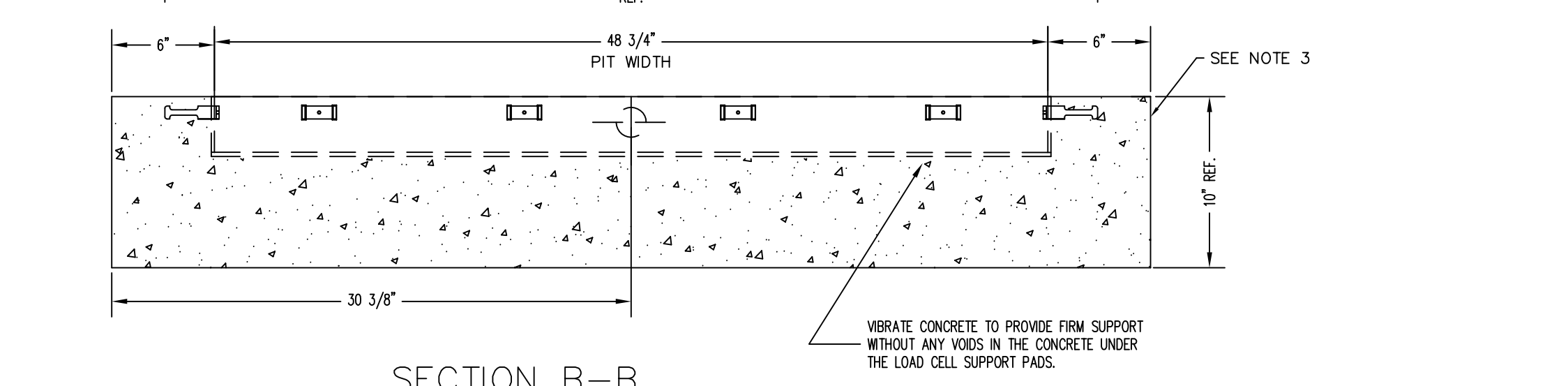
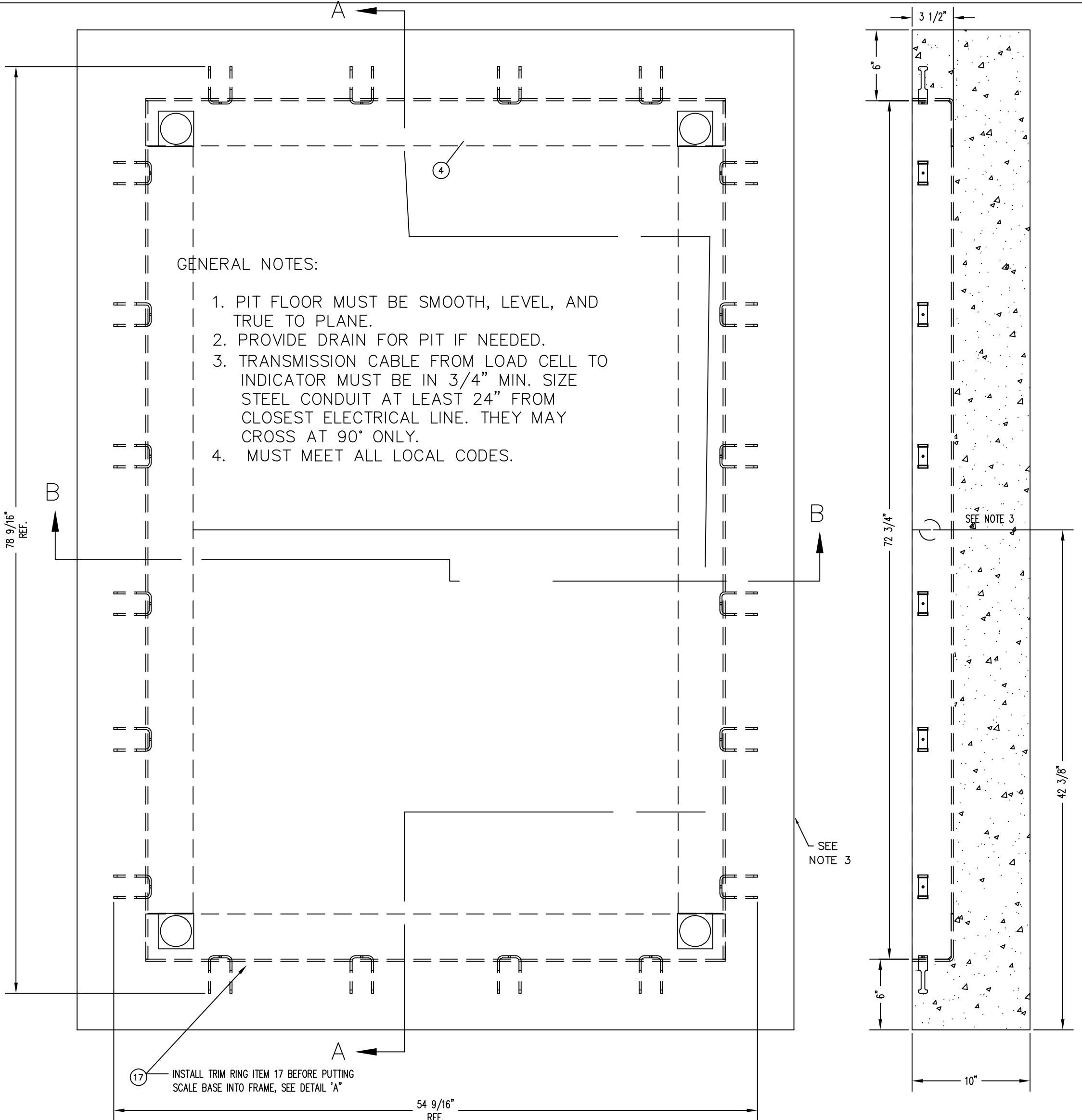


- NOTES:
- FOR BEST PERFORMANCE, SCALE SHOULD BE INSTALLED ON A SMOOTH AND LEVEL SURFACE.
 - REMOVE ITEMS 6 AND 11 FOR ACCESS TO JUNCTION BOARD AND FOOT ADJUSTMENT.
 - REFERENCE DWG. 1934-B072-0A FOR LOCATION OF SERIAL TAG AND LOGO.
 - REFERENCE DWG. 1934-A034-PS FOR LOAD CELL INSTALLATION AND TORQUE SPECIFICATION.
 - HAND RAIL CAN BE INSTALLED IN EITHER DIRECTION. TO BE DRILLED AND TAPPED PER SALES ORDER.
 - CAUTION TO BE TAKEN NOT TO DAMAGE LOAD CELL, LOAD CELL CABLE, TERMINAL BOARD, OR ANYTHING UNDER DECK, WHEN DRILLING.

QTY.	QTY.	QTY.	ITEM	PART/DWG. NUMBER	DESCRIPTION	MATERIAL OR SOURCE	WT. EACH
1	-	17	1914-0036-18	COVER PLATE	HANDRAIL 4' SIDE		80.0
14	14	16	6021-1224	SCW FLAT HEAD	#12-24 x 3/4 S.S.		.01
16	16	15	6021-1002	SCW HEX HD	#10-32 x 1/2" S.S.		.01
2	-	14	6024-0019	WASHER FLAT	3/8" S.S.		.01
2	-	13	6024-0046	WASHER LOCK	3/8" S.S.		.01
2	-	12	6007-0041	BOLT HEX HD	3/8-16 x 1" S.S.		.04
1	-	11	1934-B110-0A	HANDRAIL ASSY			8.7
1	1	10	1914-0033-0A	LOAD CELL CABLE			1.0
1	1	9	1914-0038-0A	WEIGHBRIDGE	48" x 48"		118.6
REF	REF	8	LFB-500HMT	LOAD CELL			1.5
1	1	7	1914-0037-0A	TRIM RING	S.S.		8.8
-	1	6	1914-0036-08	COVER PLATE	S.S. NO HANDRAIL		80.0
1	1	5	1934-B072-0A	I.D. MARKING			0.1
1	1	4	1914-0035-0A	PIT STEEL ASSY.			81.0
REF	REF	3	1930-B363-0A	F.H. FOOT ASSY.	2" DIA.		0.9
REF	REF	2	6021-2064	S.H. CAP SCREW	3/8-24 UNF-2A x 1 1/4"		0.5
REF	REF	1	1914-0009-0A	JUNCTION BOARD			2.0

QTY.	QTY.	QTY.	ITEM	PART/DWG. NUMBER	DESCRIPTION	MATERIAL OR SOURCE	WT. EACH
308	299	WT.			PARTS/MATERIAL LIST		
UNLESS OTHERWISE SPECIFIED TOLERANCE ON DIMENSIONS ARE: ANGLES ± 1/2" INTEGERS/FRACTIONS ± 1/16 IN. DECIMALS (.X) ± .03 IN. DECIMALS (.XX) ± .01 IN. DECIMALS (.XXX) ± .005 IN. NOTE: WHOLE NUMBERS MUST BE WRITTEN XX,000 TO INVOKE DECIMAL TOLERANCES.							
CARDINAL DETECTO FULLER WEIGHING SYSTEMS TITLE: FINAL ASSY. (ID-4848S-) W/S.S. COVER AND S.S. TRIM RING SCALE NTS DO NOT SCALE NEXT ASSEMBLY DR. GPL DATE 12/27/16 CH. DATE MODEL ID-4848S-XXXX SHEET 1 OF 1 DWG. NO. 1914-0034-0A REV. A							

REVISION RECORD			
LTR	DESCRIPTION	DATE	BY
A	RELEASED FOR PRODUCTION	3/3/16	27679 GPL



QTY.	QTY.	QTY.	ITEM	PART/DWG. NUMBER	DESCRIPTION	MATERIAL OR SOURCE	WT. EACH
1	-	-	18	1914-0007-28	COVER PLATE	HANDRAIL 6" SIDE	120.0
-	1	-	17	1914-0007-18	COVER PLATE	HANDRAIL 4" SIDE	120.0
14	14	14	16	6021-1224	SCW FLAT HEAD	#12-24 x 3/4 S.S.	.01
16	16	16	15	6021-1002	SCW HEX HD	#10-32 x 1/2" S.S.	.01
2	2	-	14	6024-0019	WASHER FLAT	3/8" S.S.	.01
2	2	-	13	6024-0046	WASHER LOCK	3/8" S.S.	.01
2	2	-	12	6007-0041	BOLT HEX HD	3/8-16 x 1" S.S.	.04
1	1	-	11	1934-B110-0A	HANDRAIL ASSY		8.7
1	1	1	10	1914-0033-0A	LOAD CELL CABLE		1.0
1	1	1	9	1914-0001-0A	WEIGHBRIDGE	72" x 48"	160.6
REF	REF	REF	8	LFB-500HMT	LOAD CELL		1.5
1	1	1	7	1914-0043-0A	TRIM RING	S.S.	10.8
-	-	1	6	1914-0007-08	COVER PLATE	S.S. NO HANDRAIL	120.0
1	1	1	5	1934-B072-0A	I.D. MARKING		0.1
1	1	1	4	1914-0041-0A	PIT STEEL ASSY.		96.0
REF	REF	REF	3	1930-B363-0A	F.H. FOOT ASSY.	2" DIA.	0.9
REF	REF	REF	2	6021-2064	S.H. CAP SCREW	3/8-24 UNF-2A x 1 1/4"	0.5
REF	REF	REF	1	1914-0009-0A	JUNCTION BOARD		2.0
QTY.	QTY.	QTY.	ITEM	PART/DWG. NUMBER	DESCRIPTION	MATERIAL OR SOURCE	WT. EACH
-2A	-1A		ASSY				

UNLESS OTHERWISE SPECIFIED TOLERANCE ON DIMENSIONS ARE:

ANGLES ± 1/2"

INTEGERS/FRACTIONS ± 1/16 IN.

DECIMALS (.X) ± .03 IN.

DECIMALS (.XX) ± .01 IN.

DECIMALS (.XXX) ± .005 IN.

NOTE: WHOLE NUMBERS MUST BE WRITTEN XX.000 TO INVOKE DECIMAL TOLERANCES.

THIS DRAWING IS THE PROPERTY OF THE CARDINAL SCALE MFG. CO. AND SHALL NOT BE USED NOR REPRODUCED EITHER WHOLLY OR IN PART EXCEPT WITH WRITTEN AUTHORIZATION. ALL RIGHTS OF DESIGN OR INVENTION ARE RESERVED.

Cardinal
Cardinal Scale Manufacturing Co.
WEBB CITY, MISSOURI 64470

CARDINAL DETECTO FULLER WEIGHING SYSTEMS

TITLE: FINAL ASSY. (ID-7248S-) W/S.S. COVER AND S.S. TRIM RING

SCALE: NTS DO NOT SCALE DRAWING

DR. DATE: 2/23/16

CH. DATE:

MODEL: ID-7248S-XXXX

SHEET: 1 OF 1

DWG. NO.: 1913-0001-1A

REV.: A