



Instructions for Use

CamLoc Clamp

800-0271

800-0271-L

800-0271-DEN

800-0271-EU

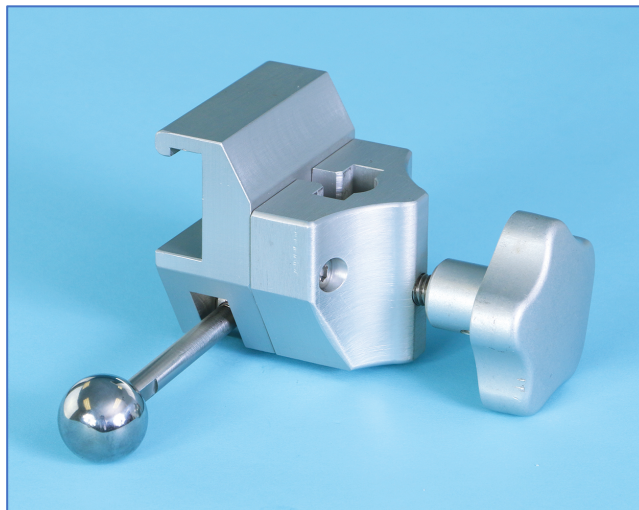
800-0271-JPN

800-0271-SWISS

800-0271-UK

Copyright Notice

All rights reserved. Any duplication, adaption or translation without prior written consent is prohibited unless otherwise provided in relevant copyright laws.



Initial Release: 7/31/2012



Manufacturer
SchureMed (081001460)



Authorized Representative
Emergo Europe, Prinsessegracht 20, 2514 AP The Hague, The Netherlands


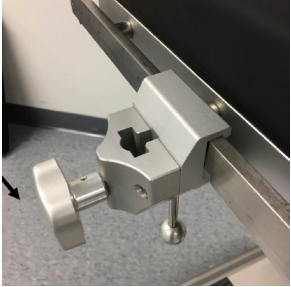
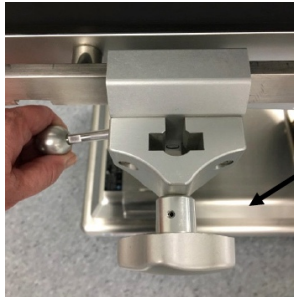

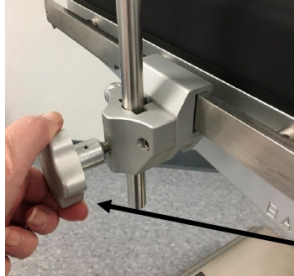
GENERAL INFORMATION

- Choose Standard clamp (800-0271) to use with 1-2 drapes or Large clamp (800-0271-L) to use 3-5 drapes
- Product not made with Natural Rubber Latex
- Device supports 500 lb. (227 kg) proportional patient load (6'4" (193 cm) tall patient per 99% human body model)
- Product warranty covers product from manufacturing defects for period of 2 years
- If damaged in shipping, call Customer Service at (888) 724-8763 or (781) 982-7000 to obtain Return Material Authorization number. For product warranty issues, contact Customer Service.
- Product is maintenance-free, check product condition before next use
- Life of device is 5 years under normal use
- Store device between -4°F to $+86^{\circ}\text{F}$ (-20°C to 30°C)

INTENDED USE

Intended use for CamLoc Clamp is to hold accessories to surgical table.

INSTRUCTIONS

	<p>Step 1. <i>Place clamp onto rail (as shown).</i></p> <p>CamLoc locks to rail from the bottom. Clamp cannot be attached where there is a notch on side rail—it will not be secured or locked.</p>	
	<p>Step 2. <i>Lock clamp by turning stainless steel ball clockwise or counterclockwise (as shown).</i></p>	
	<p>Step 3. <i>Inset accessory (as shown).</i></p>	
	<p>Step 4. <i>Lock accessory by turning star knob to clockwise (as shown).</i></p>	

GENERAL SPECIFICATIONS

Device Dimensions (maximum)

- *Length: 4.75" +/- 0.5" (12 cm +/- 1 cm)*
- *Width: 5" +/- 0.5" (13 cm +/- 1 cm)*
- *Depth: 2.25" +/- 0.5" (6 cm +/- 1 cm)*
- *Device Weight: 2 +/- 0.5 lbs. (.9 kg +/- .22 kg)*

- *Attaches to rail of surgical table at any point on rail*
- *Single-person installation*

COMPONENT OVERVIEW

CamLoc Clamp is a surgical table clamp that attaches to side rails of any table.

See side rail dimensions below:

US: 0.374" x 1.122" (9.5 mm x 28.5 mm) PN# 800-0271

Denyer: 0.236" x 1.496" (6 mm x 38 mm) PN# 800-0271-DEN

Europe: 0.394" x 0.984" (10 mm x 25 mm) PN# 800-0271-EU

Eschmann (UK): 0.236" x 1.260" (6 mm x 32 mm) PN# 800-0271-UK

Japan: 0.354" x 1.260" (9 mm x 32 mm) PN# 800-0271-JPN

Swiss: 0.394" x 1.181" (10 mm x 30 mm) PN# 800-0271-SWISS

DISPOSAL

- **General** - *Prevent infection by cleaning and disinfecting product before disposal*
- **Packaging** - *Dispose packaging material via household waste according to national requirements*
- *SchureMed accepts back used or retired products - or dispose of product in accordance with national requirements*



Product Use Warnings

WARNING!

Maximum load should not exceed appropriate proportion of a patient weighing 500 lbs. (227 kg). Use care with low-maximum load capacity surgical tables that accessory rails are not overloaded. Strictly follow Instructions for Use for your surgical table system.

CLEANING INSTRUCTIONS

Clean CamLoc Clamp thoroughly before using & sterilization and after each use

- *Recommended cleaning products: (All solutions should be used in accordance with manufacturer's instructions)*
 - *Enzymatic neutral pH detergent solution*
 - *(Enzymatic cleaners are compatible with metal devices/instruments and are preferred)*
 - *Non-enzyme, hydrogen peroxide based solution*
 - *Coverage Plus NPD One Step Cleaner, Disinfectant & Deodorizer Concentrate*

HAND CLEANING

- *Scrub each piece with a soft, plastic scrub brush and a recommended cleaning solution (see above)*
- *Rinse all parts thoroughly to remove any chemical residue*
- *Wipe each part completely dry with a clean, lint-free cloth*

WASHER CLEANING

- *Put through washer/decontaminator according to manufacturer's instruction (Select cycle that does not include lubrication)*
- *Prepare for sterilization (device must be cleaned before sterilization)*
- *See sterilization instructions below*

**Based on information provided by the Healthcare Infection Control Practices Advisory Committee (HICPAC), the Center for Disease Control (CDC), the National Center for Biotechnology Information (NCBI) and the U.S. National Library of Medicine.*

STEAM STERILIZATION

Wrap using envelope method or accepted wrap method at your facility.

Pre-Vacuum

Wrapped Instruments

Exposure Time at 132°C (270°F): 4 minutes

Drying Time: 40 minutes



Symbol Explanation



Date of Manufacture



Conformity Mark



Manufacturer



Batch Code/Serial Number



Authorized Representative
in European Community

IFU-800-0271 REV 3.02