



Accommodates
BARIATRIC Patients

SURGICAL C-ARM TABLE 840

The ideal choice for vascular and endoscopic procedures.



FEATURES

- Free-Float Tabletop – With specially-designed SmoothGlide™ movement
- Carbon-Fiber Tabletop – 0.7 mm attenuation (1.2 mm with pad)
- Choice of contoured or rectangular design. Contoured tabletop features a face cutout for comfortable prone positioning.
- Tabletop Motion – Expansive head-to-toe, 35"
- Radiolucent Area – Extra-large, 75"
- Isocentric Lateral Roll Motion – Maintains image center during tabletop movement, minimizing image distortion
- High-Speed Actuators – Ensure quick tabletop positioning, height adjustability, isocentric lateral roll and Trendelenburg motions
- Mushroom-Shaped Control – Ergonomic, for free-float motion
- Table Base – Encased in stainless steel, easy to clean
- Hand and Foot-Operated Controllers – Ensure quick and safe tabletop positioning
- Patient Capacity – 500 lb
- Low Profile Base – For unrestricted C-Arm movement
- Accessory Rails
- AC and Battery Power – Standard



The ergonomic mushroom-shaped control grip optimizes command of the SmoothGlide free-float tabletop. When employing any degree of tilt or roll, X and Y positions are "locked" to prevent gravity-induced movement.

DESCRIPTION

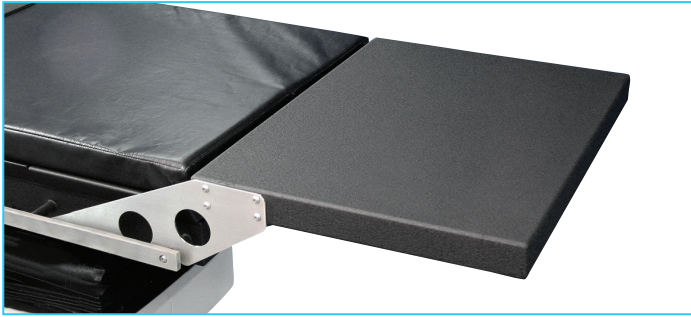
Advanced low attenuation float top for cardiovascular, endoscopic and pain management procedures, the Surgical C-Arm Table 840 is the ideal choice when stability, access, and precise, quiet, vibration-free positioning are essential. A cantilevered low attenuation carbon-fiber tabletop, with choice of rectangular or contoured design, accommodates portable or ceiling-suspended C-Arms.

The extra-large, 75" radiolucent area, free-float X-Y tabletop, motorized control of height, isocentric lateral roll, Trendelenburg motions and the catheter tray extension make the Surgical C-Arm Table 840 ideal for cardiovascular and interventional radiology applications. The radiolucent area is free of cross members, allowing full fluoroscopic visualization and unobstructed C-Arm positioning. Functional design provides complete access with reduced radiation exposure to clinicians. Patient comfort and stability are assured by two-inch thick table padding and three adjustable straps with hook and loop fastening.

Control Made Easy

The portable hand-held and foot-operated controllers ensure quick and safe tabletop positioning, and can be positioned from any point around the table. Both controllers offer the freedom to adjust height, lateral roll and Trendelenburg motions. The hand-held controller provides the back-to-level function. The foot-operated controller also releases the tabletop for X-Y positioning and is ideal when hands are busy with other functions.

Surgical C-Arm Table 840



Catheter Tray Extension - This removable extension provides additional table length to accommodate catheters within the patient's sterile field. This feature makes the procedure easier, safer and reduces the risk of breaking the sterility of the catheters. (Extension is not radiolucent and not suitable for patient support.)



Isocentric Lateral Roll minimizes patient and C-Arm repositioning.

SPECIFICATIONS

Dimensions:

- Overall: 97" l x 26" w (246 x 66 cm) with OR accessory rails
- Tabletop: 97" l x 24" w (246 x 61 cm) – choice of classic contoured or rectangular design
- Catheter Tray Extension (removable): 18" l x 24" w (45.7 x 61 cm) non-radiolucent
- Radiolucent Area: 75" l x 24" w (191 x 61 cm)
- Tabletop Material: Carbon fiber with integral head section
- Mattress: Seamless, 2" thick (5 cm)
- Attenuation: 1.2 mm Aluminum equivalence

Motions

- Height Adjustable: 33.5" to 43.5" (84 to 109 cm)
- Tabletop X Motion (head-to-toe float): 35" (88.9 cm)
- Tabletop Y Motion (side-to-side float): 10" (25.4 cm)
- Trendelenburg: 0° to 20°
- Reverse Trendelenburg: 0° to 20°
- Isocentric Lateral Roll: 0° to ±15°

Controls:

- Hand Control: activates height, isocentric lateral roll and Trendelenburg motions
- Foot Control: activates all motions (has release for float)
- Mushroom-Top Control: releases X-Y Tabletop motions
- Accessory Rails: Standard OR accessory rails 49.5" x 1.12" x .375" (124 x 2.86 x .95 cm) mounted near foot end of table
- Patient Restraints: Three body straps
- Finish: Stainless Steel
- Patient Capacity: 500 lb (227 kg)
- Weight: 641 lb (291 kg)
- Shipping Weight: 865 lb (392 kg)

- Warranty: Two years parts and labor
- Certifications: ANSI/AAMI ES60601-1:2005 +C1 (2009) +A1 (2012) +A2 (2010); CAN/CSA C22.2 No: 60601-1:14; CAN/CSA-C22.2 NO.60601-2-46:12; IEC 60601-1-2-46:2016.
- CDRH registered and FDA Device Listed

ORDERING INFORMATION

058-840	Table, Surgical C-Arm, Contour, 115 V
058-840-10	Table, Surgical C-Arm, Rectangle, 115 V
058-845	Table, Surgical C-Arm, Contour, 230 V
058-845-10	Table, Surgical C-Arm, Rectangle, 230 V

Optional:

056-866	Arm Board, Carbon Fiber, two arms
056-865	Arm Board, Carbon Fiber, one arm
056-863	Arm Board, Dura Board with pad (pair)
056-850	IV Pole, Rail Mounted
058-849	Clamp, Accessory, C-Arm Table
058-856	Radiation Shield, Head/Cervical Fits Surgical C-Arm Tables 840, 846 and 870
058-857	Radiation Shield, Thoracic/AB Fits Biomed™ Surgical C-Arm Tables
056-862	Battery and Charging Unit, 115 VAC
056-863	Battery and Charging Unit, 230 VAC
056-802	Bellows Skirt, disposable plastic, 250/roll
046-275	Dispenser, Disposable Protective Roll For 056-802 Bellows Skirt. Wall mounted.
042-580	Barrier, Clear-Lead, Standard Window Window size 30" w x 22" h (76 x 56 cm)
042-582	Barrier, Clear-Lead, Full Window Window size 30" w x 46" h (76 x 116.8 cm)
042-583	Barrier, Mobile, Clear-Lead, Hourglass Window For ionizing radiation, 0.5 mm LE Window size 24" w x 48" h (61 x 122 cm)



BIO-229 - 07/2021

Copyright © 2021 Mirion Technologies, Inc. or its affiliates. All rights reserved. Mirion, the Mirion logo, and other trade names of Mirion products listed herein are registered trademarks or trademarks of Mirion Technologies, Inc. or its affiliates in the United States and other countries. Third party trademarks mentioned are the property of their respective owners.

BIODEX
Part of Mirion Technologies