

# SCHURELOC XPS

## UNIVERSAL LIMB HOLDER

#800-0280



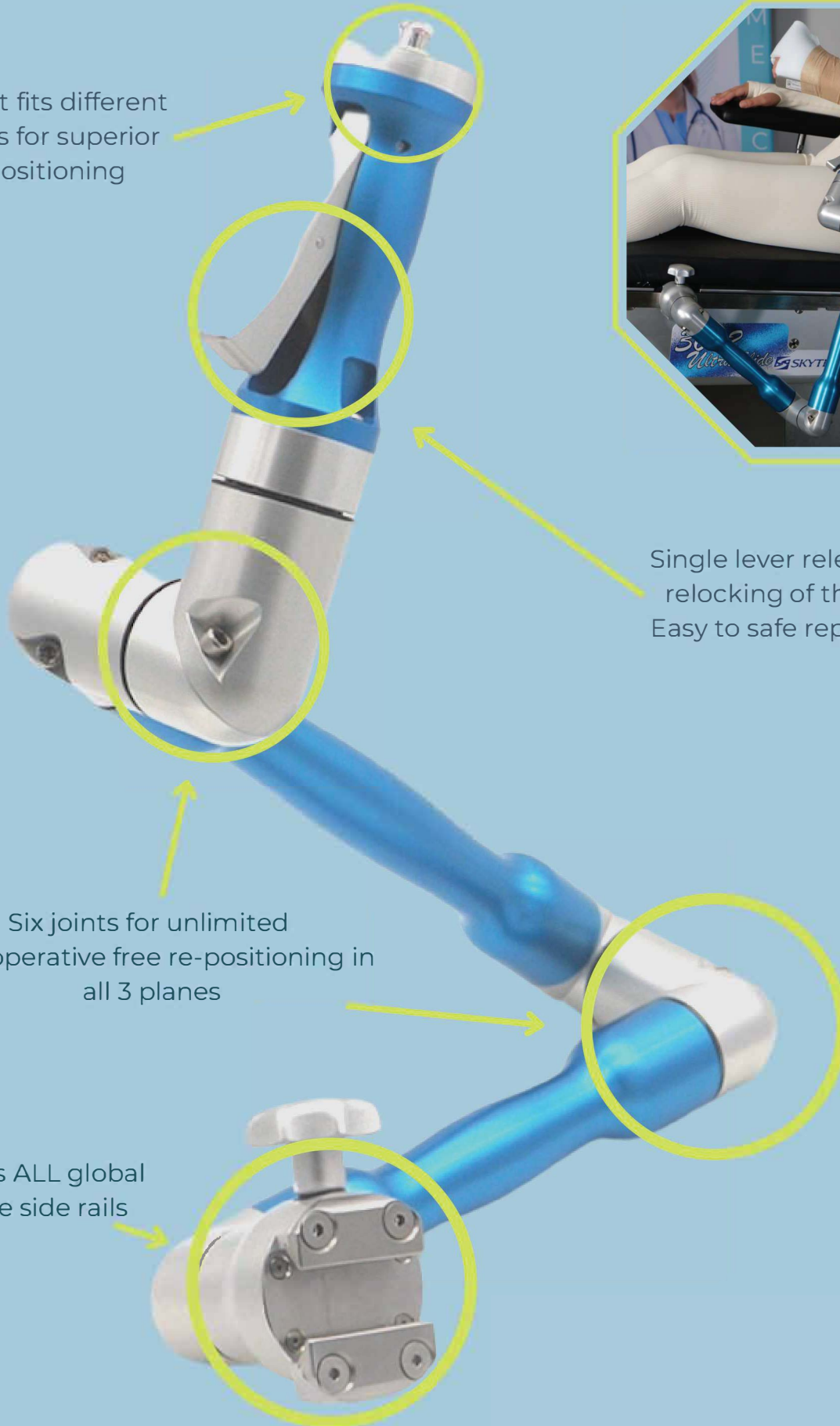
Adapter joint fits different limb holders for superior patient positioning



Single lever releasing and relocking of the device:  
Easy to safe repositioning

Six joints for unlimited interoperative free re-positioning in all 3 planes

Clamp fits ALL global OR table side rails



# SCHURELOC XPS & ACCESSORIES



**Give your surgeons a third arm in the operating room with the SchureLoc XPS lightweight mechanical robot arm.**

Schure Loc™ XPS provides rigid fixation as well as unlimited intraoperative range of motion for shoulder arthroscopy, rotator cuff and total shoulder replacement surgical procedures, and requires no additional power or air connections.

## Features

- ◆ With no foot pedals, hoses, hydraulics or power cords around the operating room table, Schure Loc™ XPS combines strength and flexibility when intra-operatively adjusting the operative limb
- ◆ Single lever releases all six joints for unlimited varied positioning and relocks instantly when released
- ◆ Smooth, effortless positioning enhances operative site exposure
- ◆ Convenient Schure Loc™ Shoulder Kit includes a sterile drape, foam hand/forearm holder and self-adherent wrap
- ◆ Schure Loc™ XPS attaches easily to any side rail



### Disposable SchureLoc XPS Sterile Kit, 10/cs

Each SchureLoc XPS comes with one complimentary Sterile Kit. The SchureLoc XPS Sterile Kit includes Sterile Forearm Wraps, Sterile Self-Adherent Coban, and Sterile Drapes that fit the whole arm.

**#800-0281**

### Schure Loc XPS Adapter

The Schure Loc Adapter is used with the Schure Loc XPS to secure limb positioning devices including the Forearm Attachment, Armboard, Counter Traction Post, TKR Positioner and Elbow/Ankle Positioner.

**#790-0039**

### Schure Loc XPS Armboard

Versatile and comfortable patient positioning for surgical procedures in seated, lateral, prone, neuro and park bench positions. New ball socket locking system for every patient size and position.

**#790-0056**

### Schure Loc XPS Forearm Attachment

The Schure Loc™ Forearm Attachment is used to wrap the patient's forearm to the Schure Loc™ XPS for shoulder surgery.

**#790-0040**

### Schure Loc XPS TKR Positioner

The TKR Positioner accessory for the Schure Loc XPS is designed to be used for total knee replacements. The Schure Loc connection at the heel of the leg holder places the operative leg in extension, flexion, tilt and rotation. Easy-to-use and completely rigid once locked.

**#790-0077**

### Schure Loc XPS Traction Post

The Schure Loc™ XPS Counter Traction Post is a limb supportive device that is used in conjunction with the Schure Loc™ XPS for knee and elbow surgeries.

**#790-0057**

### Schure Loc XPS Elbow/Ankle Positioner

Operating room staff can quickly position surgical devices anywhere along standard operating room table side rails.

Use the Schure Socket to halt all movement on mounting posts as well.

**#790-0075**

