

Health o meter[®]
P r o f e s s i o n a l

Model 2210CART Professional Medical Cart



*color of cart may vary



PELSTAR, LLC 9500 West 55th St. McCook, IL 60525-7110 USA www.homscases.com

Health o meter[®] Professional 2210CART

© Pelstar, LLC 2020

weigh**easier**[®]

Thank you for your purchase of this Health o meter® Professional product. Please read this manual carefully, and keep it for easy reference or training.

TABLE OF CONTENTS

Cautions and Warnings3
Specifications3
Certifications3
Assembly Instructions 2210CART4
Transportation / Operating Instructions7
Maintenance.....7
Warranty.....8

Please register your 2210CART for warranty coverage at:
www.homscales.com/product-support/technical-support/product-warranty-registration

For User Instructions updates and revisions please go to:
www.homscales.com

CAUTIONS AND WARNINGS

To prevent patient/caregiver injury, please follow the instructions in this user manual very carefully.

- Do not exceed recommended weight limit of 200 lb / 90 kg for this cart.
- Do not use in the presence of flammable or explosive materials.
- Lock wheel casters when in storage or during a weighing event.
- If the cart becomes damaged, do not operate cart until properly serviced.
- Follow instructions and exercise caution during assembly.

Patient/caregiver safety

- Never transport a patient on the 2210CART.
- To prevent patient injury, the patient must be attended throughout the entire weighing event.

In no event shall Pelstar, LLC be liable for damages or injuries whatsoever arising out of or connected with the assembly, use, or misuse of its products.

SPECIFICATIONS



Intended Use

The 2210CART professional medical cart is intended for use in a professional medical setting to transport pediatric tray scales or other medical devices and supplies. It is not intended for patient transfer. The 2210CART employs a proven and rugged mechanical design with non-conductive casters, two casters with locks, built-in handles, and a lockable cabinet. It features a top shelf, providing a stable, flat, and level surface area for repeatable weight measurements. The 2210CART is specifically designed for use with Health o meter Professional pediatric scales 549KL, 553KL, and 2210KL, 2210KL4.

2210CART Specifications

Capacity:	Per Shelf: 70 pounds Cart Total: 200 lb (90 kg)	
Physical Dimensions:	Cart (Overall Dimensions) Width: 26 1/2" (673 mm) Depth: 18" (457 mm) Height: 34 1/8" (867 mm) Weight: 36 lb (16.50 kg)	Lockable cabinet (Dimensions) Width: 23" (584 mm) Depth: 16 3/4" (425 mm) Height: 17" (432 mm)

CERTIFICATIONS

 	Pelstar, LLC has been officially certified as the manufacturer of Health o meter® Professional medical devices. The Pelstar, LLC quality assurance system covers the development, production, sales and service of medical scales and measuring systems.
--	--

2210CART ASSEMBLY INSTRUCTIONS

Before Assembly

Each 2210CART professional medical cart is shipped disassembled in two boxes packaged in one outer carton. Carefully inspect the carton for shipping damage before unpacking. If damage is found, contact your shipper or a Health o meter® Professional representative immediately. Claims must be filed with the shipper as soon as possible after receipt of the package. The following information details what you will find inside the main carton as you unpack the cart.

To prevent scratching any components and avoid damaging the cart when unpacking, do not use a box cutter, knife, scissors, or any sharp object to open the protective inner packaging. Carefully remove assembly from the carton and unwrap the packing materials. Set the carton aside for storage.

Parts List

- | | |
|--|--|
| (1) Top shelf with handle | (1) Base Shelf |
| (1) Middle Shelf | (1) Top Shelf |
| (2) 4" swivel casters with locks | (1) Front Door Panel |
| (2) 4" swivel casters | (2) Side Panels |
| (8) Pan head screws | (1) Rear Panel |
| (2) Cabinet door keys (taped onto the cabinet door handle) | (4) Square Legs (14") for bottom shelf |
| (4) Square legs (8") for top shelf | |

Tools Required

Rubber mallet (not included), Phillips screwdriver or power drill (not included)

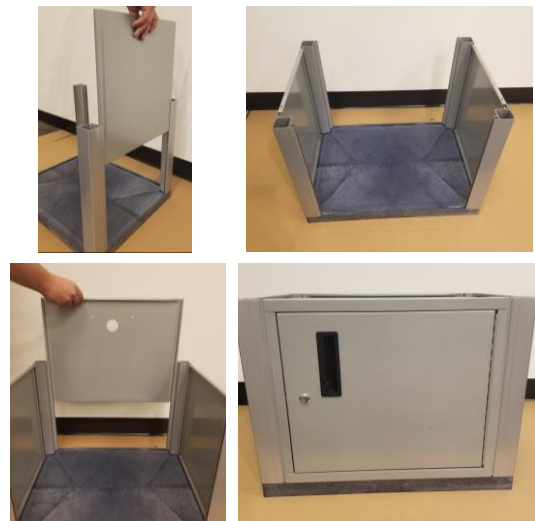
Assembling the 2210CART

BEFORE STARTING ASSEMBLY, REMOVE THE KEYS TAPED INSIDE THE CABINET DOOR AND SET ASIDE

1. Place the base shelf on cardboard face up as shown. Place the four Square Legs (14") onto the bottom shelf mounting posts. Tap gently with mallet until fully seated and ensure the legs are flush with the shelf.



2. Slide the two Side Panels, the Rear Panel, and the Front Door Panel into the Square Legs as shown. Ensure the front door handle is on the left side of the front panel.



2210CART ASSEMBLY INSTRUCTIONS

3. Place the Middle Shelf onto the cabinet and into the Square Legs as shown. Tap gently with mallet until fully seated and ensure the legs are flush with the shelf.



*color of cart may vary

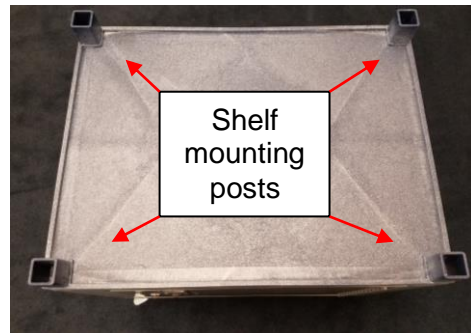
4. Carefully turn over the assembled cabinet. Insert the stems of the two casters with locks into the holes on the front of the cabinet with the door. Push in casters until fully seated. Gently tap with rubber mallet if needed. Lock the two locking casters to aid in further assembly.



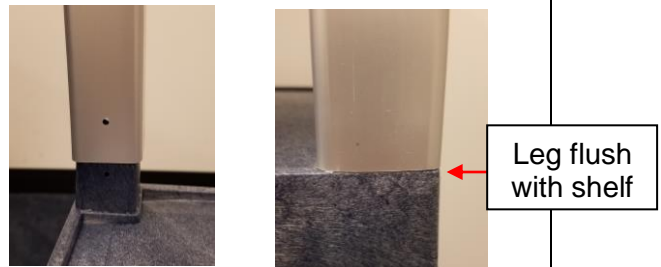
5. Insert the other two casters into the holes on the opposite side. Push in casters until fully seated. Gently tap with rubber mallet if needed. Ensure all four casters are fully seated into the socket as shown.



6. Turn the cart over, upright on all four casters and shelf mounting posts facing up. Ensure cart is level with all four casters fully seated. If needed, tap down on the top surface to completely seat the casters.



7. Place the four square legs onto the shelf mounting posts. Align the holes on the legs with the holes in the posts. Tap gently with mallet until fully seated and ensure the leg is flush with the shelf.



2210CART ASSEMBLY INSTRUCTIONS (CONT)

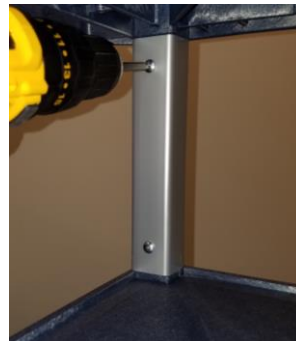
8. Locate four of the pan head screws. For each leg, insert a screw into the hole in the leg and into the post. Tighten fully using a Phillips head screw driver or power drill.



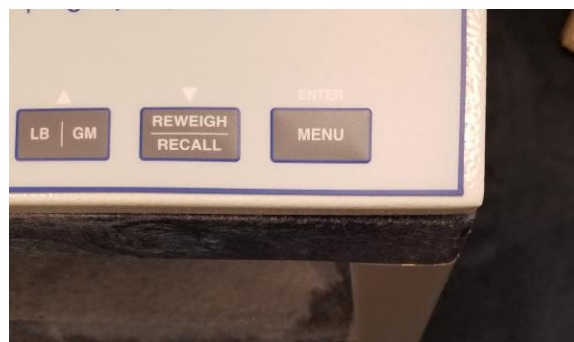
9. Obtain the shelf from the packaging and place onto the 4 legs. Position the shelf with the handle on the same side as the casters with locks. Push shelf down onto the legs as far as you can by hand. Gently tap with mallet if necessary.



10. Obtain the remaining 4 pan head screws and insert into the holes in the top part of the shelf mounting legs. Tighten fully using a Phillips head screw driver or power drill.



11. Position the scale on the top shelf closest to the front and right side. This provides maximum access to the shelf handle and assures the weighing tray does not touch any wall surface which could affect accurate weight measurement.



TRANSPORTATION / OPERATING INSTRUCTIONS

Warning: Never use the cart to transport a pediatric patient.

Caster Locks

To prevent unintended 2210CART movement, caster locks are provided. To engage the caster locks, step on the side of each cam lock lever marked "ON". To disengage the caster locks, step on the side of each cam lock lever marked "OFF".

Lockable cabinet

The 2210CART's lockable cabinet may be used with or without keys. The door has a positive latching action to maintain its closed position even when it is not locked.

MAINTENANCE

Follow the instructions below for maintenance and cleaning of the 2210CART. Maintenance operations other than those described in this manual should be performed by qualified service personnel only.

MAINTENANCE

Before first use and after periods of non-use, check the 2210CART for proper operation. If the cart does not operate correctly, refer to qualified service personnel.

1. Check overall appearance of the cart for any obvious damage or wear.
2. Do not store near chemicals, heaters, or radiators.
3. Periodically inspect 2210CART casters and locks. Remove all foreign material picked up by the casters/locks.

CLEANING

Proper cleaning is essential to ensure safe and effective operation.

1. Clean all external surfaces with a clean damp cloth. Mild antimicrobial or antibacterial soap and water solution may be used. Dry with a clean soft cloth.
2. Do not pour onto or immerse the 2210CART into cleaning or other liquid solutions.
3. Do not use abrasive cleaners.

WARRANTY

1-Year Limited Warranty

What does the Warranty Cover?

This Health o meter® Professional product is warranted from date of purchase against defects of materials or in workmanship for a period of one (1) year. If the product fails to function properly, return the product, freight prepaid and properly packed to Pelstar, LLC (see "To Get Warranty Service", below, for instructions). If the manufacturer determines that a defect of material or in workmanship exists, the customer's sole remedy will be replacement of the product at no charge. Replacement will be made with a new or remanufactured product or component. If the product is no longer available, replacement may be made with a similar product of equal or greater value. All replaced parts are covered only for the original warranty period.

Who is Covered?

The original purchaser of the product must have proof of purchase to receive warranty service. Please save your invoice or receipt. Pelstar dealers or retail stores selling Pelstar products do not have the right to alter, or modify or any way change the terms and conditions of this warranty.

What is Excluded?

Your warranty does not cover normal wear of parts or damage resulting from any of the following: negligent use or misuse of the product, use contrary to the operating instructions, abuse including tampering, damage in transit, or unauthorized repair or alternations. Further, the warranty does not cover natural disasters, such as fire, flood, hurricanes and tornadoes. This warranty gives you specific legal rights, and you may also have other rights that vary from country to country, state to state, province to province or jurisdiction to jurisdiction.

To get Warranty Service make sure you keep your sales receipt or document showing proof of purchase. Call (+1) 800-638-3722 or (+1) 708-377-0600 to receive a return authorization (RA) number, which must be included on the return label. Attach your proof of purchase to your defective product along with your name, address, daytime telephone number and description of the problem. Carefully package the product and send with shipping and insurance prepaid to:

Pelstar, LLC
Attention R/A# _____
Return Department
9500 W. 55th St.
McCook, IL 60525



PELSTAR, LLC

9500 West 55th St. McCook, IL 60525-7110 USA

1-800-638-3722 or 1-708-377-0600

PLEASE REGISTER YOUR SCALE FOR WARRANTY COVERAGE AT:

www.homscales.com

Health o meter® is a registered trademark of Sunbeam Products, Inc. used under license.

Health o meter® Professional products are manufactured, designed, and owned by Pelstar, LLC.

We reserve the right to improve, enhance, or modify Health o meter® Professional product features or specifications without notice.

© Pelstar, LLC 2020