

1. For your safety

The luminaire has been designed in accordance with state-of-the-art standards, manufactured with utmost care using high-quality materials, and tested.

Nevertheless, its use may constitute a risk to persons or cause material damage.



- ▶ Read all enclosed instructions and information.
- ▶ Please observe the warnings included in the documentation and attached to the unit.
- ▶ The device must only be used in technically perfect condition, and only by persons being aware of the risks and dangers involved in operating the device.
- ▶ Keep this document available near the device.

1.1 Designated use

The luminaire with integrated magnifier is intended for the illumination and simultaneous magnification of objects.

The luminaire model SNLQ 54/2 **A** has been especially designed for use in electrostatically protected areas (EPA).

1.2 Safety instructions

Explosion hazard

Operating the luminaire in rooms subject to explosion hazards can trigger an explosion and result in serious injuries or death.

- ▶ **Do not** operate the luminaire in rooms subject to explosion hazards.

Danger due to electric current

Improper use and faulty work on the luminaire may result in injuries and material damage.

- ▶ Compare the mains voltage with the nominal voltage and the frequency specified on the rating plate and make sure that they are identical.
- ▶ Disconnect a damaged connecting cable immediately from the power supply and have it replaced by the manufacturer or by a skilled electrician.
- ▶ Have maintenance and repair work carried out by a trained electrician only.
- ▶ Before performing work on the luminaire, disconnect the luminaire from the power supply.

Risk of fire

When exposed to sunlight, the magnifier can act as a focusing glass and ignite other objects.

- ▶ When the magnifier is not used, cover it with the magnifier cover.

Mounting the luminaire in a stable position

A toppling luminaire can result in personal injuries and material damage.

- ▶ Mount the luminaire in a stable position.

Hazard caused by unsuitable spare parts

Unsuitable spare parts can result in injuries and material damage.

- ▶ Use only spare parts approved by the manufacturer.

Risk of corrosion

Operating the luminaire in moist rooms can result in material damage.

- ▶ Operate in dry rooms only.

1.3 Warning levels

 **DANGER**

Warning against hazards that result **directly in serious injuries or death** in case of non-observance.

 **WARNING**

Warning against hazards that may result in **serious injuries or death** in case of non-observance.

 **CAUTION**

Warning against hazards that may result in **injuries** in case of non-observance.

NOTICE

Warning against hazards that may result in **material damage** in case of non-observance.

2. Model overview

For optimum installation and use of the luminaire, you have to identify the luminaire model. To do so, you will require the model number of the luminaire.

NOTE: The model number can be found on the column of the luminaire.

- ▶ Check which model number the luminaire has.
- ▶ Determine the luminaire model by referring to the following table, see Tab. 1. For an explanation of the functions, see chapter 6 “Functions of the luminaire”, page 21.

Example: The model number **SNLQ 54/2 A** stands for the following luminaire model:

SNLQ	54	2 A
Magnifier luminaire	Key: 54	Model: 2 A Functions: <ul style="list-style-type: none"> ▪ Switchable ▪ Light segments ▪ Suitable for EPA

Type	Key	Model	Functions
SNLQ Magnifier luminaire	54	2	Switchable Light segments
		2 A	Switchable Light segments Suitable for EPA

Tab. 1: Model overview.

3. Mounting

⚠ CAUTION

Risk of injury caused by a falling or tilting luminaire.

Personal injury and material damage.

- ▶ Mount fastening elements correctly.

3.1 Mounting the fastening element

NOTICE

Material damage caused by missing ESD protection.

Electrostatic discharge and damage to electronic components.

- ▶ In electrostatically protected areas (EPA), only luminaires suitable for EPA must be used.
- ▶ Use only fastening elements suitable for EPA.

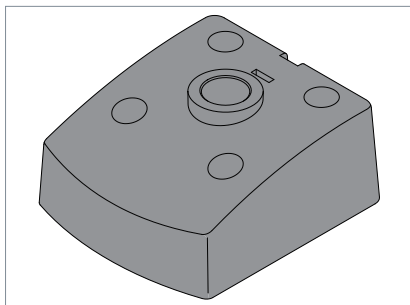


Fig. 1: Fastening element

- ▶ Screw the fastening element to the mounting surface using four suitable screws.

3.2 Mounting the luminaire to the fastening element

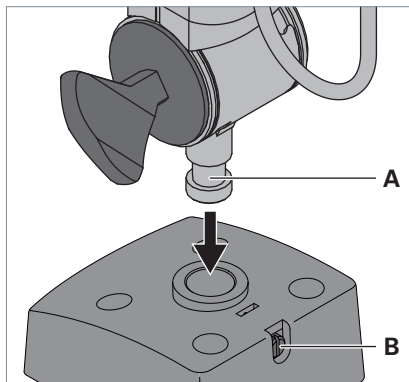


Fig. 2: Mounting the luminaire to the fastening element.

- ▶ Insert the stud **A** on the luminaire column into the opening of the fastening element, see Fig. 2
- ▶ Tighten the screw **B** to fix the column.

3.3 Mounting the magnifier cover

CAUTION

Fire risk when the magnifier is not covered and exposed to sunlight.

Personal injury and material damage.

- ▶ When the magnifier is not used, cover it with the magnifier cover.

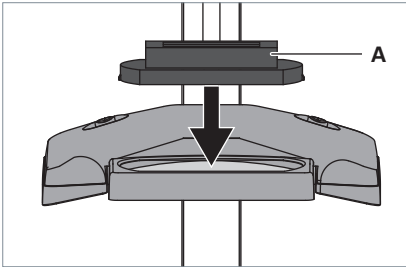


Fig. 3: Mounting the magnifier cover.

- ▶ Press the magnifier cover **A** on the magnifier from top, see Fig. 3.
The magnifier cover locks into place at the luminaire head.

4. Positioning

4.1 Adjusting the column

CAUTION

Risk of injury caused by a falling or tilting luminaire.

Personal injury and material damage.

- ▶ Hold the luminaire head when unscrewing the pivot screws.
- ▶ After positioning the column, tighten the pivot screws.

NOTICE

Material damage caused by wrong handling.

Damage to the luminaire.

- ▶ Do **not** move the pivots opposite to the intended direction of rotation.

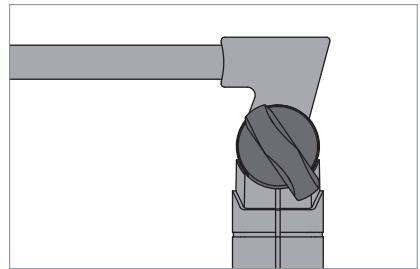


Fig. 4: Pivot and pivot screw.

- ▶ Place the luminaire in the desired position.
- ▶ Tighten each pivot screw until the luminaire is fixed in the desired position.

5. Connection

NOTICE

Material damage caused by wrong mains voltage.

Damage or destruction of the luminaire.

- ▶ Compare the mains voltage with the nominal voltage and the frequency specified on the rating plate and make sure that they are identical.

NOTICE

Material damage caused by wrong handling.

Omission of the ESD protection and damage to electronic components.

- ▶ Luminaires suitable for EPA must remain plugged in in electrostatically protected areas (EPA).
- ▶ Connect the luminaire to an inspected electric mains that meets the legal requirements using the delivered plug-in power supply only.

5.1 Connecting the luminaire to the power supply

- ▶ Plug the plug-in power supply unit into a socket.

6. Functions of the luminaire

Depending on the luminaire model, the luminaire has different functions. If you want to find out which functions the luminaire has, see chapter 2 "Model overview", page 18.

6.1 Operating functions

Switchable

This function can be used to switch the luminaire on and off.

Light segments

This function can be used to switch the individual light segments of the luminaire on and off.

The light segments create a 3D shadow effect which highlights the structure and reveals slight defects or fine differences in the surface structure of an object.

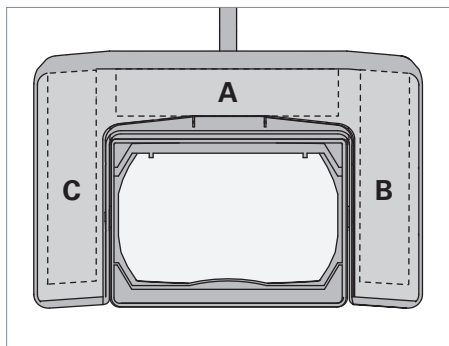


Fig. 5: Light segments

Position of rocker switch	Description
III	Light segments A + B + C are lit.
II	Light segments B + C are lit.

Suitable for EPA

Luminaires with this function are suitable for use in electrostatically protected areas (EPA).

7. Operation

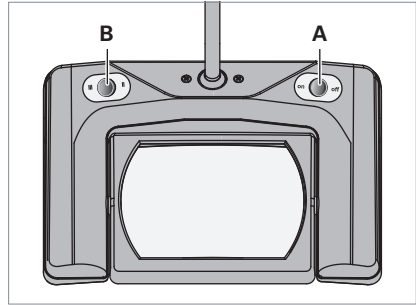


Fig. 6: Rocker switch.

7.1 Switch-on and switch-off

- ▶ To switch the luminaire on or off, press the rocker switch **A**, see Fig. 6.

7.2 Changing the light segments

- ▶ To switch the light segment **A** on or off, press the rocker switch **B**, see Fig. 6.

8. What to do if?

Problem	Possible causes	Corrective action
Luminaire is not lit.	Mains plug not plugged in.	▶ Plug the mains plug into a socket.
	Electronic components are defective.	▶ Contact our experts.
The connecting cable is damaged.	Mechanical impact on the connecting cable.	▶ Disconnect a damaged connecting cable immediately from the power supply and have it replaced by the manufacturer or by a skilled electrician.

If you want to make use of our service, our service team can be reached at:

9. Maintenance

9.1 Replacing the lamp

NOTE: The luminaire is maintenance-free. A lamp replacement is not required. If nevertheless a lamp should break down, our service team can be reached at:

9.2 Checking ESD safety

Prerequisite: The luminaire is suitable for use in electrostatically protected areas (EPA areas).

- ▶ Check luminaire every 3 months for

ESD safety and electric operational safety.

10. Cleaning

WARNING

Danger of death due to electric shock.

- ▶ Disconnect the luminaire from the mains.
- ▶ **Do not** clean with a wet cloth.

NOTICE

Material damage caused by using wrong cleaning agents.

Damage to the luminaire.

- ▶ Make sure the cleaning agents are compatible with the surface.
- ▶ Clean the luminaire with a cloth and a mild detergent.

11. Repair

NOTICE

Material damage caused by improper repair.

Damage or destruction of the luminaire.

- ▶ Have repairs performed only by the manufacturer or skilled personnel trained by the manufacturer.
- ▶ Use only spare parts approved by the manufacturer.

12. Disposal



The luminaire is subject to the European WEEE Directive.

- ▶ Dispose of the luminaire separately from domestic waste using the agencies responsible for disposal and designated by the authorities. Proper disposal avoids adverse effects on man and the environment.

13. Technical data

NOTE: The data given on the rating plate attached to the column of the luminaire apply.

13.1 Dimensions

Designation	Value
Luminaire head	298 x 194 x 75 mm
Length	430 + 400 mm

Tab. 3: Dimensions.

13.2 Electrical values

Designation	Value
Voltage range	The voltage range is specified on the rating plate of the luminaire.
Frequency range	The frequency range is specified on the rating plate of the luminaire.
Power consumption	The power consumption is specified on the rating plate of the luminaire.
Operating device	integrated

Tab. 4: Electrical values.

13.3 Classifications

Designation	Value
Protection class	I
Degree of protection	IP 20
Operating mode	Continuous operation
Technical safety check	EN 60598-1

Tab. 5: Classifications.

13.4 Magnifier data

Designation	Value
Dimension	172 x 105 mm (162 x 105 mm visible)
Strength	3 dioptries

Tab. 6: Magnifier data.

13.5 Symbols

Symbol	Designation
	Protection class I Operation with protective earth terminal
	Suitable for the electrostatically protected area (EPA)
	Suitable for mounting on normally inflammable surfaces
	CE conformity mark
	Disposal in accordance with the European WEEE Directive

Tab. 7: Symbols.