

TANEO LED OPTIMAL LIGHT FOR MULTITASKING

TANEO is a sophisticated LED lighting solution designed to provide premium performance for a myriad of task lighting applications. With three available light output levels, as well as options for lenses, color rendering and the type of mounting that will work best, TANEO can properly fulfill every luminance requirement.

TANEO is energy-efficient, consuming 30% less energy when compared to conventional task luminaires with the same luminous power. High lighting quality and ergonomic handling make TANEO ideal for manufacturing, assembly or quality control procedures, as well as laboratory, electronic or metalworking environments.



FEATURES:

- Power consumption 14W, 24W or 34W
- 4000K color temperature
- Glare-free - clear prismatic lens options
- Anodized aluminum housing
- Spring-balanced arm with 3D head joint
- Touch panel integrated in the luminaire head for on/off and 100% to 10% dimming
- 100-240V, 50/60Hz
- 10' cord with US plug included
- ETL/cETL approved

SPECIFICATIONS:

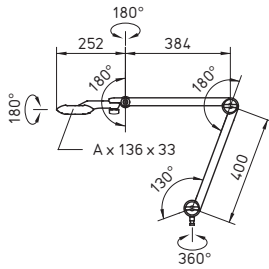
Voltage	100-240V, 50/60Hz
Lamping	LED
Controls	touch panel w/ switch on head
Color Temperature	4000K
Color Rendering Index (CRI)	Prismatic >80
Luminaire Head Material	anodized aluminum
Arm Material	aluminum
Lens Material	polycarbonate
Head Dimension	8.6", 15.7" or 22.7"
Arm Reach	40" reach (arm version)
Power Consumption	14W, 24W or 34W
Protection Rating	IP20
Certification	ETL/cETL approved; CE marked
Cord/Plug	10' power cord w/ plug
Various mounting options and accessories available	



TANEO TECHNICAL DATA



DIMENSIONAL DATA



Measurements in millimeters

ORDERING INFORMATION

Version	Wattage	Color Temp.	Lens	Dimension (A)	Lumens	Part #
Articulated arm	12W	4000K	Clear prismatic	8.6" (218mm)	700	113734000-00809719
Articulated arm	23W	4000K	Clear prismatic	15.7" (398mm)	1500	113735000-00809742
Articulated arm	30W	4000K	Clear prismatic	22.7" (577mm)	2300	113736000-00809773

Mounting Options

Item	Dimensions	Part #
Table clamp w/ pin mount (included)	0 x 3.5" span	191 025 069 40

Accessories

Item	Dimension	Part #
Wall bracket	3" x 3"	226 108 091 - 006 107 54