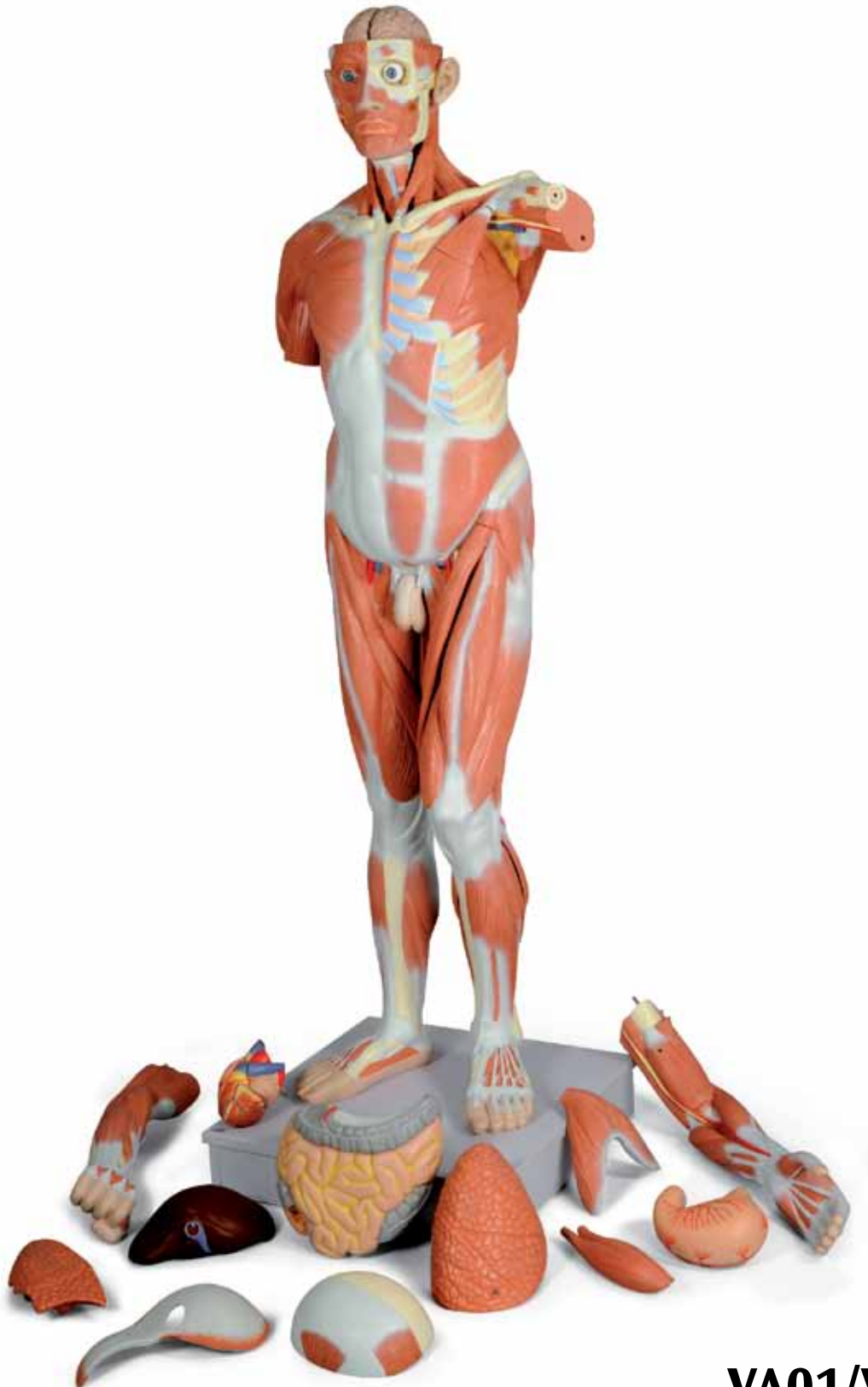




...going one step further



VA01/VA16

(1001235/1001236)

Latin

A1	Muscle figure, front view, without front chest wall and abdominal wall and without removable intestines	27	M. extensor digitorum
A2	Front chest wall and abdominal wall, lateral aspect	28	M. abductor pollicis longus
A3	Front chest wall and abdominal wall, medial aspect	29	Radius
B	Muscle figure, posterior aspect	30	Retinaculum musculorum extensorum
C	Rear chest wall and abdominal wall, without removable intestines	31	M. extensor pollicis longus, tendo
D1	Head of muscle figure, front left external view	32	M. extensor pollicis brevis, tendo
D2	Inner base of skull	33	M. extensor digitorum, tendines
D3	Head of muscle figure, front right external view	34	M. pectineus
E1	Right brain half, medial aspect	35	M. sartorius
E2	Right brain half from below	36	M. adductor longus
E3	Left half of cerebellum, front internal view	37	M. rectus femoris
F	Left eyeball with extrinsic ocular muscles and optic nerve, anterior-dorsal aspect	38	M. vastus lateralis
E4	Left brain stem, lateral aspect	39	M. vastus medialis
E5	Left brain stem, medial aspect	40	Patella
G1	Larynx and surrounding structures, front view	41	M. sartorius, m. gracilis, m. semitendinosus, tendines (Pes anserinus)
G2	Left half larynx and surrounding structures, medial aspect	42	M. gastrocnemius, caput mediale
H1	Right lung, medial aspect	43	M. tibialis anterior
H2	Front left half of lungs, rear internal view	44	Tibia, facies medialis
I1	Heart from front, without front atrioventricular wall	45	M. soleus
I2	Front atrioventricular wall of the heart	46	M. extensor digitorum longus, tendo
J	Diaphragm from above	47	M. extensor hallucis longus, tendo
K1	Stomach from front	48	Fibula, malleolus lateralis
K2	Stomach from upper rear	49	Retinaculum musculorum extensorum inferius
K3	Rear stomach wall from inside	50	M. extensor digitorum longus, tendines
L	Liver from behind	51	M. extensor hallucis brevis
M1	Intestinal tract from front, appendix opened	52	Os metatarsi [I] (Os metatarsale [I])
M2	Intestinal tract from behind	53	Os frontale
N	Front right half of kidney from inside	54	M. corrugator supercilii
O	Urinary bladder part from behind	55	Orbita
P1	Right half of the outer male sex organs from outside, penis skin and scrotum partially removed	56	Os zygomaticum
P2	Left half of the outer male sex organs from inside	57	Mandibula, ramus ^R
1	Galea aponeurotica (Aponeurosis epicranialis)	58	Vertebra cervicalis, corpus
2	M. epicranius, m. occipitofrontalis, venter frontalis	59	Discus intervertebralis
3	M. orbicularis oculi, pars orbitalis	60	V. jugularis interna sinistra
4	M. orbicularis oculi, pars palpebralis	61	M. subclavius
5	M. nasalis	62	M. palmaris longus, tendo
6	Glandula parotidea	63	Retinaculum musculorum flexorum
7	M. orbicularis oris	64	Ulna
8	M. depressor anguli oris	65	A. radialis
9	M. sternocleidomastoideus	66	M. biceps brachii, tendo
10	M. depressor labii inferioris	67	Humerus
11	M. trapezius	68	N. medianus et a. brachialis
12	M. omohyoideus, venter inferior	69	M. coracobrachialis
13	A. carotis communis dextra	70	M. triceps brachii, caput longum
14	Clavicula	71	V. basilica
15	M. deltoideus	72	M. latissimus dorsi
16	Mm. intercostales externi	73	M. teres major
17	M. pectoralis major	74	M. transversus abdominis
18	Mm. intercostales interni	75	M. quadratus lumborum
19	Costae	76	Crista iliaca
20	M. brachialis	77	M. psoas major
21	M. biceps brachii	78	M. iliacus
22	Diaphragma	79	Lig. inguinale (Arcus inguinalis)
23	Humerus, epicondylus medialis	80	N. femoralis
24	M. brachioradialis	81	V. femoralis sinistra
25	M. extensor carpi radialis longus	82	A. femoralis sinistra
26	M. extensor carpi radialis brevis	83	M. gracilis
		84	Femur, epicondylus medialis
		85	Femur, epicondylus lateralis
		86	Lig. patellae
		87	Tibia, malleolus medialis
		88	M. extensor digitorum brevis, tendines
		89	M. sternocleidomastoideus, caput mediale

90	M. sternocleidomastoideus, caput laterale	154	M. flexor digitorum longus
91	M. biceps brachii, caput longum	155	A. tibialis posterior
92	M. biceps brachii, caput breve	156	M. epicranius, m. occipitofrontalis, venter occipitalis
93	M. pectoralis minor	157	M. adductor magnus
94	M. flexor digitorum superficialis	158	Tendo calcaneus
95	M. flexor carpi ulnaris	159	V. jugularis interna dextra
96	M. palmaris longus	160	A. subclavia dextra
97	M. flexor carpi radialis	161	V. subclavia dextra
98	M. pronator teres	162	Trachea
99	Sternum, manubrium	163	V. brachiocephalica dextra
100	Vagina musculi recti abdominis, lamina anterior	164	V. cava superior
101	M. obliquus externus abdominis	165	Bronchus principalis dexter
102	M. obliquus externus abdominis, aponeurosis	166	Oesophagus, pars thoracica
103	Costa I	167	Vv. intercostales posteriores
104	Cartilago costalis	168	Truncus sympathicus
105	Sternum, corpus	169	Aa. intercostales posteriores
106	M. serratus anterior	170	V. azygos
107	Sternum, processus xiphoideus	171	Pars abdominalis aortae (Aorta abdominalis)
108	M. rectus abdominis	172	V. cava inferior
109	M. rectus abdominis, intersectiones tendineae	173	V. portae hepatis
110	M. obliquus internus abdominis	174	Ductus choledochus (Ductus biliaris)
111	Linea alba, anulus umbilicalis	175	Duodenum, pars superior
112	M. transversus thoracis	176	Ren dexter, pelvis renalis
113	Os occipitale	177	Mesocolon transversum
114	Os parietale	178	Duodenum, pars descendens
115	M. temporalis	179	Pancreas, caput
116	Os temporale	180	Ureter dexter
117	M. splenius capitis	181	A. iliaca communis dextra
118	M. levator scapulae	182	V. iliaca communis dextra
119	M. rhomboideus minor	183	A. testicularis dextra
120	M. supraspinatus	184	Rectum
121	Scapula, spina	185	V. iliaca externa dextra
122	M. extensor pollicis brevis	186	A. iliaca externa dextra
123	M. anconeus	187	Ductus deferens dexter
124	Ulna, olecranon	188	V. femoralis dextra
125	M. triceps brachii	189	A. femoralis dextra
126	M. teres minor	190	Corpora cavernosa penis
127	M. infraspinatus	191	Corpus spongiosum penis
128	M. rhomboideus major	192	A. carotis communis sinistra
129	Scapula, margo medialis	193	V. subclavia sinistra
130	M. iliocostalis	194	V. axillaris
131	M. longissimus	195	N. medianus
132	M. serratus posterior inferior	196	A. brachialis
133	M. gluteus medius	197	A. subclavia sinistra
134	M. gluteus maximus	198	V. brachiocephalica sinistra
135	M. piriformis	199	Arcus aortae
136	M. gemellus superior	200	Bronchus principalis sinister
137	M. obturatorius internus	201	Pulmo sinister
138	M. gemellus inferior	202	Pars thoracica aortae (Aorta thoracica)
139	Femur, trochanter major	203	Pulmo sinister, impressio cardiaca
140	M. quadratus femoris	204	Oesophagus, pars abdominalis
141	M. biceps femoris, caput longum	205	Splen (Lien)
142	M. semitendinosus	206	A. splenica (A. lienalis)
143	M. semimembranosus	207	V. splenica (V. lienalis)
144	N. tibialis	208	Pancreas, cauda
145	A. poplitea	209	Gl. suprarenalis sinistra
146	M. plantaris	210	Truncus coeliacus
147	M. gastrocnemius, caput laterale	211	Ren sinister
148	M. gastrocnemius	212	Flexura duodenojejunalis
149	M. gastrocnemius, tendo	213	A. mesenterica superior
150	Fibula	214	V. mesenterica superior
151	A. fibularis (A. peronea)	215	Duodenum, pars ascendens
152	M. tibialis posterior	216	Duodenum, pars horizontalis
153	M. flexor hallucis longus	217	A. iliaca communis sinistra

Latin

218	V. iliaca communis sinistra	282	N. cervicalis I, radix anterior
219	A. testicularis sinistra	283	N. cervicalis II, radix anterior
220	A. sacralis mediana	284	Lobus cerebelli anterior
221	A. iliaca interna sinistra	285	Pedunculus cerebellaris medius
222	Ureter sinister	286	Lobus flocculonodularis
223	A. iliaca externa sinistra	287	Lobus cerebelli posterior
224	V. iliaca externa sinistra	288	M. rectus medialis
225	Colon sigmoideum	289	M. rectus superior
226	Vesica urinaria	290	Sclera
227	Sutura coronalis	291	Pupilla
228	Os lacrimale	292	Tractus opticus
229	Os ethmoidale	293	Oliva
230	Maxilla	294	Os hyoideum
231	M. levator labii superioris alaeque nasi	295	M. omohyoideus, venter superior
232	M. levator anguli oris	296	M. sternohyoideus
233	M. mentalis	297	Lig. cricothyroideum medianum
234	Sutura lambdoidea	298	Gl. thyroidea
235	Os temporale, arcus zygomaticus	299	Cartilagine tracheales
236	M. buccinator	300	Epiglottis
237	N. opticus [nervus cranialis II]	301	Lig. thyrohyoideum medianum
238	A. carotis interna dextra	302	M. thyrohyoideus
239	Hypophysis (Gl. pituitaria)	303	Cartilago thyroidea
240	Dura mater cranialis	304	M. constrictor pharyngis inferior
241	Medulla spinalis	305	M. sternothyroideus
242	M. epicranii, m. temporoparietalis	306	Cartilago cuneiformis
243	M. auricularis anterior	307	Cartilago corniculata
244	Gl. parotidea, pars superficialis	308	M. arytenoideus transversus
245	Ductus parotidis	309	Cartilago cricoidea
246	M. masseter	310	Trachea, paries membranaceus
247	M. risorius	311	Oesophagus, pars cervicalis
248	M. levator labii superioris	312	Plica vestibularis
249	M. zygomaticus minor	313	Corpus adiposum preepiglotticum
250	M. zygomaticus major	314	Ventriculus laryngis
251	Plexus choroideus ventriculi tertii	315	Plica vocalis
252	Fornix	316	Conus elasticus
253	Corpus callosum	317	Apex pulmonis
254	Foramen interventriculare	318	Pulmo dexter, lobus superior
255	Thalamus	319	Pulmo dexter, lobus medius
256	Hypothalamus	320	Pulmo dexter, lobus inferior
257	Chiasma opticum	321	Pulmo sinister, lobus superior
258	N. oculomotorius [nervus cranialis III]	322	Pulmo sinister, lobus inferior
259	Pons	323	A. pulmonalis dextra
260	Hemispherium cerebri, facies medialis	324	Vv. pulmonales dextrae
261	Adhesio interthalamica	325	Atrium cordis dextrum
262	Gl. pinealis (Corpus pineale)	326	Valva trunci pulmonalis
263	Tectum mesencephali	327	Valva atrioventricularis dextra (Valva tricuspidalis)
264	Cerebellum, arbor vitae	328	Ventriculus dexter
265	Aqueductus mesencephali (Aqueductus cerebri)	329	A. coronaria dextra
266	Ventriculus quartus	330	Septum interventriculare
267	Medulla oblongata (Bulbus)	331	Apex cordis
268	Canalis centralis	332	Pars ascendens aortae (Aorta ascendens)
269	Lobus frontalis	333	Truncus pulmonalis
270	Lobus temporalis	334	Vv. pulmonales sinistrae
271	N. trochlearis [nervus cranialis IV]	335	Atrium cordis sinistrum
272	N. trigeminus [nervus cranialis V]	336	Valva atrioventricularis sinistra (Valva mitralis)
273	N. vestibulocochlearis [nervus cranialis VIII]	337	V. cardiaca magna (V. cordis magna)
274	N. facialis [nervus cranialis VII]	338	A. coronaria sinistra, r. circumflexus
275	Hemispherium cerebelli	339	Ventriculus sinister
276	N. glossopharyngeus et n. vagus [nervi craniales IX et X]	340	Auricula dextra
277	Bulbus olfactorius	341	A. coronaria sinistra, r. interventricularis anterior
278	Tractus olfactorius	342	Auricula sinistra
279	Pedunculus cerebri	343	V. cardiaca magna (V. cordis magna), v. interventricularis anterior
280	N. abducens [nervus cranialis VI]	344	Foramen venae cavae
281	N. hypoglossus [nervus cranialis XII]		

- 345 Diaphragma, centrum tendineum
- 346 Pars pylorica
- 347 Incisura angularis
- 348 Curvatura minor
- 349 Incisura cardialis
- 350 Fundus gastricus
- 351 Corpus gastricum
- 352 Curvatura major
- 353 A. gastrica sinistra
- 354 A. gastrica dextra
- 355 Ostium pyloricum
- 356 Plicae gastricae
- 357 Ostium cardiacum
- 358 Tunica mucosa
- 359 Lobus caudatus
- 360 A. hepatica propria
- 361 Impressio gastrica
- 362 Ductus hepaticus communis
- 363 Lobus quadratus
- 364 Impressio suprarenalis
- 365 Impressio renalis
- 366 Impressio duodenalis
- 367 Ductus cysticus
- 368 Impressio colica
- 369 Vesica biliaris (Vesica fellea)
- 370 Ostium ileale
- 371 Caecum
- 372 Colon transversum
- 373 Flexura coli sinistra (Flexura coli splenica)
- 374 Intestinum tenue
- 375 Colon descendens
- 376 Jejunum
- 377 Colon ascendens
- 378 A. mesenterica inferior
- 379 Appendix vermiformis
- 380 A. renalis
- 381 V. renalis
- 382 Pelvis renalis
- 383 Cortex renalis
- 384 Pyramides renales
- 385 Calices renales minores
- 386 Glandula vesiculosa (Glandula seminalis, Vesicula seminalis)
- 387 Scrotum
- 388 Epididymis
- 389 Testis (Orchis)
- 390 Preputium penis
- 391 Urethra masculina
- 392 Septum scroti
- 393 Glans penis
- 394 Ostium urethrae externum



VA01 Life-size male muscle figure, 37 parts

VA16 Life-size male muscle torso, 27 parts

A1	Muscle figure, front view, without front chest wall and abdominal wall and without removable intestines	21	Biceps brachii
A2	Front chest wall and abdominal wall, external aspect	22	Diaphragm
A3	Front chest wall and abdominal wall, internal aspect	23	Humerus, medial epicondyle
B	Muscle figure, rear view	24	Brachioradialis
C	Rear chest wall and abdominal wall, without removable intestines	25	Extensor carpi radialis longus
D1	Head of muscle figure, front left external view	26	Extensor carpi radialis brevis
D2	Inner base of skull	27	Extensor digitorum
D3	Head of muscle figure, front right external view	28	Abductor pollicis longus
E1	Right brain half, medial view	29	Radius
E2	Right brain half, inferior view	30	Extensor retinaculum
E3	Left half of cerebellum, front medial view	31	Extensor pollicis longus, tendon
F	Left eyeball with extrinsic ocular muscles and optic nerve, front medial view	32	Extensor pollicis brevis, tendon
E4	Left brain stem, lateral view	33	Extensor digitorum, tendons
E5	Left brain stem, medial view	34	Pectineus
G1	Larynx and surrounding structures, front view	35	Sartorius
G2	Left half of larynx and surrounding structures, medial view	36	Adductor longus
H1	Right lung, medial view	37	Rectus femoris
H2	Front left half of lungs, rear internal view	38	Vastus lateralis
I1	Heart, front view, without front atrioventricular wall	39	Vastus medialis
I2	Front atrioventricular wall of the heart	40	Patella
J	Diaphragm, superior view	41	Sartorius, gracilis, semitendinosus, tendons („goose foot“)
K1	Stomach, front view	42	Gastrocnemius, medial head
K2	Stomach, upper rear view	43	Tibialis anterior
K3	Rear stomach wall, internal aspect	44	Tibia, medial surface
L	Liver, rear view	45	Soleus
M1	Intestinal tract, front view, caecum opened	46	Extensor digitorum longus, tendon
M2	Intestinal tract, rear view	47	Extensor hallucis longus, tendon
N	Front right half of kidney, internal aspect	48	Fibula, lateral malleolus
O	Urinary bladder part, rear view	49	Cruciate crural ligament of ankle
P1	Right half of the outer male sex organs lateral aspect, penis skin and scrotum partially removed	50	Extensor digitorum longus, tendons
P2	Left half of the outer male sex organs, medial view	51	Extensor hallucis brevis
1	Epicranial aponeurosis	52	Metatarsal I
2	Epicranius, occipitofrontalis, frontal belly	53	Frontal bone
3	Orbicularis oculi, orbital part	54	Corrugator supercilii
4	Orbicularis oculi, palpebral part	55	Orbit
5	Nasalis	56	Zygomatic bone
6	Parotid gland	57	Mandible, ramus
7	Orbicularis oris	58	Cervical vertebra, body
8	Depressor anguli oris	59	Intervertebral disc
9	Sternocleidomastoid	60	Left internal jugular vein
10	Depressor labii inferioris	61	Subclavius
11	Trapezius	62	Palmaris longus, tendon
12	Omohyoid, inferior belly	63	Flexor retinaculum
13	Right common carotid artery	64	Ulna
14	Clavicle	65	Radial artery
15	Deltoid	66	Biceps brachii, tendon
16	External intercostal muscles	67	Humerus
17	Pectoralis major	68	Median nerve and brachial artery
18	Internal intercostal muscles	69	Coracobrachialis
19	Ribs	70	Triceps brachii, long head
20	Brachialis	71	Basilic vein
		72	Latissimus dorsi
		73	Teres major
		74	Transversus abdominis
		75	Quadratus lumborum
		76	Crest of ilium
		77	Psoas major
		78	Iliacus
		79	Inguinal ligament
		80	Femoral nerve
		81	Left femoral vein

82	Left femoral artery	146	Plantaris
83	Gracilis	147	Gastrocnemius, lateral head
84	Femur (Thigh bone), medial epicondyle	148	Gastrocnemius
85	Femur (Thigh bone), lateral epicondyle	149	Gastrocnemius, tendon
86	Patellar ligament	150	Fibula
87	Tibia, medial malleolus	151	Fibular artery (Peroneal artery)
88	Extensor digitorum brevis, tendons	152	Tibialis posterior
89	Sternocleidomastoid, medial head	153	Flexor hallucis longus
90	Sternocleidomastoid, lateral head	154	Flexor digitorum longus
91	Biceps brachii, long head	155	Posterior tibial artery
92	Biceps brachii, short head	156	Epicranium, occipitofrontalis, occipital belly
93	Pectoralis minor	157	Adductor magnus
94	Flexor digitorum superficialis	158	Calcaneal tendon
95	Flexor carpi ulnaris	159	Right internal jugular vein
96	Palmaris longus	160	Right subclavian artery
97	Flexor carpi radialis	161	Right subclavian vein
98	Pronator teres	162	Trachea (Windpipe)
99	Sternum, manubrium	163	Right brachiocephalic vein
100	Rectus sheath, anterior layer	164	Superior vena cava
101	External oblique	165	Right main bronchus
102	External oblique, aponeurosis	166	Oesophagus (Esophagus), thoracic part
103	1st rib	167	Posterior intercostal veins
104	Costal cartilage	168	Sympathetic trunk
105	Sternum, body	169	Posterior intercostal arteries
106	Serratus anterior	170	Azygos vein
107	Sternum, xiphoid process	171	Abdominal part of aorta (Abdominal aorta)
108	Rectus abdominis	172	Inferior vena cava
109	Rectus abdominis, tendinous intersections	173	Hepatic portal vein
110	Internal oblique	174	Bile duct
111	Linea alba, umbilical ring	175	Duodenum, superior part
112	Transversus thoracis	176	Right kidney, renal pelvis
113	Occipital bone	177	Transverse mesocolon
114	Parietal bone	178	Duodenum, descending part
115	Temporal muscle	179	Pancreas, head
116	Temporal bone	180	Right ureter
117	Splenius capitis	181	Right common iliac artery
118	Levator scapulae	182	Right common iliac vein
119	Rhomboid minor	183	Right testicular artery
120	Supraspinatus	184	Rectum
121	Scapula, spine	185	Right external iliac vein
122	Extensor pollicis brevis	186	Right external iliac artery
123	Anconeus	187	Right ductus deferens (Right vas deferens)
124	Ulna, olecranon	188	Right femoral vein
125	Triceps brachii	189	Right femoral artery
126	Teres minor	190	Corpora cavernosa penis (Cavernous bodies of penis)
127	Infraspinatus	191	Corpus spongiosum penis (Spongy body of penis)
128	Rhomboid major	192	Left common carotid artery
129	Scapula, medial border	193	Left subclavian vein
130	Iliocostalis	194	Axillary vein
131	Longissimus	195	Median nerve
132	Serratus posterior inferior	196	Brachial artery
133	Gluteus medius	197	Left subclavian artery
134	Gluteus maximus	198	Left brachiocephalic vein
135	Piriformis	199	Arch of aorta (Aortic arch)
136	Gemellus superior	200	Left main bronchus
137	Obturator internus	201	Left lung
138	Gemellus inferior	202	Thoracic aorta
139	Femur (Thigh bone), greater trochanter	203	Left lung, cardiac impression
140	Quadratus femoris	204	Oesophagus (Esophagus), abdominal part
141	Biceps femoris muscle, long head	205	Spleen
142	Semitendinosus	206	Splenic artery
143	Semimembranosus	207	Splenic vein
144	Tibial nerve	208	Pancreas, tail
145	Popliteal artery	209	Left suprarenal gland (Left adrenal gland)

English

- 210 Coeliac trunk (Celiac trunk)
211 Left kidney
212 Duodenojejunal flexure
213 Superior mesenteric artery
214 Superior mesenteric vein
215 Duodenum, ascending part
216 Duodenum, inferior part (horizontal part, transverse part)
217 Left common iliac artery
218 Left common iliac vein
219 Left testicular artery
220 Median sacral artery
221 Left internal iliac artery
222 Left ureter
223 Left external iliac artery
224 Left external iliac vein
225 Sigmoid colon
226 Urinary bladder
227 Coronal suture
228 Lacrimal bone
229 Ethmoid (Ethmoidal bone)
230 Maxilla
231 Levator labii superioris alaeque nasi
232 Levator anguli oris
233 Mentalis
234 Lambdoid suture
235 Temporal bone, zygomatic arch
236 Buccinator
237 Optic nerve [2nd cranial nerve]
238 Right internal carotid artery
239 Pituitary gland
240 Cranial dura mater
241 Spinal cord
242 Epicranium, temporoparietalis
243 Auricularis anterior
244 Parotid gland, superficial part
245 Parotid duct
246 Masseter
247 Risorius
248 Levator labii superioris
249 Zygomaticus minor
250 Zygomaticus major
251 Choroid plexus of third ventricle
252 Fornix
253 Corpus callosum
254 Interventricular foramen
255 Thalamus
256 Hypothalamus
257 Optic chiasm (Optic chiasma)
258 Oculomotor nerve [3rd cranial nerve]
259 Pons
260 Cerebral hemisphere, medial surface
261 Interthalamic adhesion (Massa intermedia)
262 Pineal gland (Pineal body)
263 Tectum of midbrain
264 Cerebellum, arbor vitae
265 Aqueduct of midbrain (Cerebral aqueduct)
266 Fourth ventricle
267 Medulla oblongata (Bulb)
268 Central canal
269 Frontal lobe
270 Temporal lobe
271 Trochlear nerve [4th cranial nerve]
272 Trigeminal nerve [5th cranial nerve]
273 Vestibulocochlear nerve [8th cranial nerve]
274 Facial nerve [7th cranial nerve]
275 Cerebellar hemisphere
276 Glossopharyngeal nerve [9th cranial nerve] and vagus nerve [10th cranial nerve]
277 Olfactory bulb
278 Olfactory tract
279 Cerebral peduncle
280 Abducent nerve (Abducens nerve) [6th cranial nerve]
281 Hypoglossal nerve [12th cranial nerve]
282 First cervical nerve, anterior root
283 Second cervical nerve, anterior root
284 Anterior lobe of cerebellum
285 Middle cerebellar peduncle
286 Flocculonodular lobe
287 Posterior lobe of cerebellum
288 Medial rectus
289 Superior rectus
290 Sclera
291 Pupil
292 Optic tract
293 Inferior olive
294 Hyoid bone
295 Omohyoid, superior belly
296 Sternohyoid
297 Median cricothyroid ligament
298 Thyroid gland
299 Tracheal cartilages
300 Epiglottis
301 Median thyrohyoid ligament
302 Thyrohyoid
303 Thyroid cartilage [®]
304 Inferior constrictor
305 Sternothyroid
306 Cuneiform cartilage (Cartilage of WRISBERG)
307 Corniculate cartilage (Cartilage of SANTORINI)
308 Transverse arytenoid
309 Cricoid cartilage
310 Trachea, membranaceous wall
311 Oesophagus (Esophagus), cervical part
312 Vestibular fold
313 Pre-epiglottic fat body
314 Laryngeal ventricle (Ventricle of MORGAGNI)
315 Vocal fold
316 Conus elasticus (Cricovocal membrane)
317 Apex of lung
318 Right lung, superior lobe
319 Right lung, middle lobe
320 Right lung, inferior lobe
321 Left lung, superior lobe
322 Left lung, inferior lobe
323 Right pulmonary artery
324 Right pulmonary veins
325 Right atrium of heart
326 Pulmonary valve
327 Tricuspid valve (Right atrioventricular valve)
328 Right ventricle
329 Right coronary artery
330 Interventricular septum
331 Apex of heart
332 Ascending aorta
333 Pulmonary trunk
334 Left pulmonary veins
335 Left atrium of heart

- 336 Mitral valve (Left atrioventricular valve)
- 337 Great cardiac vein
- 338 Left coronary artery, circumflex branch
- 339 Left ventricle
- 340 Right auricle
- 341 Left coronary artery, anterior interventricular branch
- 342 Left auricle
- 343 Great cardiac vein, anterior interventricular vein
- 344 Caval opening
- 345 Diaphragm, central tendon
- 346 Pyloric part
- 347 Angular notch
- 348 Lesser curvature
- 349 Cardial notch
- 350 Fundus of stomach
- 351 Body of stomach
- 352 Greater curvature
- 353 Left gastric artery
- 354 Right gastric artery
- 355 Pyloric orifice
- 356 Gastric folds (Gastric rugae)
- 357 Cardial orifice
- 358 Mucosa (Mucous membrane)
- 359 Caudate lobe
- 360 Hepatic artery proper
- 361 Gastric impression
- 362 Common hepatic duct
- 363 Quadrate lobe
- 364 Suprarenal impression
- 365 Renal impression
- 366 Duodenal impression
- 367 Cystic duct
- 368 Colic impression
- 369 Gallbladder
- 370 Ileal orifice (Orifice of ileal papilla)
- 371 Caecum (Cecum)
- 372 Transverse colon
- 373 Left colic flexure (Splenic flexure)
- 374 Small intestine
- 375 Descending colon
- 376 Jejunum
- 377 Ascending colon
- 378 Inferior mesenteric artery
- 379 Appendix (Vermiform appendix)
- 380 Renal artery
- 381 Renal vein
- 382 Renal pelvis
- 383 Renal cortex
- 384 Renal pyramids
- 385 Minor calices
- 386 Seminal gland (Seminal vesicle)
- 387 Scrotum
- 388 Epididymis
- 389 Testis
- 390 Prepuce (Foreskin)
- 391 Male urethra
- 392 Septum of scrotum
- 393 Glans penis
- 394 External urethral orifice (External urinary meatus)



A1

53

1

2

3

4

5

6

7

8

9

10

11

12

54

55

56

57

58

59

60

15

9

90

89

91

92

21

61

67

68

69

70

71

72

73

74

75

76

77

78

79

13

14

15

16

17

18

19

20

21

22

23

24

25

26

27

62

63

64

65

24

66

93

20

14

90

99

A2

17

61

103

104

93

105

106

18

107

16

94

95

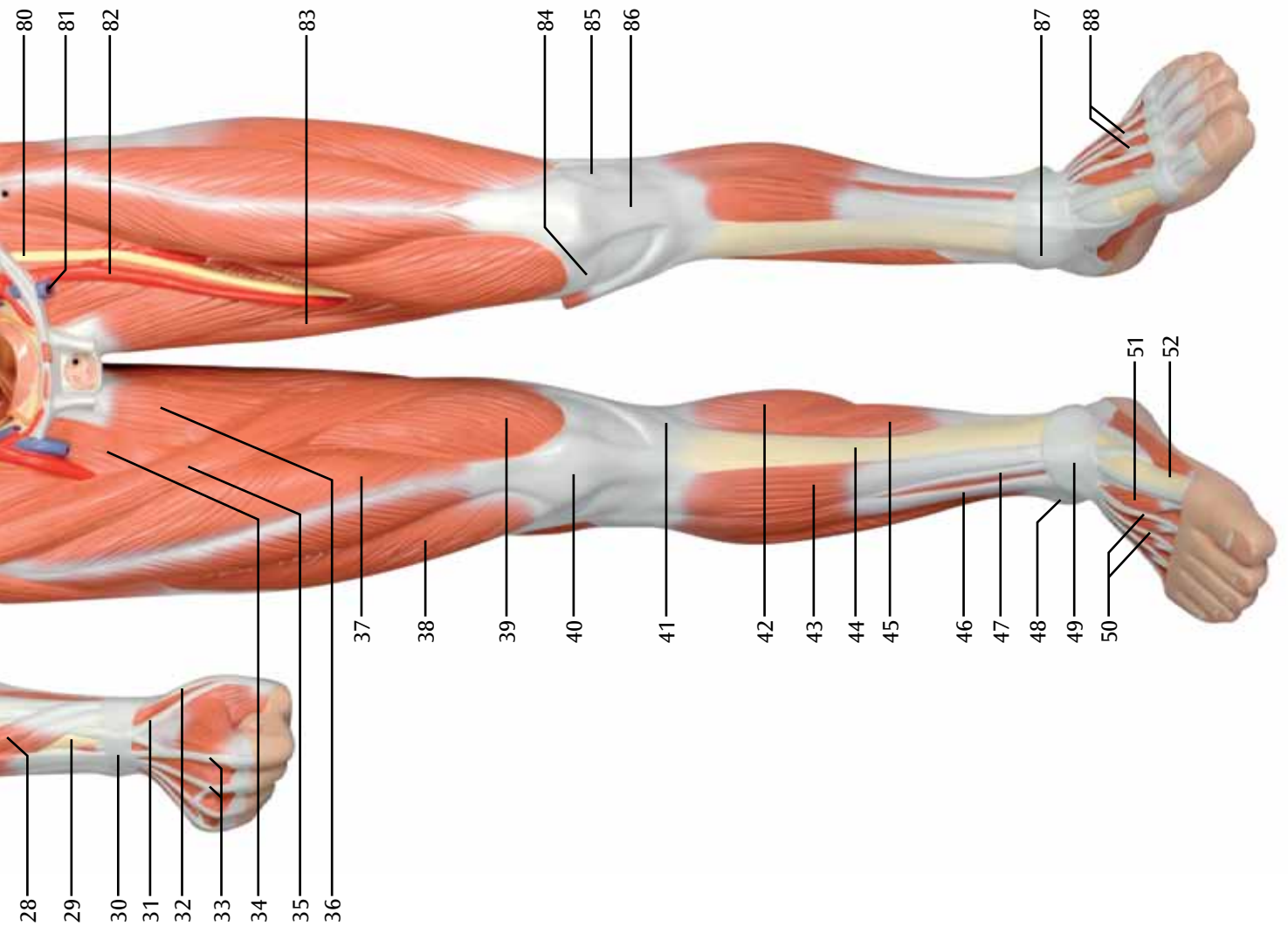
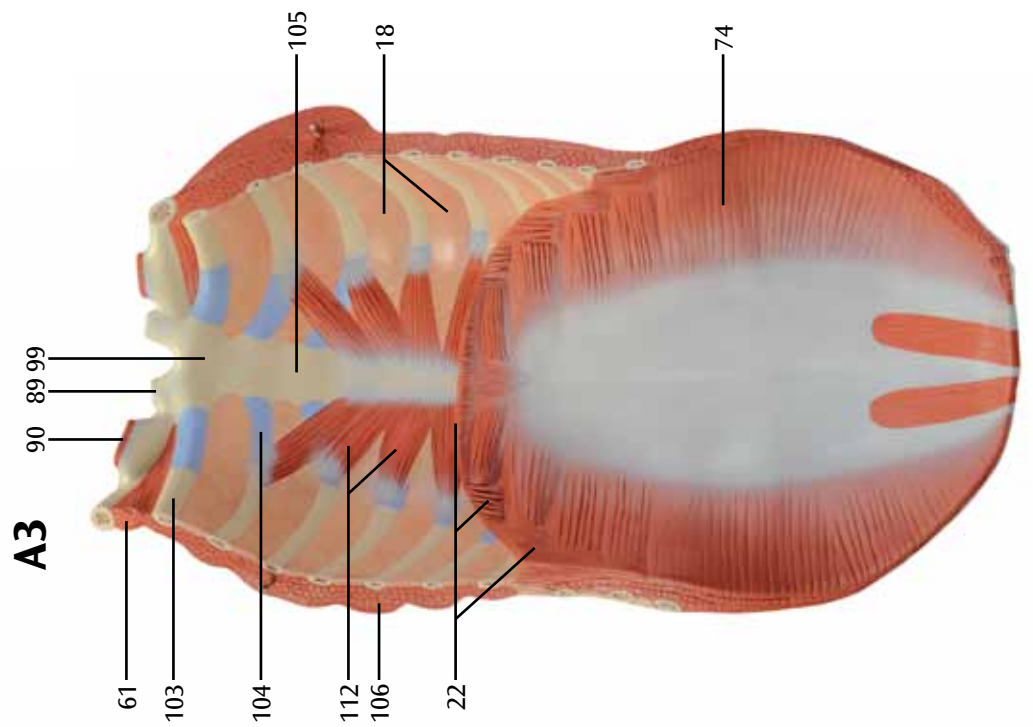
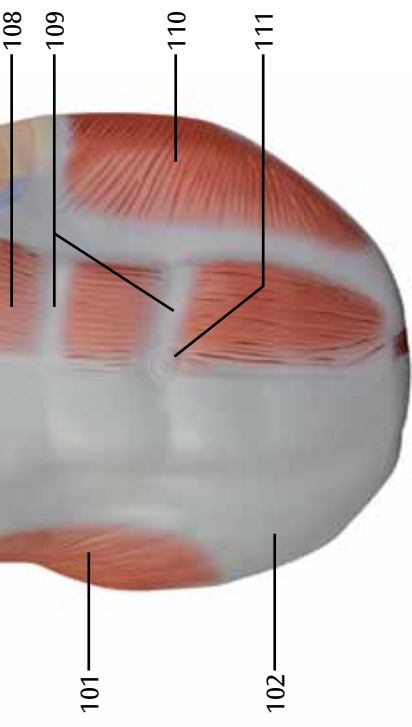
96

97

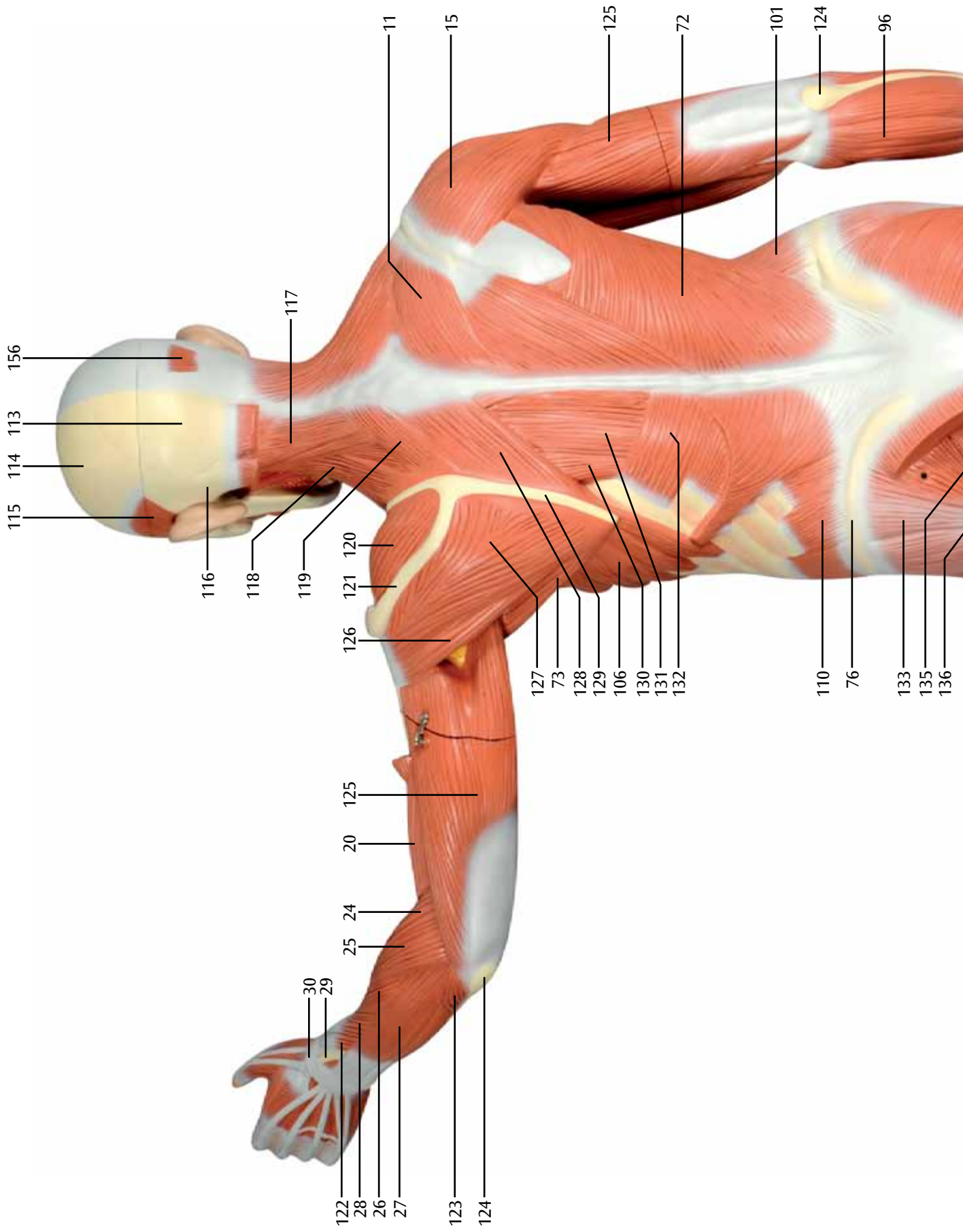
98

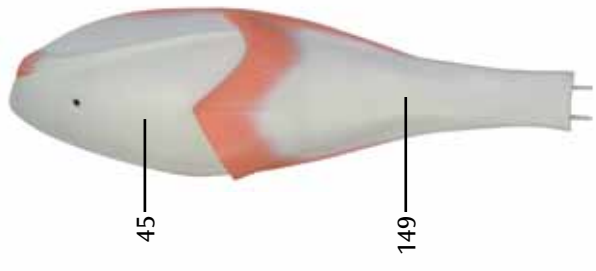
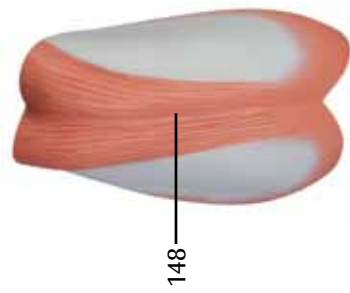
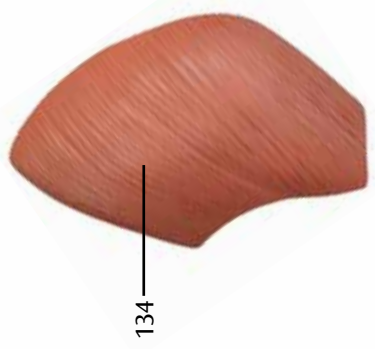
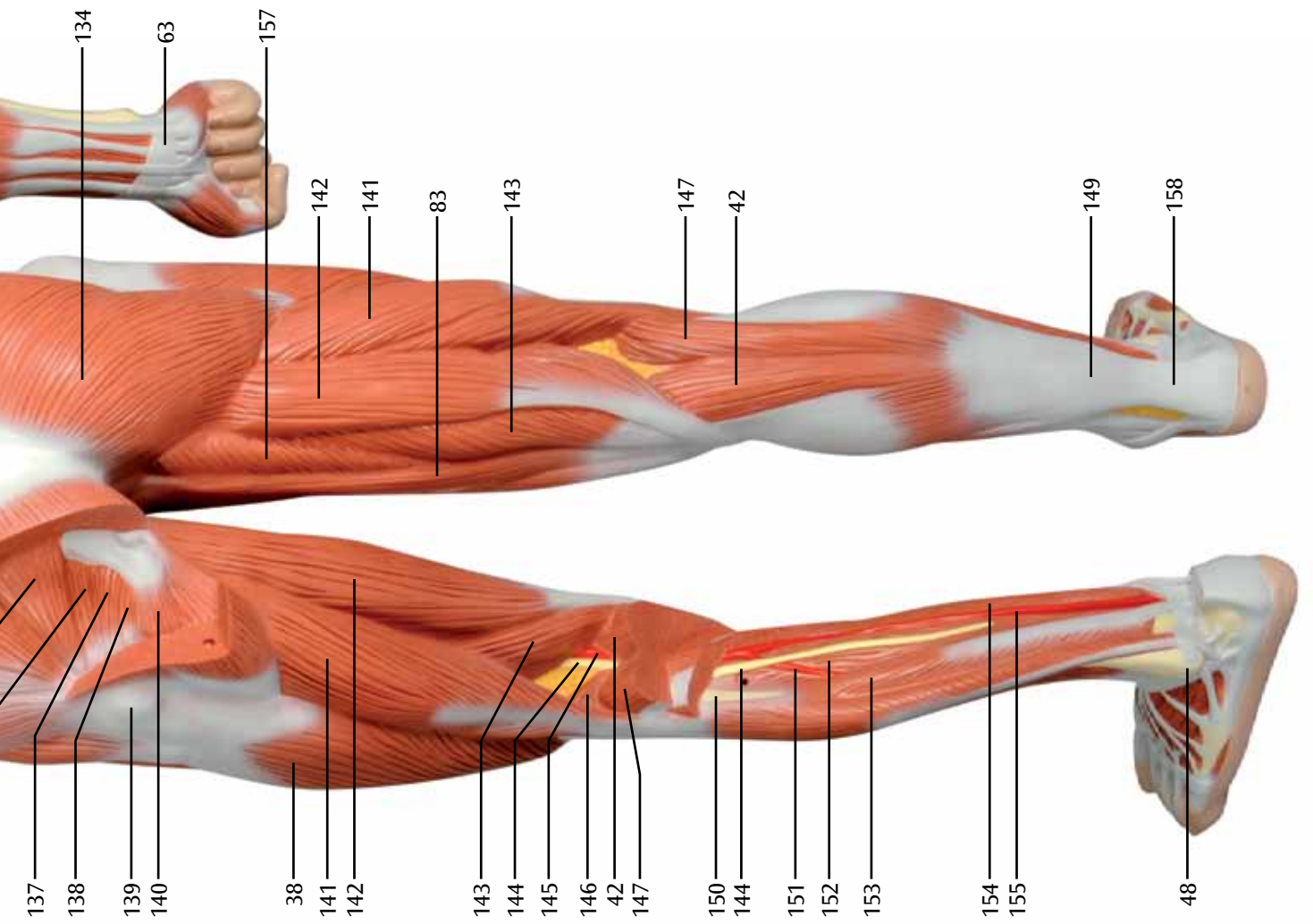
100

79

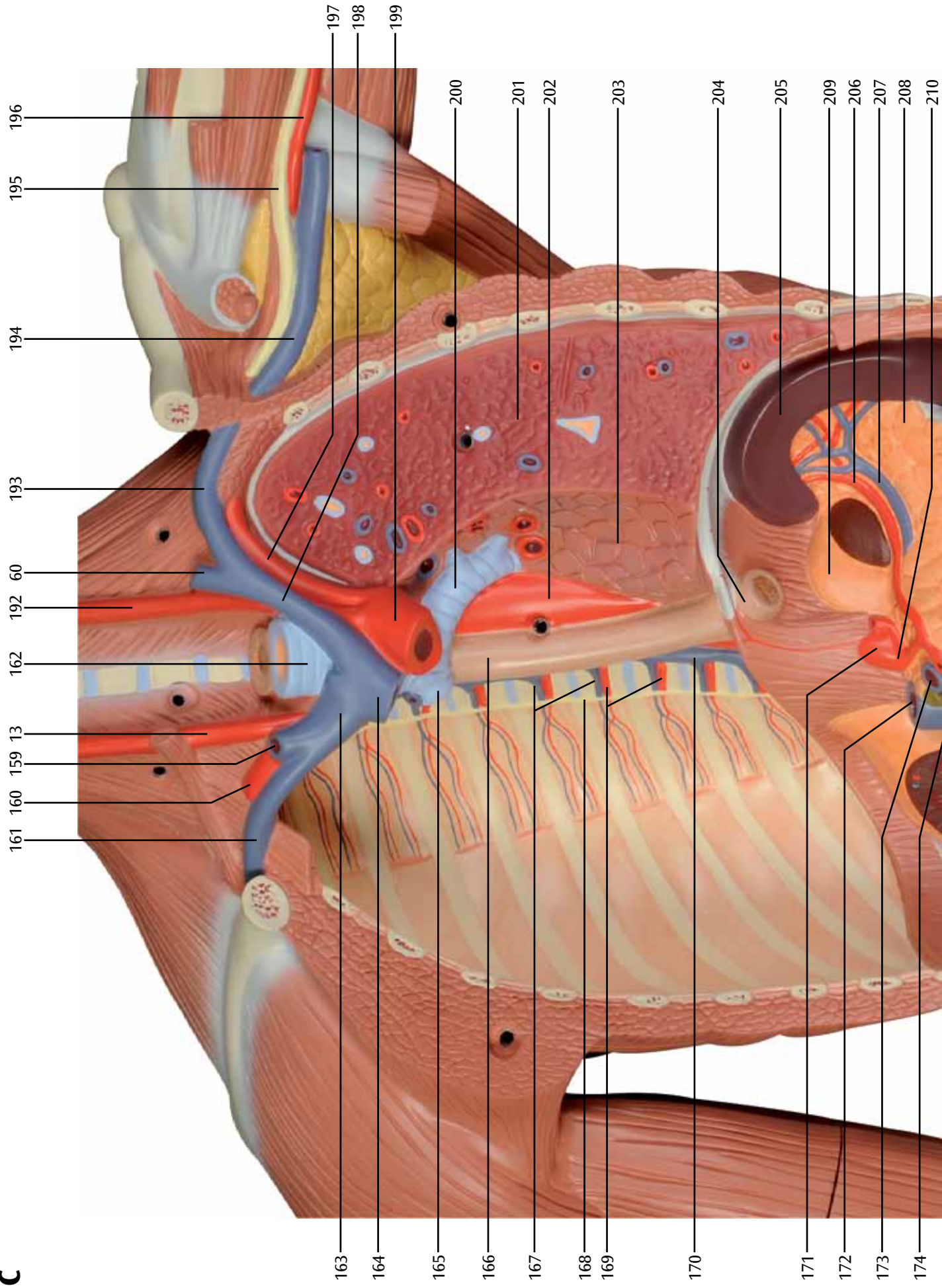


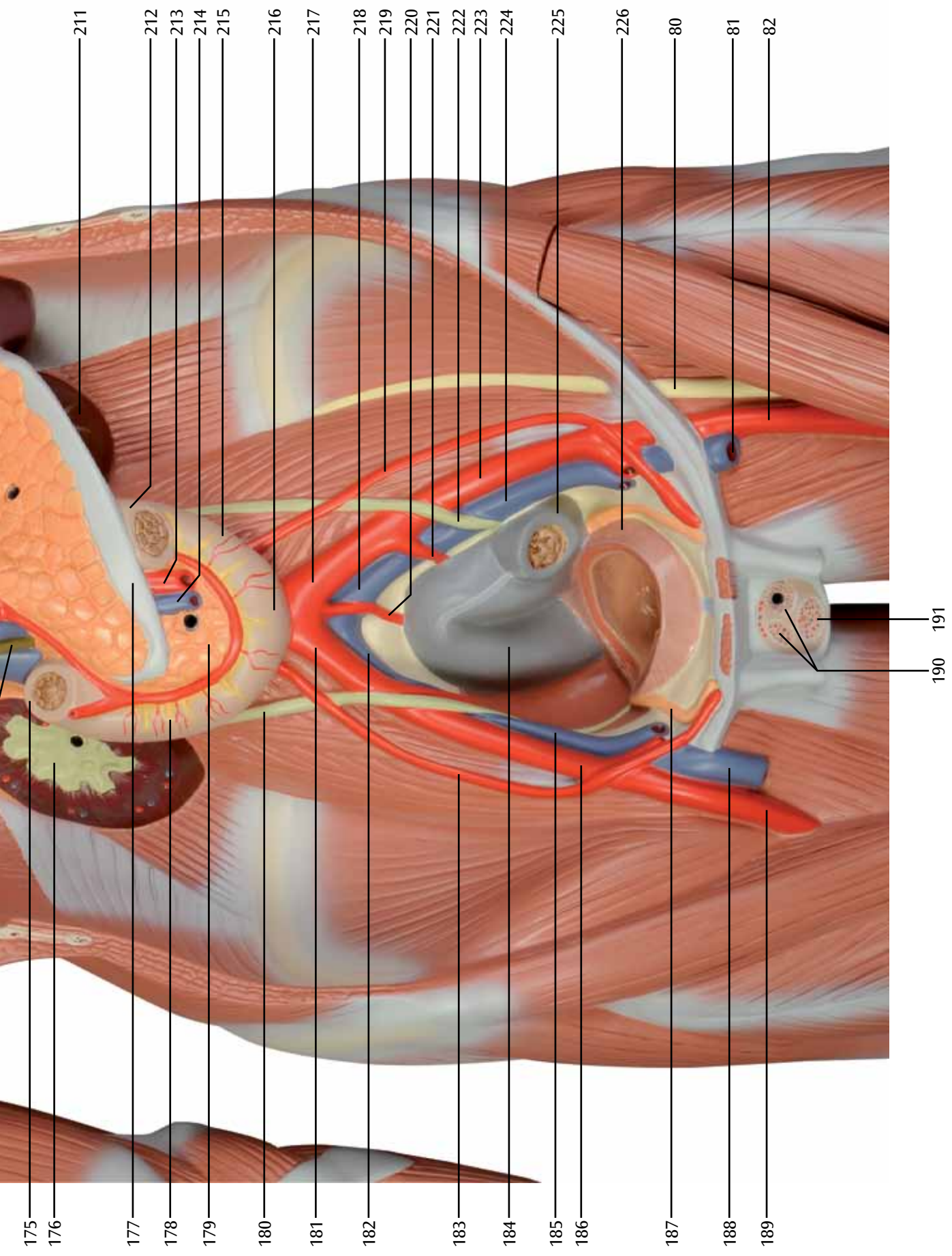
B



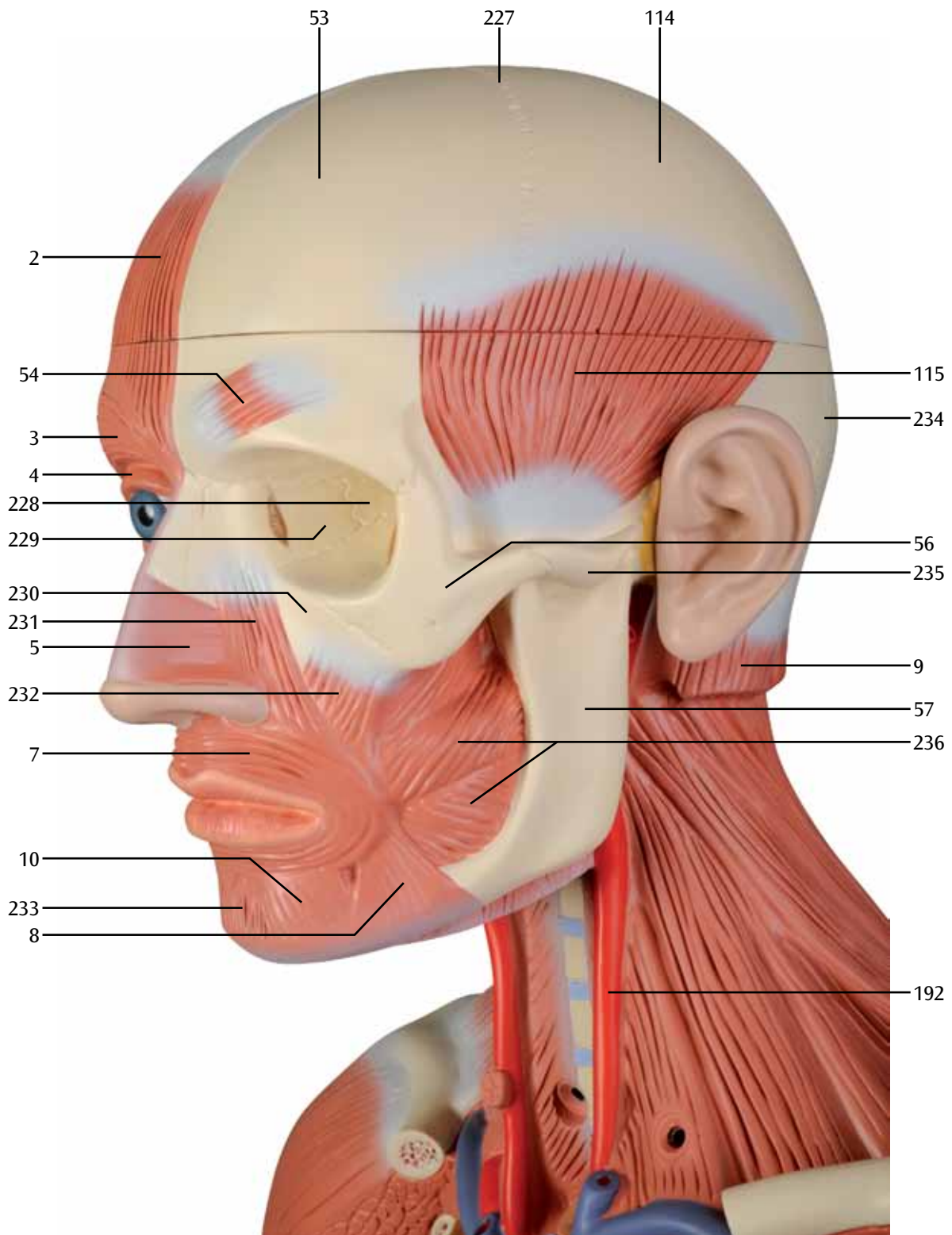


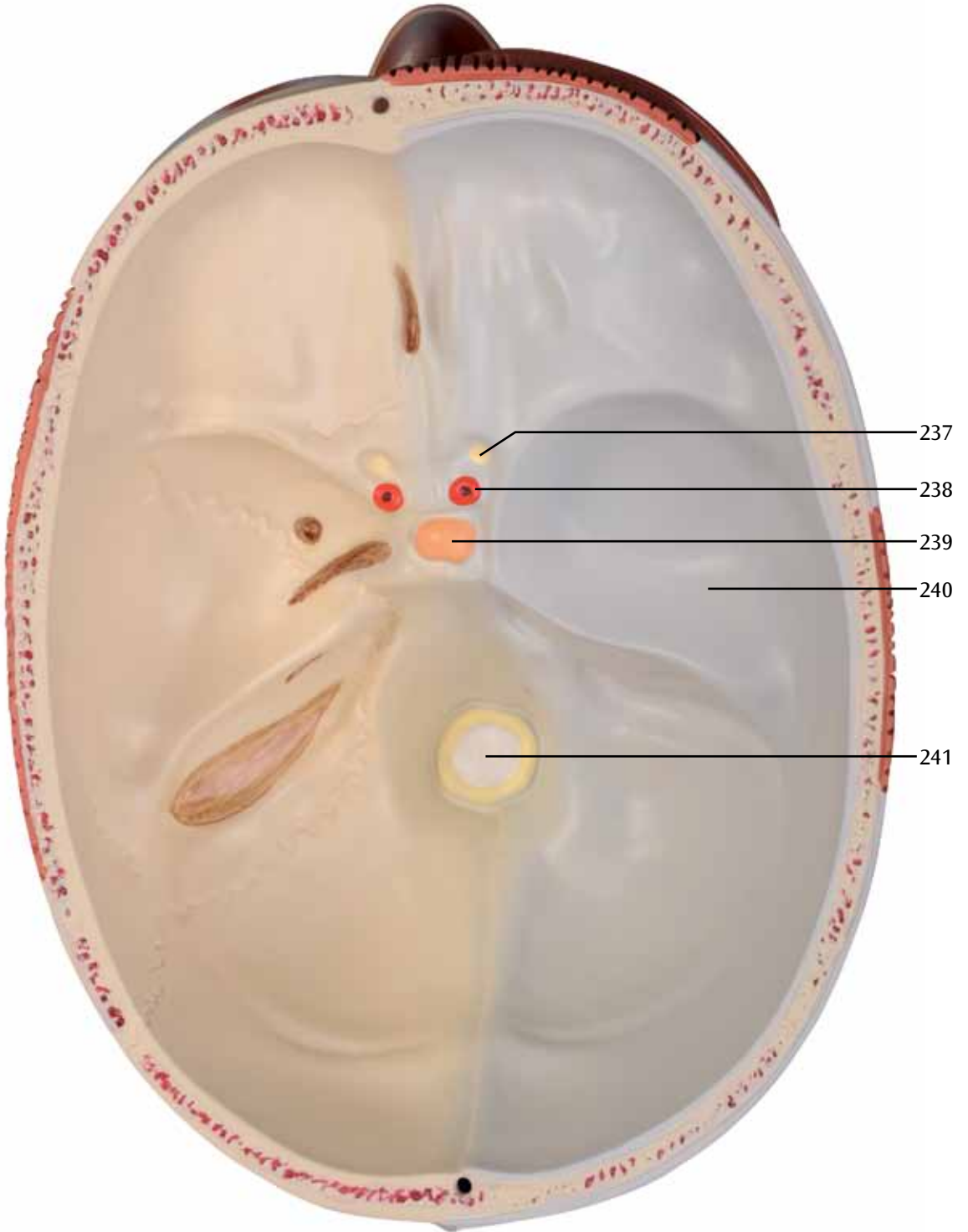
C



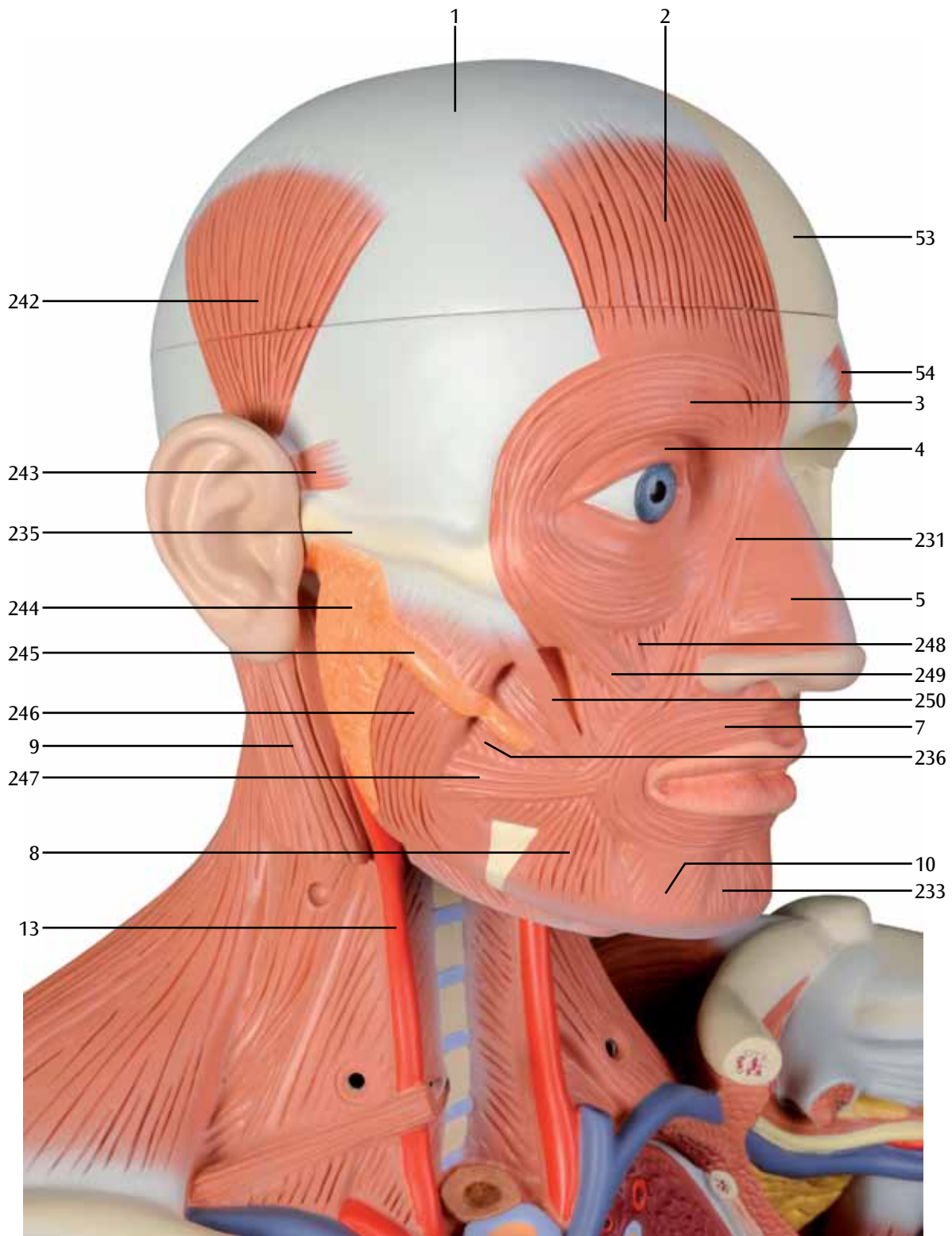


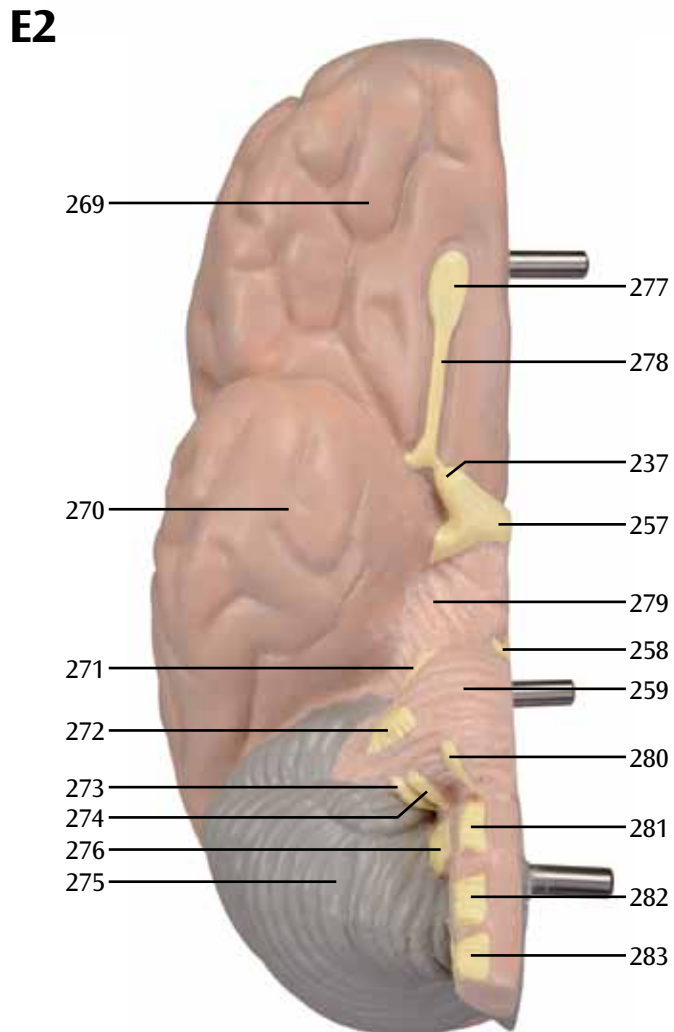
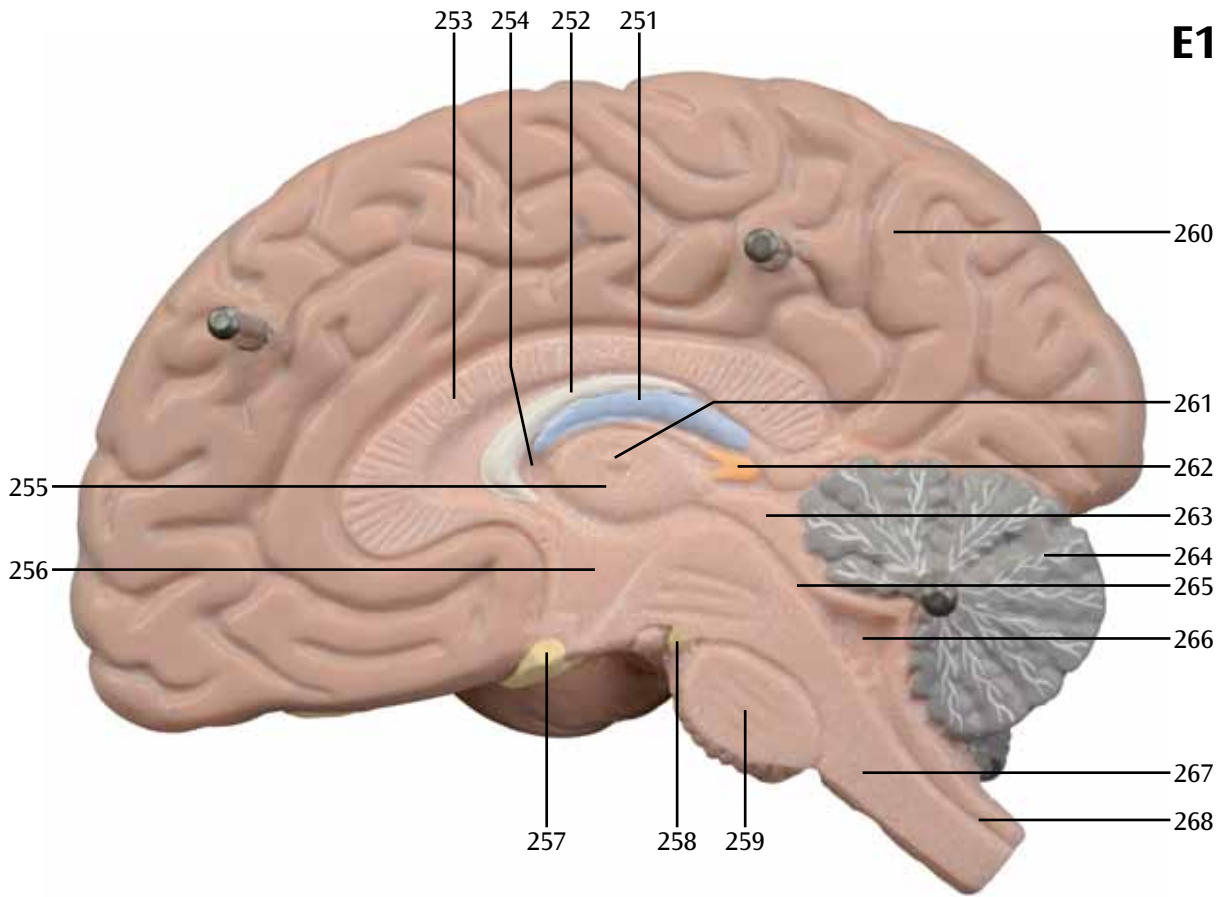
D1



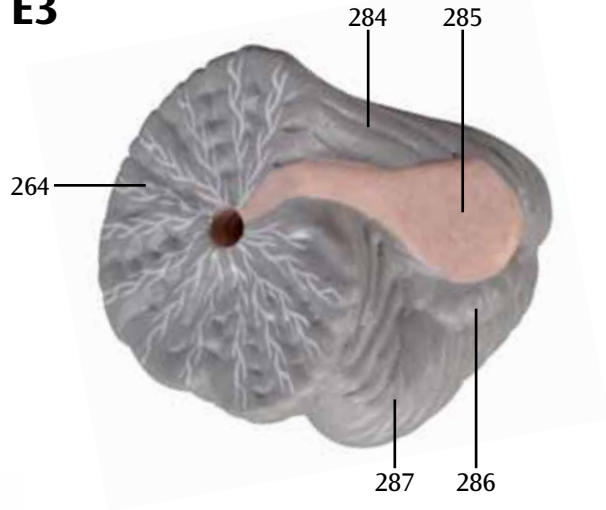


D3

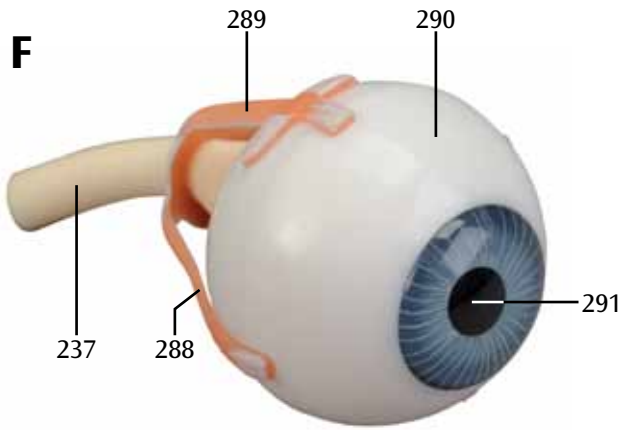




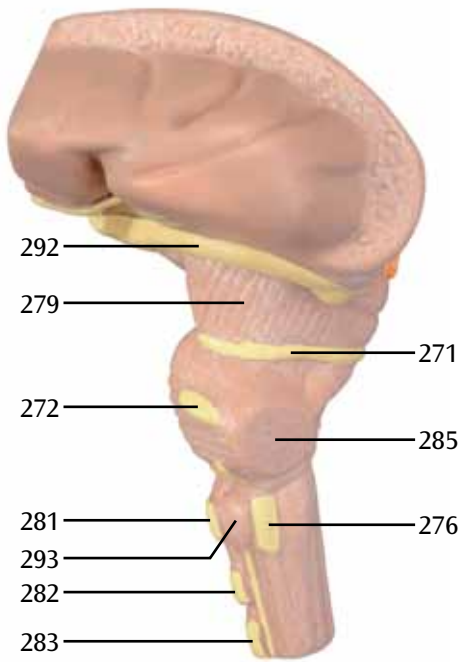
E3



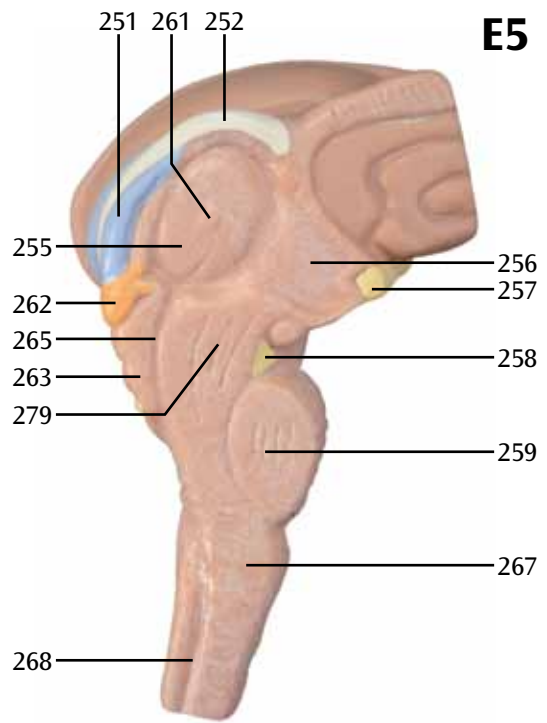
F



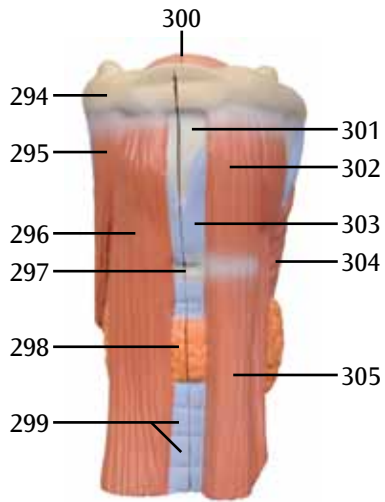
E4



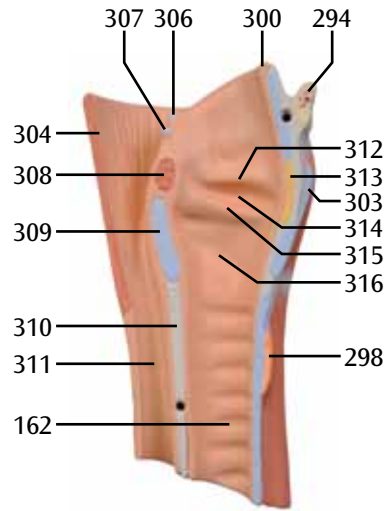
E5



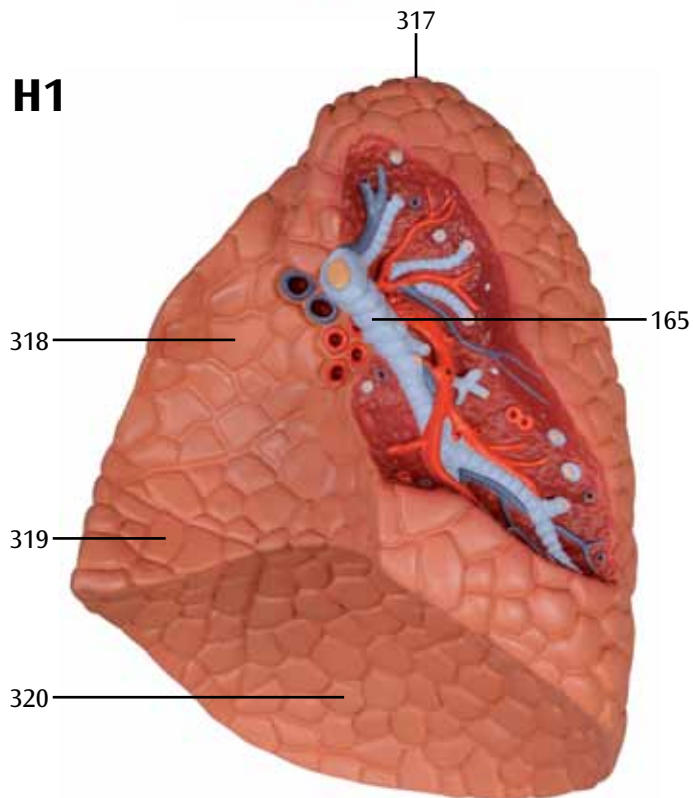
G1



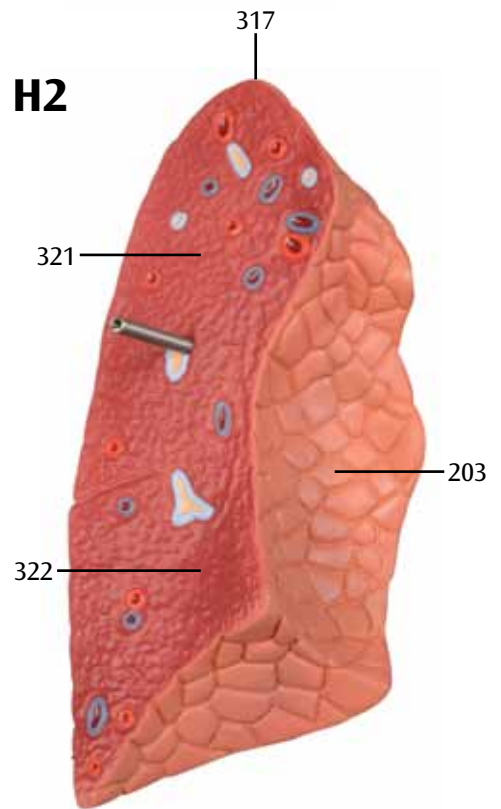
G2



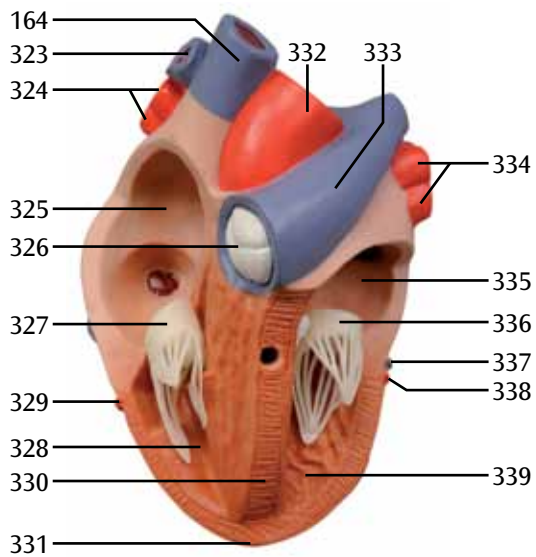
H1



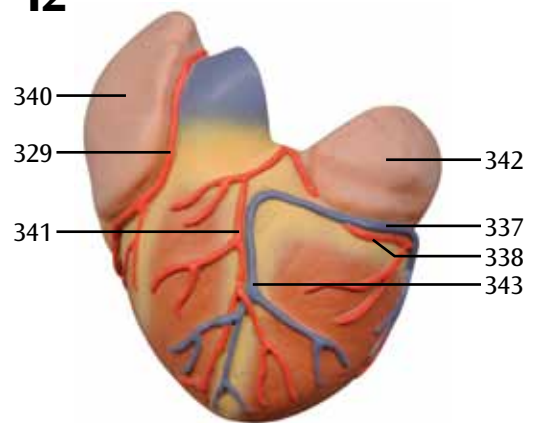
H2

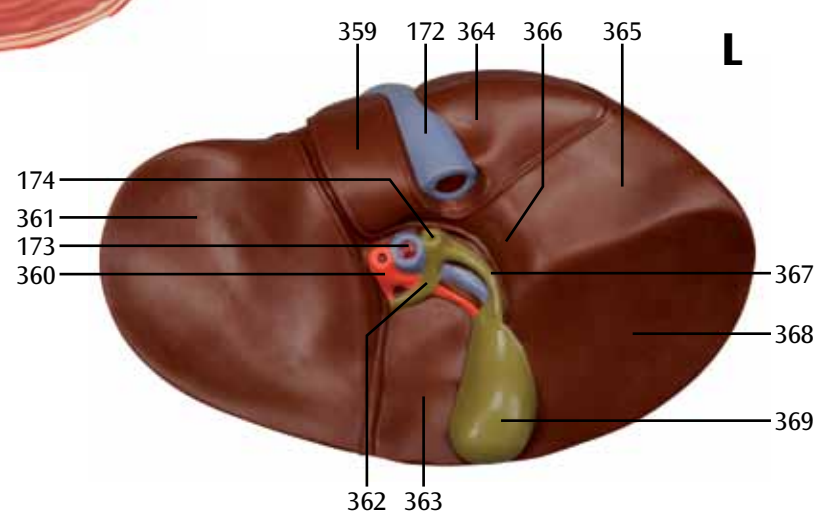
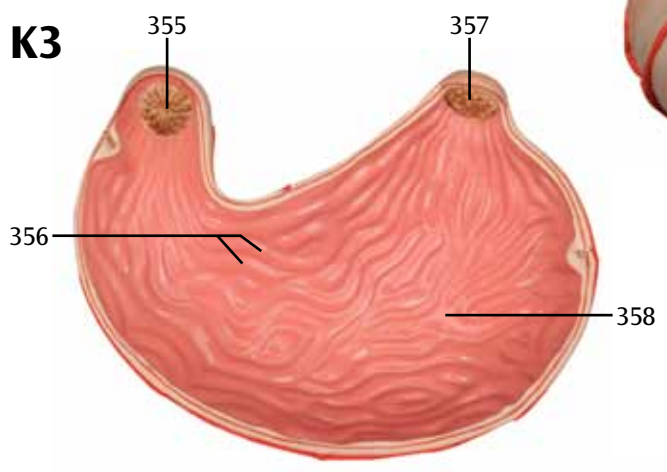
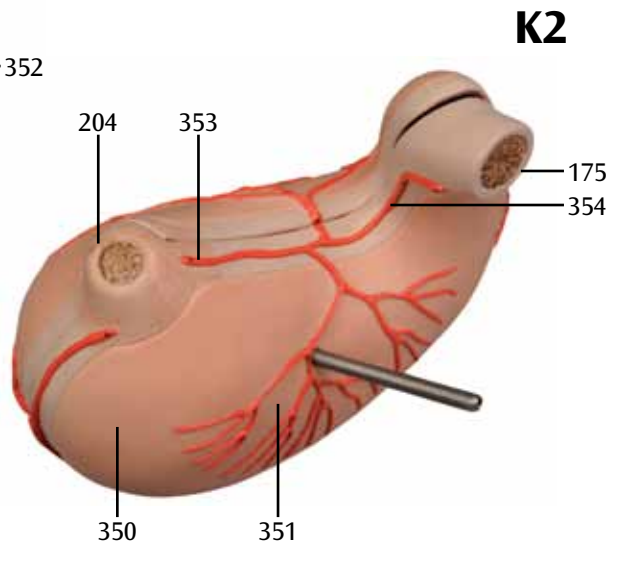
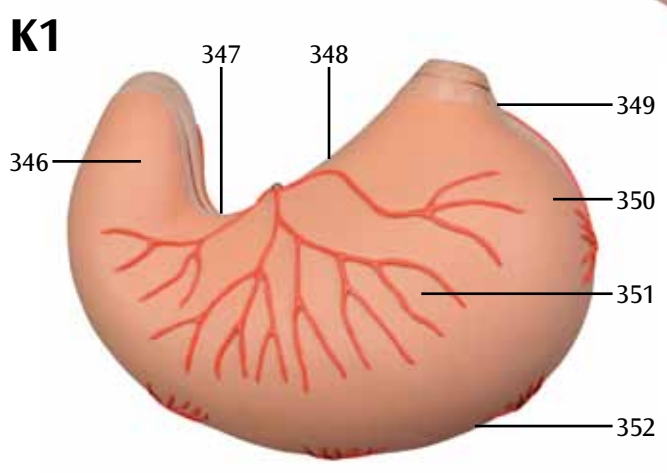
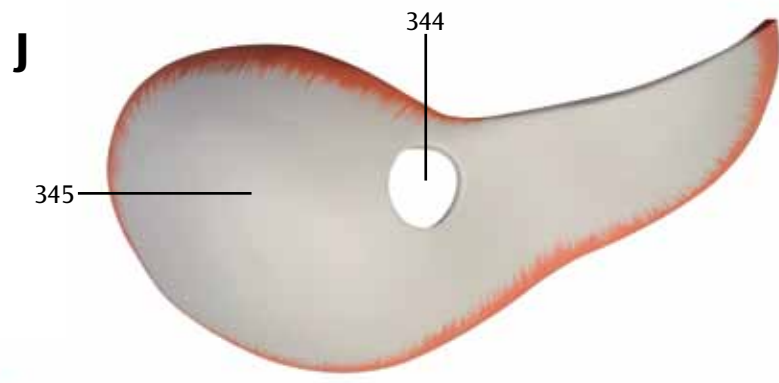


I1

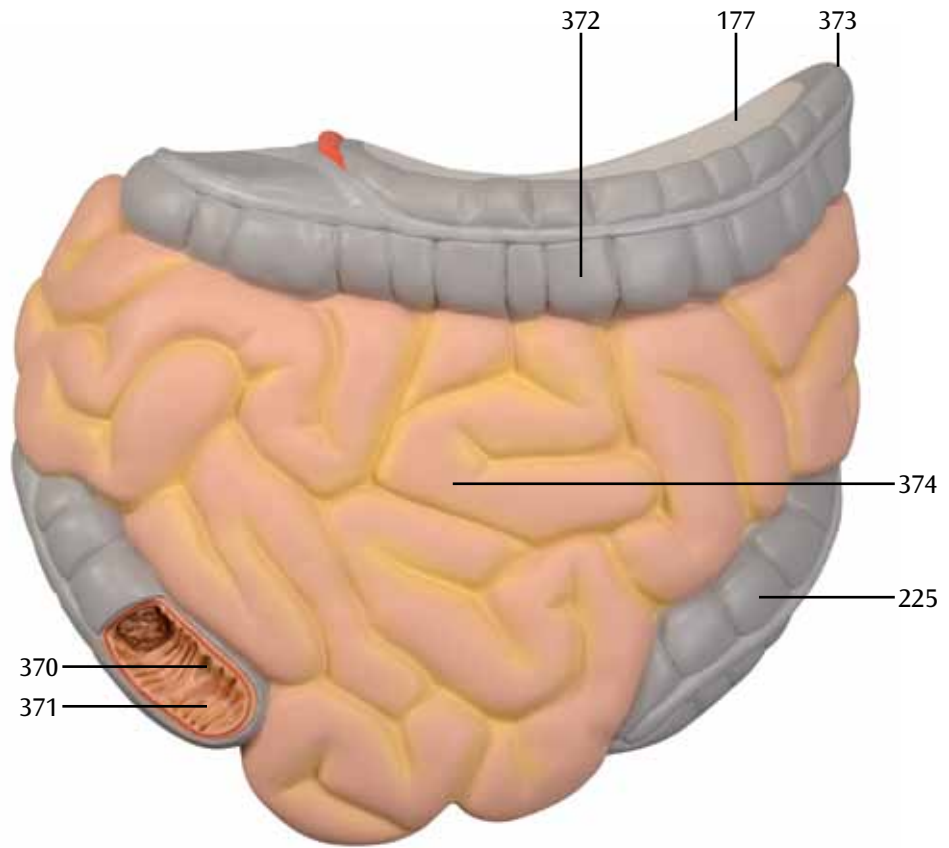


I2

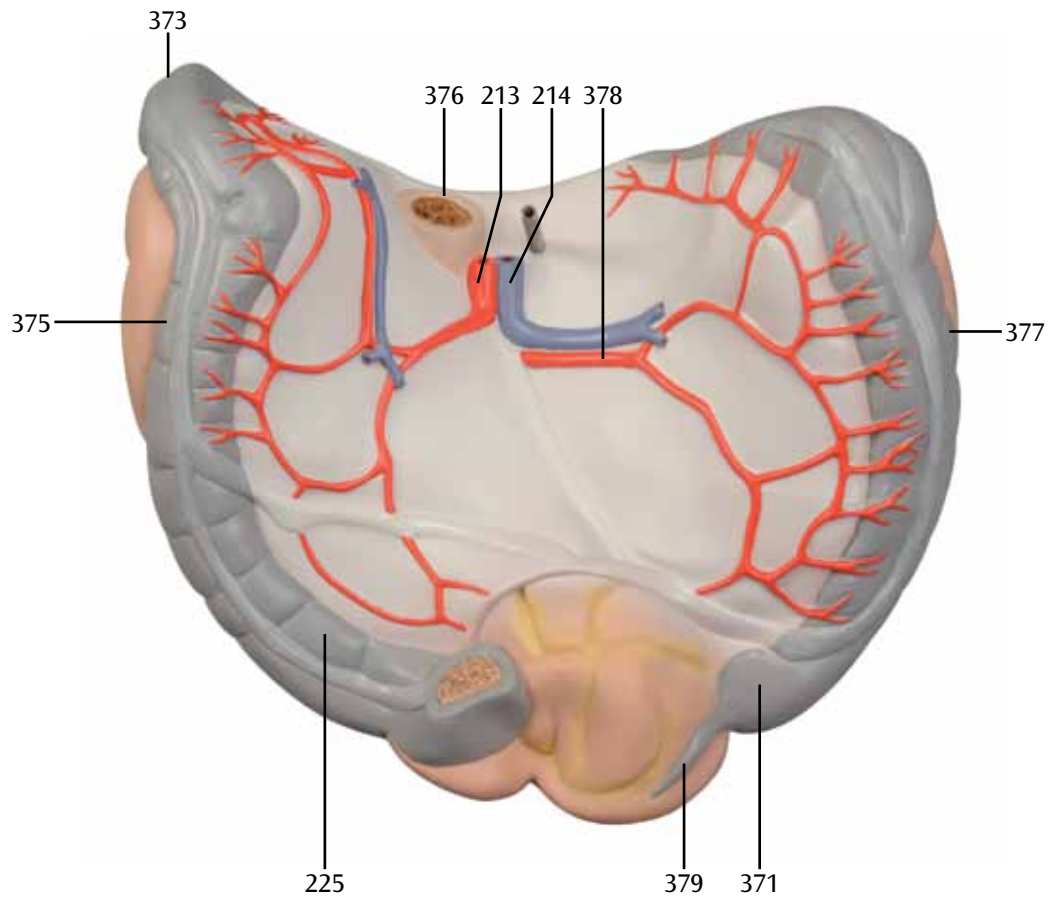




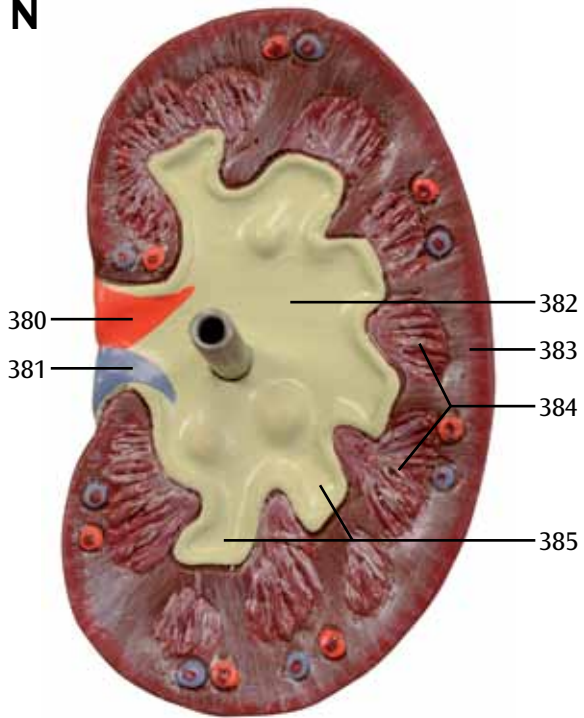
M1



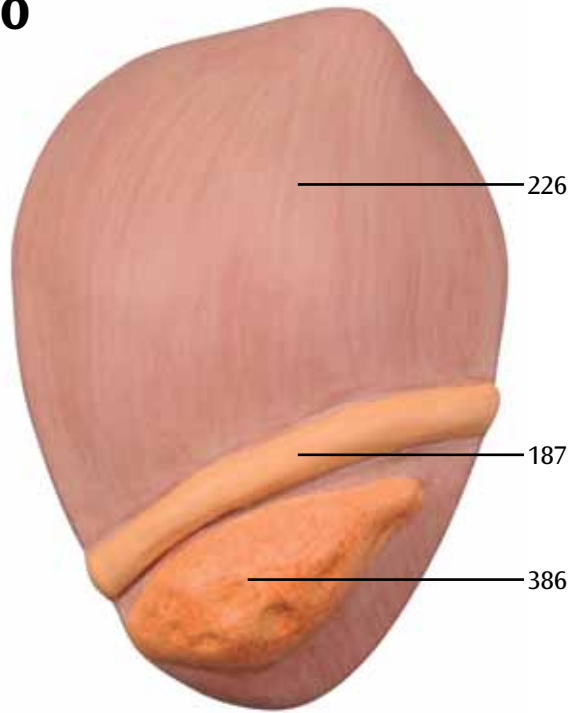
M2



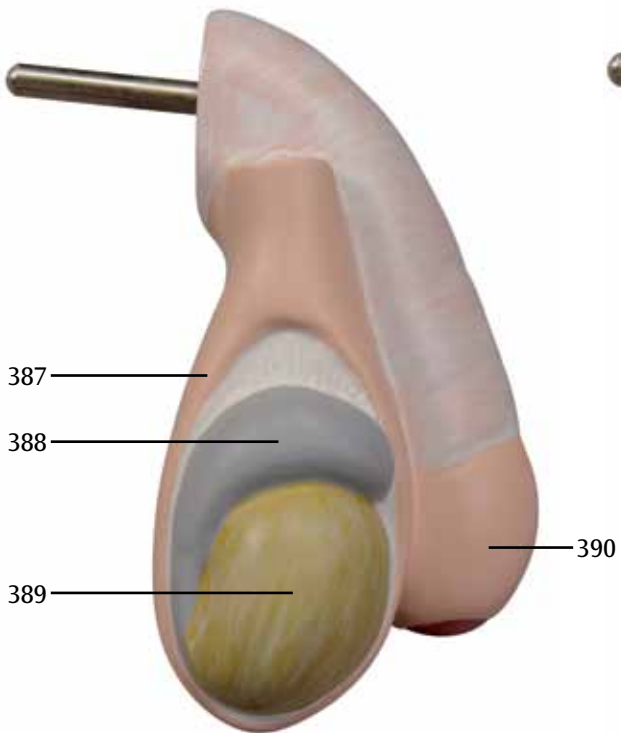
N



O



P1



P2

