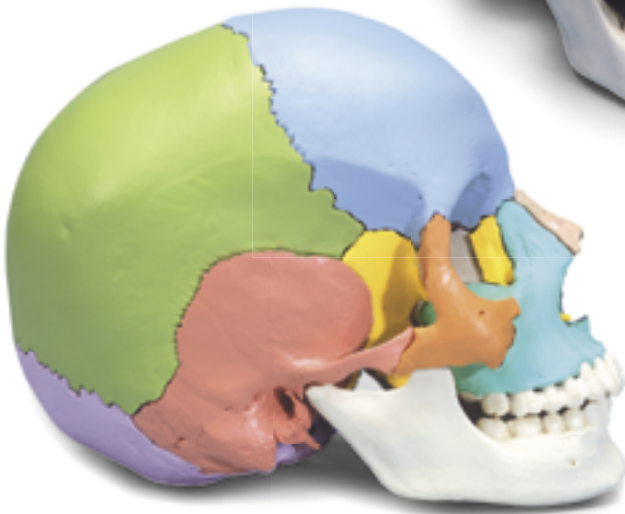




...going one step further



A290

A291



This detailed natural cast of a broken up human skull can be disassembled into 22 individual bones. The skull sutures, depicted in a slightly simplified way, are equipped with inconspicuous, stable connectors used to reassemble the individual bones.

The skull consists of the following individual bones:

- 1 Parietal bone, left
- 2 Parietal bone, right
- 3 Occipital bone
- 4 Temporal bone, right
- 5 Temporal bone, left
- 6 Sphenoid bone
- 7 Frontal bone
- 8 Ethmoid bone
- 9 Vomer bone
- 10 Palatine bone, left
- 11 Palatine bone, right
- 12 Inferior nasal concha, left
- 13 Inferior nasal concha, right
- 14 Upper jaw (maxilla) with teeth, left
- 15 Upper jaw (maxilla) with teeth, right
- 16 Lacrimal bone, left
- 17 Lacrimal bone, right
- 18 Nasal bone, left
- 19 Nasal bone, right
- 20 Zygomatic bone, left
- 21 Zygomatic bone, right
- 22 Lower jaw (mandible) with teeth

To ensure the maximum life of your 3B Scientific® Skull Kit please follow these instructions for maintenance and handling:

- Please ensure that the skull is completely reassembled after each demonstration and stored in an upright position.
- Avoid excessive heat, e.g. prolonged exposure to sun.
- Light soiling can be removed with a mild soap solution. Please use no detergents containing solvents, as this could damage the material.

A290 Skull Kit – Anatomical Version

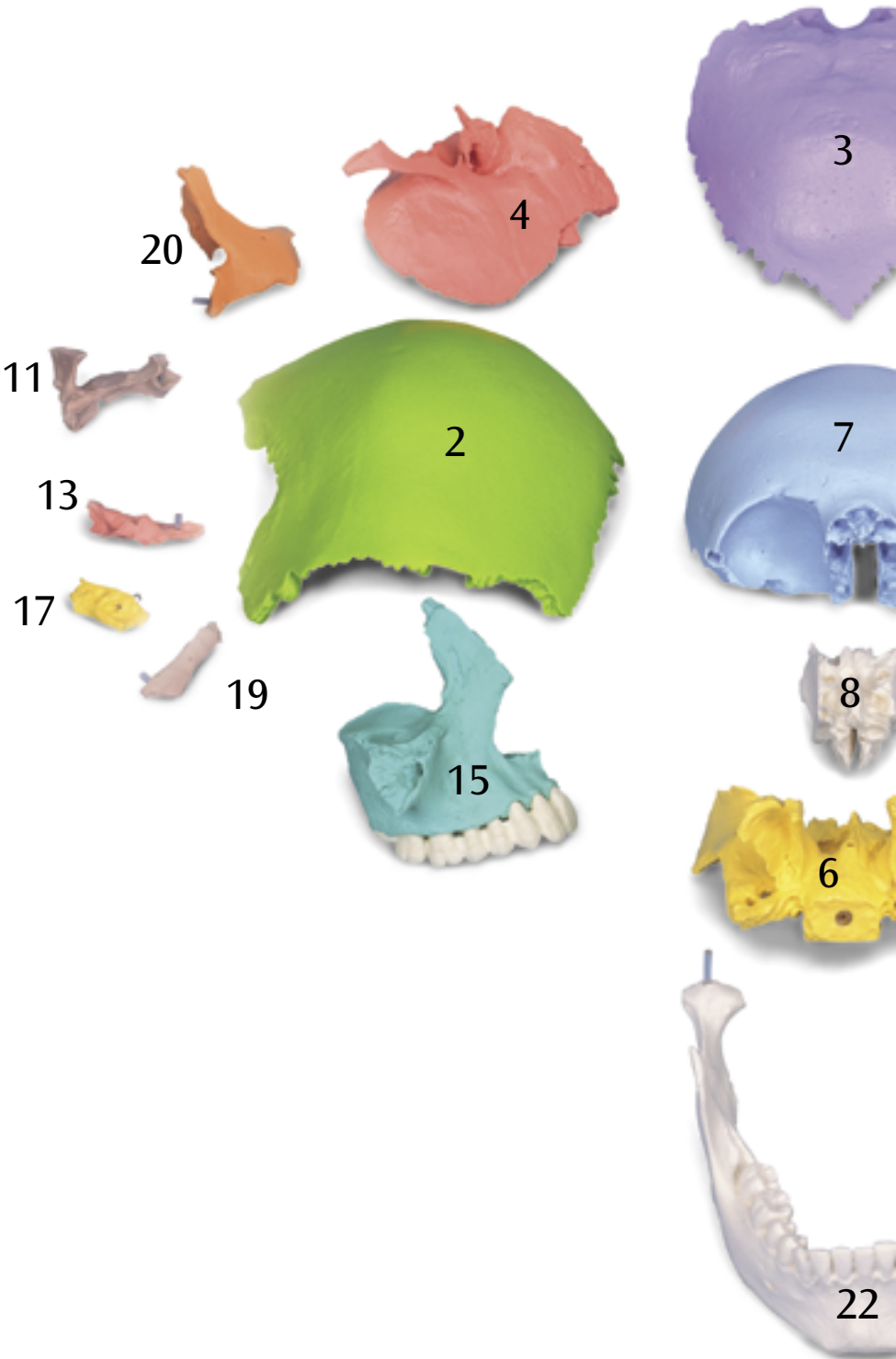
All 22 bones are depicted in their natural bone color.

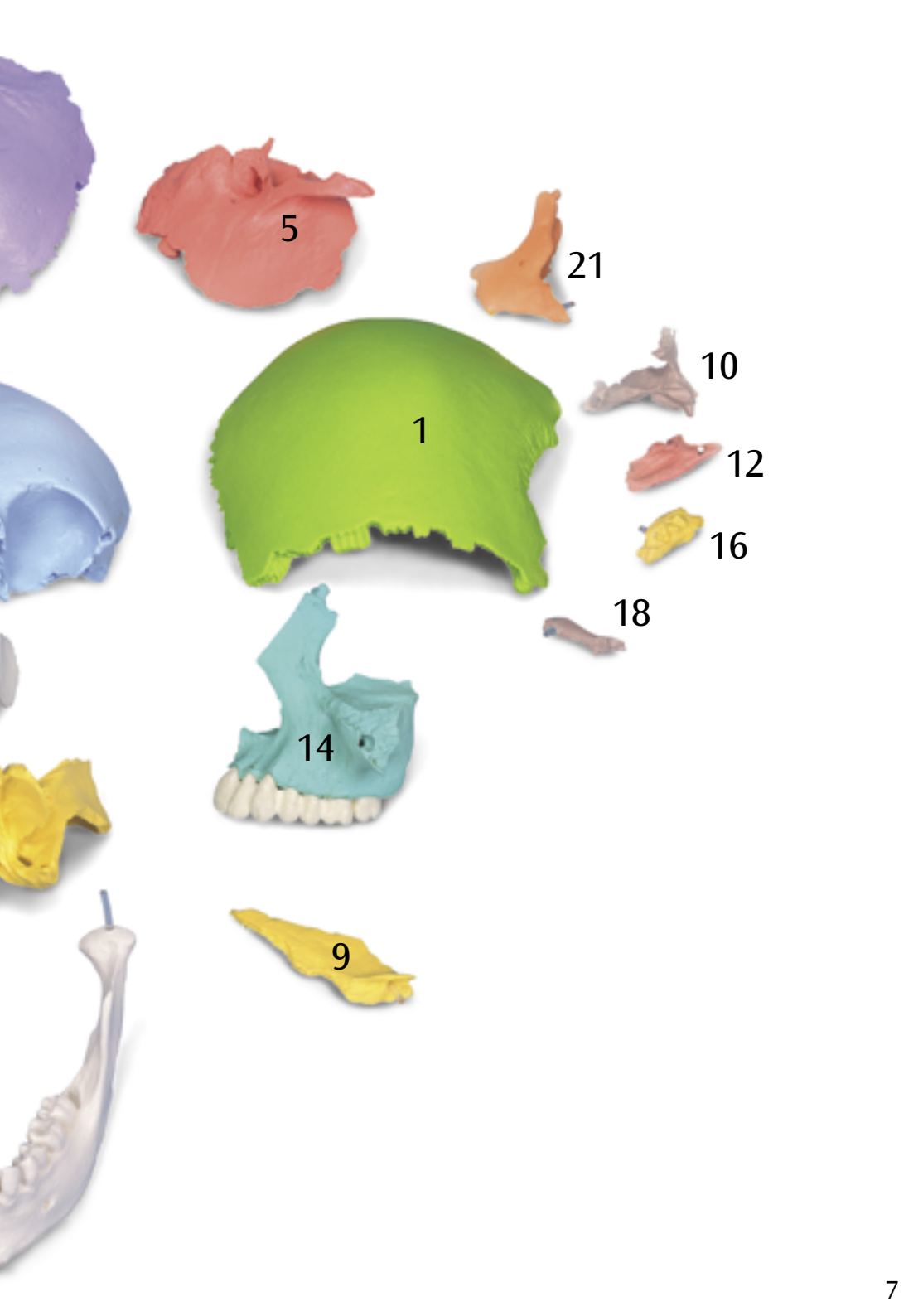
A291 Skull Kit – Didactic Version

The 22 bones are depicted in 9 different didactic colors so that the individual skull bones are easy to distinguish. Each pair of bone plates has the same color.

Assembly and disassembly of the skull

The illustrations on pages 6-15 show the order in which the individual parts of the skull should be assembled. When disassembling, please proceed in the opposite order. On the illustrations, the individual bones are marked with numbers that correspond to the above terminology. This may be helpful especially for the Anatomical Version since this version does not provide identification by color. The arrows indicate the direction in which the skull bones are assembled and disassembled.





5

21

1

10

12

16

18

14

9

