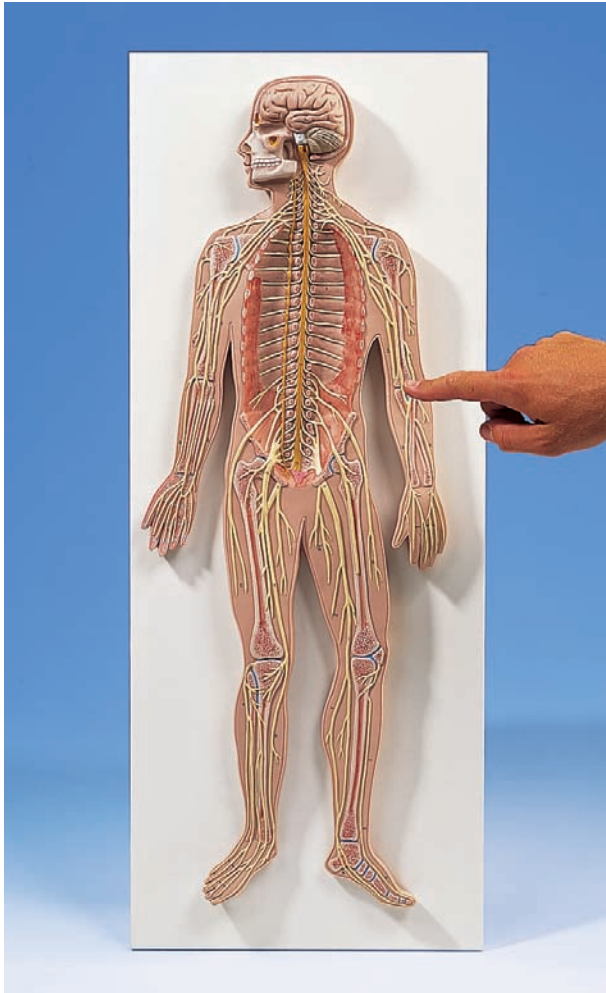




...going one step further



C30

Latin

ENCEPHALON

- 1 Lobus frontalis
- 2 Lobus parietalis
- 3 Lobus occipitalis
- 3a Lobus temporalis
- 4 Cerebellum
- 5 Pons
- 6 Medulla oblongata
- 7 Medulla spinalis

NERVI SPINALES

- 8 Nn. cervicales [C1-C8]
- 9 Nn. thoracici [T1-T12]
- 10 Nn. lumbales [L1-L5]
- 11 Nn. sacrales [S1-S5]
- 12 Conus medullaris
- 13 Cauda equina

- 14 Vesica urinaria

TRUNCUS SYMPATHICUS

- 15 Ganglia cervicalia
- 16 Ganglia thoracica
- 17 Ganglia lumbalia
- 18 Ganglia sacralia

NERVI MEMBRI SUPERII

- 19 Nn. supraclaviculares
- 20 N. axillaris
- 21 N. musculocutaneus
- 22 N. radialis
- 23 N. medianus
- 24 N. ulnaris
- 25 Ramus superficialis n. radialis
- 26 Ramus palmaris n. mediani
- 27 Ramus palmaris n. ulnaris
- 28 Ramus dorsalis n. ulnaris
- 29 N. cutaneus brachii posterior
- 30 Nn. digitales dorsales
- 31 Nn. digitales palmares

NERVI MEMBRI INFERII

- 32 N. ilioinguinalis
- 33 N. cutaneus femoris lateralis
- 34 N. femoralis
- 35 N. ischiadicus
- 36 N. obturatorius
- 37 N. fibularis communis
- 38 N. saphenus
- 39 Ramus infrapatellaris n. saphenus

- 40 N. fibularis profundus
- 41 N. fibularis superficialis
- 42 Nn. digitales dorsales pedis
- 43 Ramus muscularis
- 44 N. tibialis
- 45 N. suralis
- 46 N. plantaris medialis et lateralis
- 47 N. cutaneus dorsalis medialis



Nervous System, 1/2 life-size

English

BRAIN

- 1 Frontal lobe
- 2 Parietal lobe
- 3 Occipital lobe
- 3a Temporal lobe
- 4 Cerebellum
- 5 Pons
- 6 Medulla oblongata
- 7 Spinal cord

- 40 Deep peroneal nerve
- 41 Superficial fibular nerve
- 42 Dorsal digital nerves of foot
- 43 Muscular branch
- 44 Tibial nerve
- 45 Sural nerve
- 46 Medial and lateral plantar nerve
- 47 Medial dorsal cutaneous nerve

SPINAL NERVS

- 8 Cervical nerves [C1-C8]
- 9 Thoracic nerves [T1-T12]
- 10 Lumbar nerves [L1-L5]
- 11 Sacral nerves [S1-S5]
- 12 Medullary cone
- 13 Cauda equina

- 14 Urinary bladder

SYMPATHETIC TRUNK

- 15 Cervical ganglia
- 16 Thoracic ganglia
- 17 Lumbar ganglia
- 18 Sacral ganglia

NERVES of UPER LIMB

- 19 Supraclavicular nerves
- 20 Axillary nerve
- 21 Musculocutaneous nerve
- 22 Radial nerve
- 23 Median nerve
- 24 Ulnar nerve
- 25 Superficial branch of radial nerve
- 26 Palmar branch of median nerve
- 27 Palmar branch of ulnar nerve
- 28 Dorsal branch of ulnar nerve
- 29 Posterior cutaneous nerve of arm
- 30 Dorsal digital nerves
- 31 Palmar digital nerves

NERVES of LOWER LIMB

- 32 Ilioinguinal nerve
- 33 Lateral cutaneous nerve of thigh
- 34 Femoral nerve
- 35 Sciatic nerve
- 36 Obturator nerve
- 37 Common fibular nerve
- 38 Saphenous nerve
- 39 Infrapatellar branch of saphenous nerve

