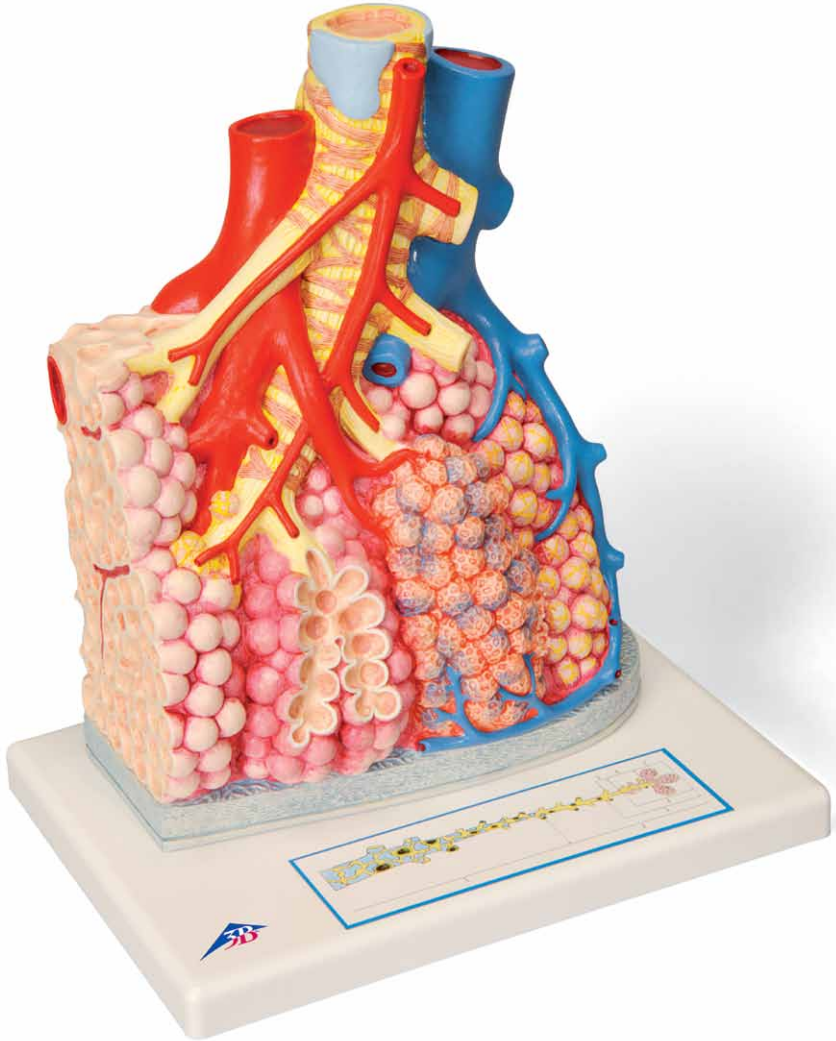




*...going one step further*



**G60**

**Latin**

**A  
B  
C  
D**

- 1 Bronchus segmentalis
- 2 Cartilago bronchialis
- 3 Smooth musculature
- 4 V. pulmonalis, Ramus
- 5 Fibra elastica
- 6 Bronchiolus praeterterminalis
- 7 Bronchiolus terminalis
- 8 Bronchiolus respiratorius
- 9 Alveoli pulmonis
- 10 Ductus alveolaris
- 11 Acinus pulmonalis (Acinus pulmonis, Arbor alveolaris)
- 12 R. bronchialis
- 13 A. pulmonalis, Ramus
- 14 Capillary networks
- 15 Elastic baskets
- 16 Elastic fibers of the visceral Pleura
- 17 Pleura visceralis (Pleura pulmonalis), Tela subserosa
- 18 Pleura visceralis (Pleura pulmonalis), Tunica serosa
- 19 Septum interlobulare
- 20 Alveolar epithelium
- 21 Type II alveolar cell
- 22 Capillaries
- 23 Type I alveolar cell
- 24 Smooth muscle cells
- 25 Alveolar macrophages

**E**

- 1 Bronchus segmentalis
- 2 Bronchioli
- 3 Lobulus pulmonis
- 4 Acinus pulmonalis (Acinus pulmonis, Arbor alveolaris)
- 5 Bronchiolus terminales
- 6 Bronchiolus respiratorius
- 7 Alveoli pulmonis

# Pulmonary lobule with surrounding blood vessels

English

The model shows the terminal branch of the bronchial tree (Terminal bronchiolus) with its further bifurcations, the associated pulmonary alveoli, as well as the surrounding blood vessels and their capillary networks in 130-fold magnification. On the right side of the model, the pulmonary lobule is cut in order to facilitate view of the pulmonary tissue structure. The left side of the model shows a section of connective tissue located between adjacent pulmonary lobules. To better understand the gas exchange, a single opened pulmonary alveolus with the surrounding capillary network is demonstrated at the back of the model in approx. 1000-fold magnification. A graphic presentation on the base of the model shows the structure of the air passages located in the lung up to the pulmonary alveoli.

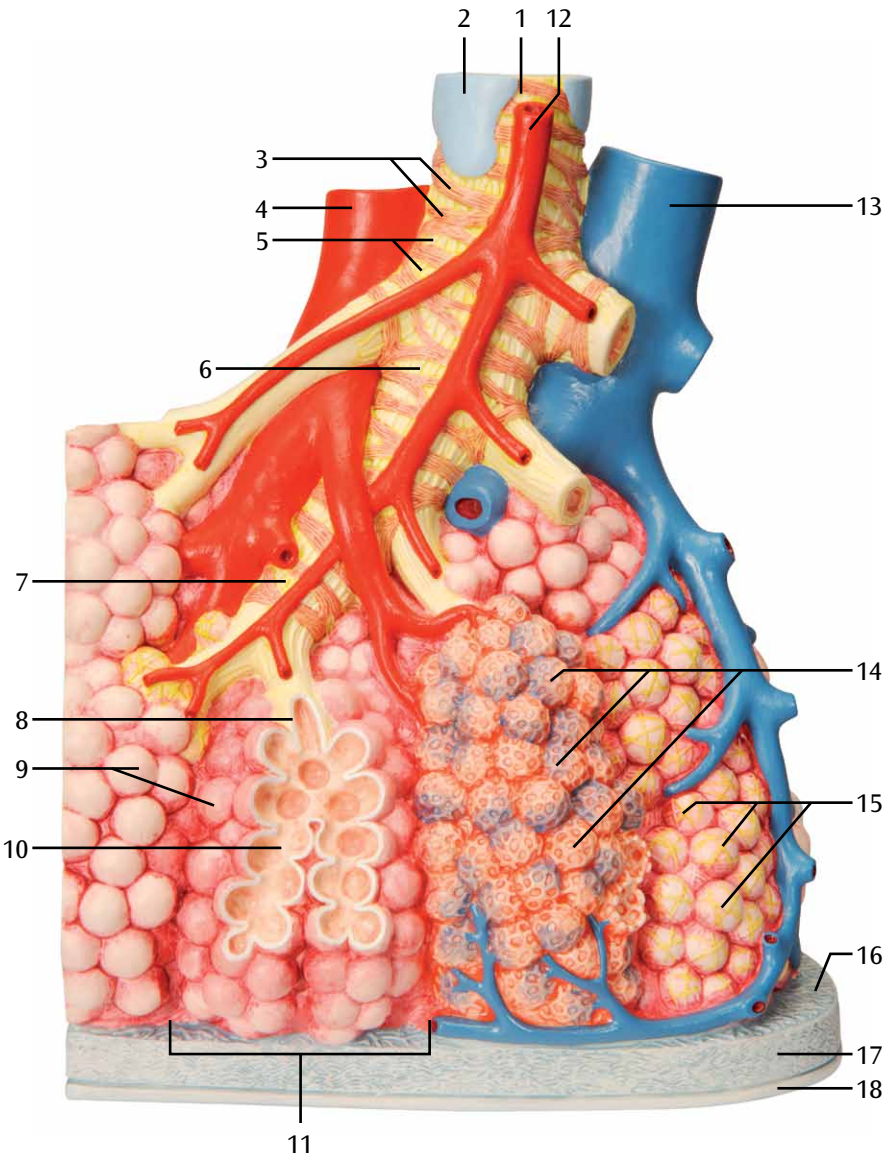
- A Right anterior view**
- B View from the left, sagittal section through several alveolar trees**
- C View from the right**
- D Back: Pulmonary alveoli, greatly enlarged, inner view**

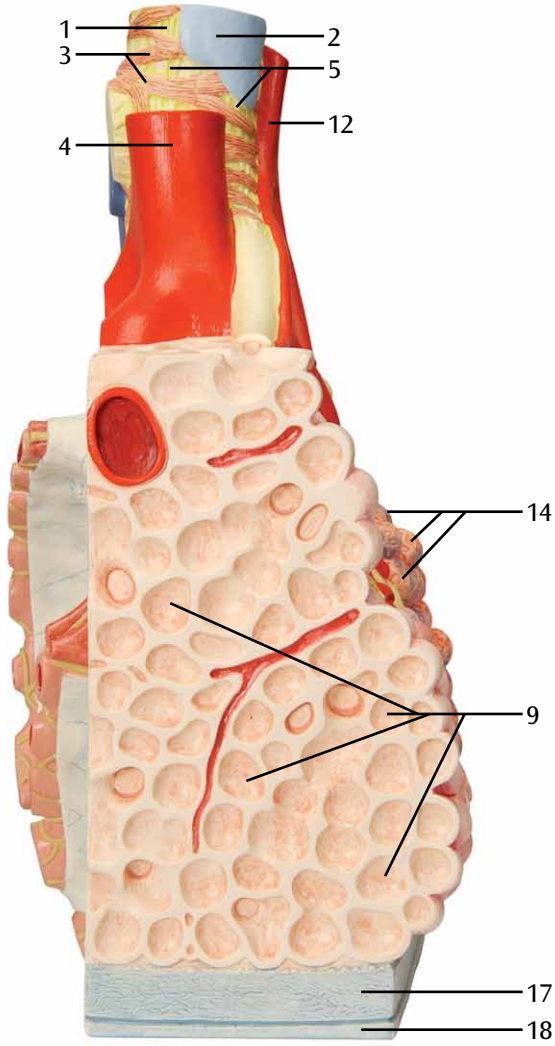
- 1 Segmental bronchus
- 2 Bronchial cartilage
- 3 Smooth musculature
- 4 Pulmonary vein, branch
- 5 Elastic fibers
- 6 Pre-terminal bronchiolus
- 7 Terminal bronchiolus
- 8 Respiratory bronchiolus
- 9 Pulmonary alveoli
- 10 Alveolar duct
- 11 Pulmonary acinus
- 12 Bronchial branch
- 13 Pulmonary artery, branch
- 14 Capillary networks
- 15 Elastic baskets
- 16 Elastic fibers of the visceral Pleura
- 17 Visceral pleura (Pulmonary pleura), subserosa (subserous layer)
- 18 Visceral pleura (Pulmonary pleura), serosa (serous coat)
- 19 Interlobular septum
- 20 Alveolar epithelium
- 21 Type II alveolar cell
- 22 Capillaries
- 23 Type I alveolar cell
- 24 Smooth muscle cells
- 25 Alveolar macrophages

## **E**

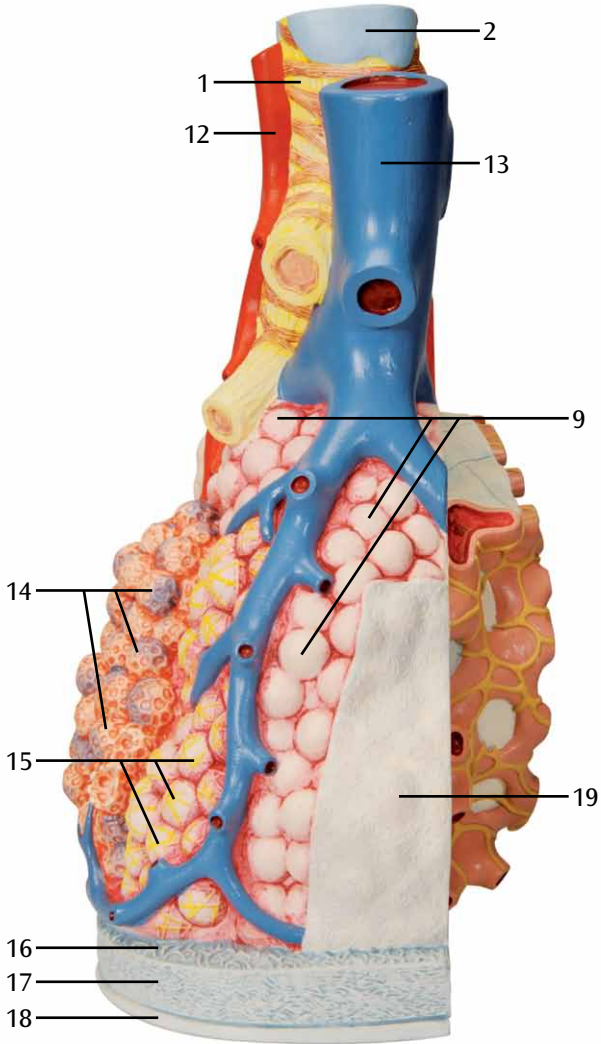
- 1 Segmental bronchus
- 2 Bronchioles
- 3 Pulmonary lobule
- 4 Pulmonary acinus
- 5 Terminal bronchiolus
- 6 Respiratory bronchiolus
- 7 Pulmonary alveoli

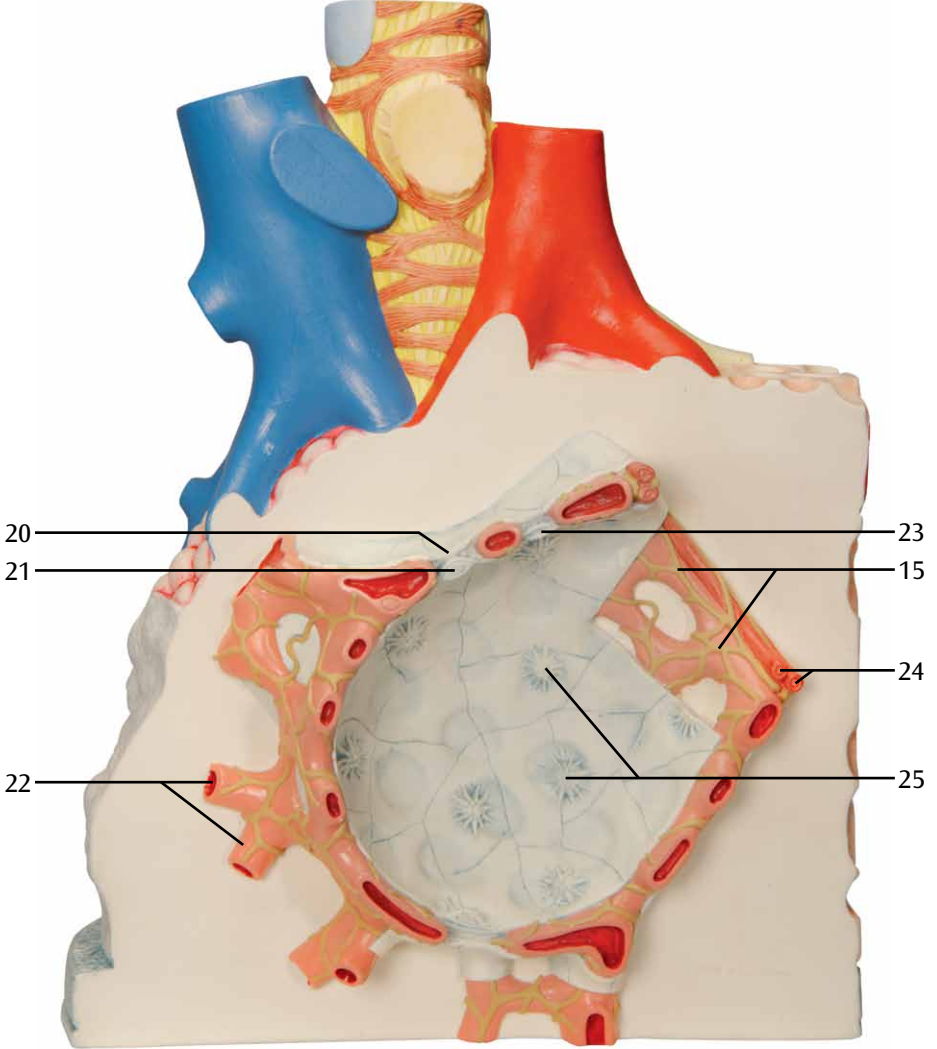
A





C





# E

