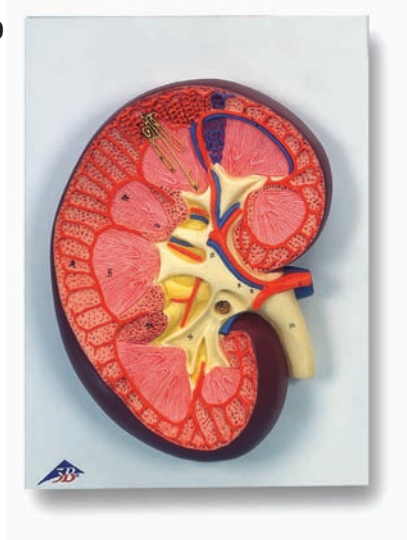


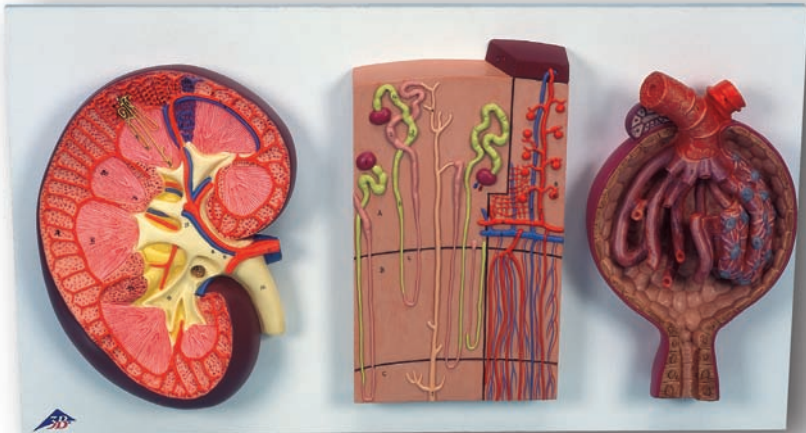


...going one step further

K10



K11



K10, K11

Latin

K10

- A Cortex renalis
- B Medulla renalis
- 1 V. renalis
- 2 A. renalis
- 3 Vv. arcuatae
- 4 Aa. arcuatae
- 5 Plexus vasculosus
- 6 V. corticalis radiata [V. interlobularis]
- 7 A. corticalis radiata [A. interlobularis]
- 8 Arteriola glomerularis afferens
- 10 Ureter
- 11 Pelvis renalis
- 12 Calices renales majores
- 13 Foramina papillaria
- 14 Papillae renales
- 15 Ductus papillaris
- 16 Tubulus conjugens
- 17 Tubulus attenuatus
- 18 Tubulus rectus proximalis
- 19 Corpusculum renalis
- 20 Pyramides renales
- 21 Calices renales minores
- 22 Columnae renales

K10/1

- A Cortex renalis
- B Medulla renalis, zona externa
- C Medulla renalis, zona interna
- 1 Corpusculum renalis
- 2 Tubulus proximalis
- a Tubulus contortus proximalis
- b Tubulus rectus proximalis
- c Tubulus attenuatus
- 3 Tubulus distalis
- 4 Tubulus colligentis recti
- 5 Ductus papillaris
- 6 A. et V. arcuata
- 7 A. et V. corticalis radiata [A. et V. interlobularis]
- 8 Arteriola glomerularis afferens
- 9 Arteriola glomerularis efferens
- 10 Glomerulus

K10/2

- 1 Arteriola glomerularis afferens
- 2 Glomerulus
- 3 Arteriola glomerularis efferens
- 4 Podocyti
- 5 Capsula glomerularis
- 6 Tubulus proximalis
- 7 Tubulus distalis

K10 Kidney Section, 3 times full-size

K11 Kidney Section, Nephrons, Blood Vessels and Renal Corpuscle

English

K10 Kidney Section, 3 times full-size

- A Renal cortex
- B Renal medulla
- 1 Renal vein
- 2 Renal artery
- 3 Arcuate veins
- 4 Arcuate arteries
- 5 Vascular plexus
- 6 Cortical radiate vein [Interlobular vein]
- 7 Cortical radiate artery [Interlobular artery]
- 8 Afferent glomerular arteriole
- 10 Ureter
- 11 Renal pelvis
- 12 Major calices
- 13 Openings of papillary duct
- 14 Renale papillas
- 15 Papillary duct
- 16 Connecting Tubulus
- 17 HENLE's loop
- 18 Proximal part of straight renal tubulus
- 19 Renal corpuscle
- 20 Renal pyramids
- 21 Minor renal calices
- 22 Renal columns

- 9 Efferent glomerular arteriole
- 10 Glomerulus

K10/2 Malpighian Corpuscle of Kidney, 700 times full-size

- 1 Afferent glomerular arteriole
- 2 Glomerulus
- 3 Efferent glomerular arteriole
- 4 Podocyte
- 5 Bowman's capsule
- 6 Proximal tubule
- 7 Distal tubule

K10/1 Nephrons and Blood Vessels, 120 times full-size

- A Renal cortex
- B Renal medulla, outer zone
- C Renal medulla, inner zone
- 1 Renal corpuscle
- 2 Proximal tubule
 - a Proximal convolution
 - b Proximal straight tubule
 - c HENLE's loop
- 3 Distal tubule
- 4 Collecting tubule
- 5 Papillary duct
- 6 Arcuate artery and vein
- 7 Cortical radiate artery and vein
[Interlobular artery and vein]
- 8 Afferent glomerular arteriole