



...going one step further



L56

Latin

- A Milk-giving right breast and chest wall, front view, medially divided, representation of the externally visible changes for breast gland inflammation (mastitis) on the inner half**
- B Milk-giving right breast and chest wall, external half, cut surface**
- C Milk-giving right breast and chest wall, inner half, cut surface, representation of breast gland inflammation (mastitis)**
- D Non-milk giving breast and chest wall, front view, two sagittal cuts**
- E Non-milk-giving breast and chest wall; external half, external view, skin windowed to illustrate the regional lymph nodes**
- F Non-milk-giving left breast and chest wall, external half, cut surface**
- G Non-milk-giving left breast and chest wall, middle section, external cut surface, representation of a benign tumour (fibroadenoma) and two cysts**
- H Non-milk-giving left breast and chest wall, middle section, inner cut surface, representation of a pathological proliferation of the breast gland connective tissue (mastopathy)**
- I Non-milk-giving left breast and chest wall, inner section, cut surface, representation of two malignant tumours (breast cancer)**

- 1 Tubercula areolae
- 2 Areola mammae
- 3 Papilla mammaria
- 4 External signs of breast gland inflammation (Mastitis)
- 5 Fat tissue
- 6 Glandulae mammariae
- 7 Sinus lactiferi
- 8 Ductus lactiferi
- 9 Costae
- 10 Fascia pectoralis
- 11 M. pectoralis major
- 12 Mm. intercostales
- 13 Pulmo dexter
- 14 Pleura parietalis, Pars costalis
- 15 Pleura visceralis (Pleura pulmonalis)
- 16 Inflammatio (Mastitis)
- 17 Nodi lymphoidei axillares, Nodi pectorales (Nodi anteriores)
- 18 Mamma
- 19 Ligamenta suspensoria mammaria (Retinaculum cutis mammae)
- 20 Pulmo sinister
- 21 Benign tumor (fibroadenoma)
- 22 Cystes
- 23 Proliferation of connective tissue (mastopathy)
- 24 Malignant tumors (breast cancer)

Model of female breast

English

L56 female breast and chest wall: milk-giving right breast with representation of an inflammation (mastitis) and non-milk-giving left breast with representation of various diseases

The model consists of a milk-giving female right breast with the surrounding chest wall area and a non-milk-giving female left breast with the surrounding chest wall area. Both parts of the model have a sagittal cut. The cut surfaces show the tissue of the breast gland as well as the deeper-lying anatomical structures such as the muscles, ribs, costal pleura, pulmonary pleura and lungs. A breast gland inflammation (mastitis) is represented on the right breast and various other diseases on the left breast.

The right breast and chest wall are separated into two halves by a sagittal cut in the mammary line and these are held together by magnets. The cut area of the right half shows healthy breast tissue while the cut area of the left half shows the changes to the breast gland when inflamed (mastitis). The exterior of this half shows the associated pathological changes that are visible from the exterior.

The left breast and chest wall are divided into three parts by a sagittal cut in the mammary line and an additional internal sagittal cut next to the areola and these are held together by magnets.

At the external part of the breast, the skin of the breast is windowed to view the regional lymph nodes. The cut surface of this half show the healthy anatomical structures. The cut surfaces of the middle breast cut show the various diseases of the breast gland. A benign tumour (fibroadenoma) and 2 cysts are represented on the external cut surface. The inner cut surface shows a pathological proliferation of the breast connective tissue (mastopathy).

Two malignant tumours are represented in the breast gland on the cut surface of the inner part of the breast. One of these has extended into the chest wall.

L56 A

Milk-giving female right breast with representation of inflammation (mastitis)

The model shows a female right breast and the surrounding chest wall area. A sagittal cut in the mammary line divides the model into two halves. These are held together with magnets. The cut surfaces of both halves of the model show the tissue of the breast gland as well as the deeper-lying anatomical structures such as the muscles, ribs, costal pleura, pulmonary pleura and lungs. The cut area of the right half shows healthy breast tissue while the cut area of the left half shows the changes to the breast gland when inflamed (mastitis). The exterior of these two halves of the model shows the associated pathological changes that are visible from the exterior.

L56 B

Non-milk-giving female left breast with representation of various diseases

The model shows a non-milk-giving female left breast and the surrounding chest wall area. A sagittal cut in the mammary line and an additional internal sagittal cut next to the areola divides the model into three parts. These are held together with magnets. All cut surfaces of the model parts show the tissue of the breast gland as well as the deeper-lying anatomical structures such as the muscles, ribs, costal pleura, pulmonary pleura and lungs.

At the outer part of the model, the skin of the breast is windowed to view the regional lymph nodes. The cut surface of this half of the breast shows the healthy anatomical structures.

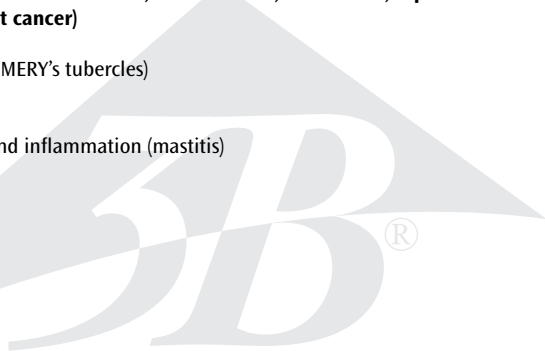
The cut surfaces of the middle cut of the breast show the various diseases of the breast gland. A benign tumour (fibroadenoma) and 2 cysts are represented on the external cut surface. The inner cut surface shows a pathological proliferation of the breast connective tissue (mastopathy).

Two malignant tumours are shown in the breast gland on the cut surface of the inner part of the model. One of these has extended into the chest wall.

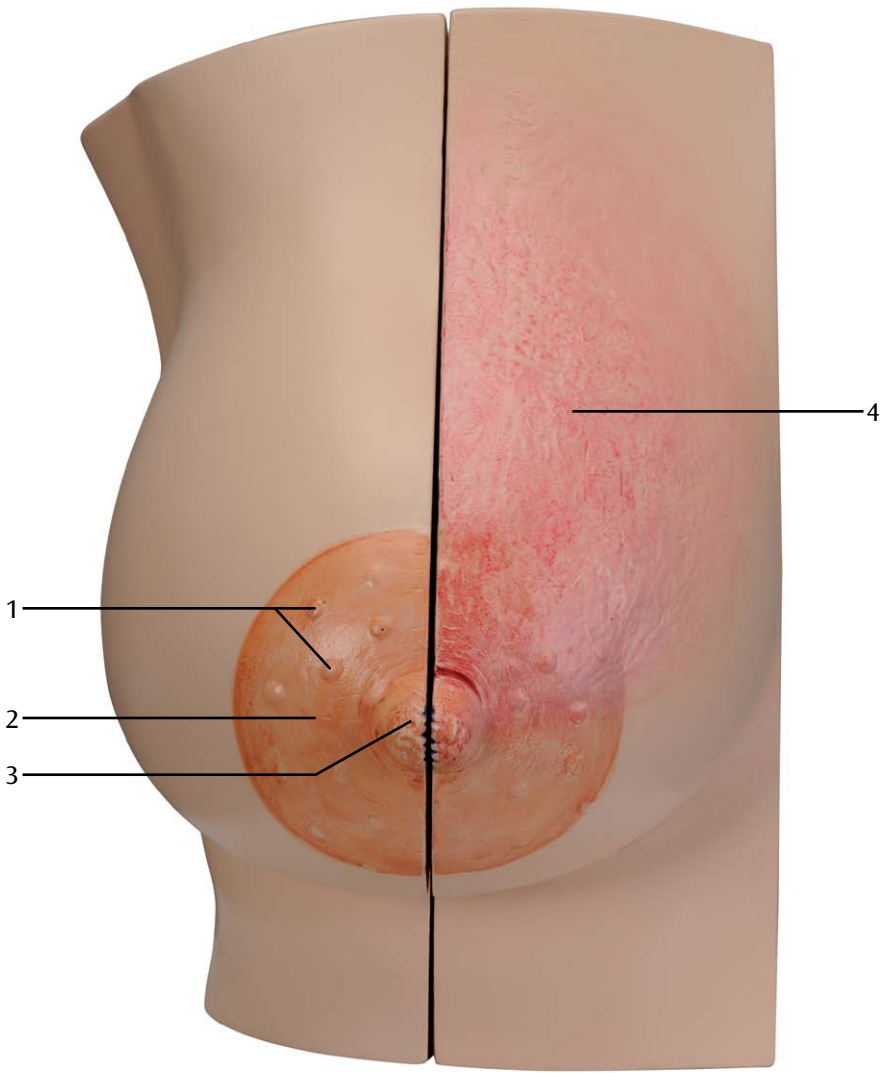
Model of female breast

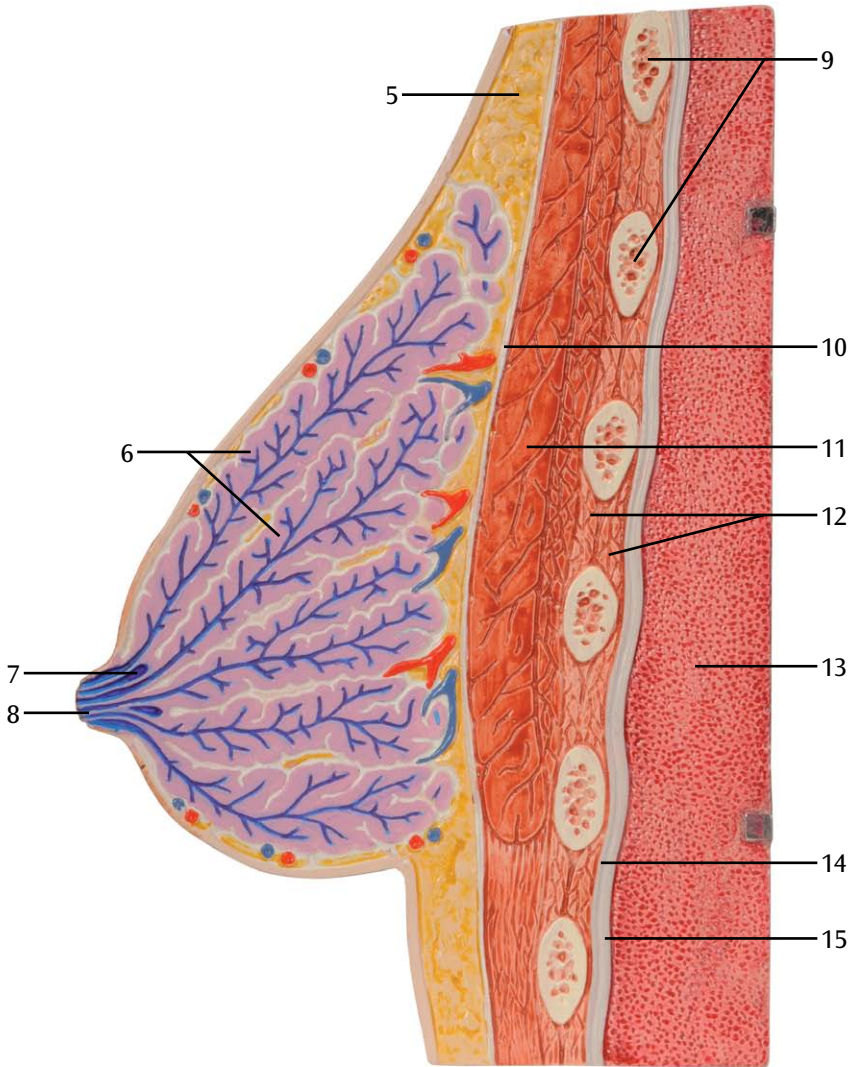
- A Milk-giving right breast and chest wall, front view, medially divided, representation of the externally visible changes for breast gland inflammation (mastitis) on the inner half**
- B Milk-giving right breast and chest wall, external half, cut surface**
- C Milk-giving right breast and chest wall, inner half, cut surface, representation of breast gland inflammation (mastitis)**
- D Non-milk giving left breast and chest wall, front view, two sagittal cuts**
- E Non-milk-giving breast and chest wall; external half, external view, skin windowed to illustrate the regional lymph nodes**
- F Non-milk-giving left breast and chest wall, external half, cut surface**
- G Non-milk-giving left breast and chest wall, middle section, external cut surface, representation of a benign tumour (fibroadenoma) and two cysts**
- H Non-milk-giving left breast and chest wall, middle section, inner cut surface, representation of a pathological proliferation of the breast gland connective tissue (mastopathy)**
- I Non-milk-giving left breast and chest wall, inner section, cut surface, representation of two malignant tumours (breast cancer)**

- 1 Areolar tubercles (MONTGOMERY's tubercles)
- 2 Areola
- 3 Nipple
- 4 External signs of breast gland inflammation (mastitis)
- 5 Fat tissue
- 6 Mammary glands
- 7 Lactiferous sinus
- 8 Lactiferous duct
- 9 Ribs
- 10 Pectoral fascia
- 11 Pectoralis major
- 12 Intercostal muscles
- 13 Right lung
- 14 Parietal pleura, costal part
- 15 Visceral pleura (Pulmonary pleura)
- 16 Inflammation (mastitis)
- 17 Axillary lymph nodes, pectoral nodes (anterior nodes)
- 18 Breast
- 19 Suspensory ligaments of breast (Suspensory retinaculum of breast)
- 20 Left lung
- 21 Benign tumor (fibroadenoma)
- 22 Cysts
- 23 Proliferation of connective tissue (mastopathy)
- 24 Malignant tumors (breast cancer)

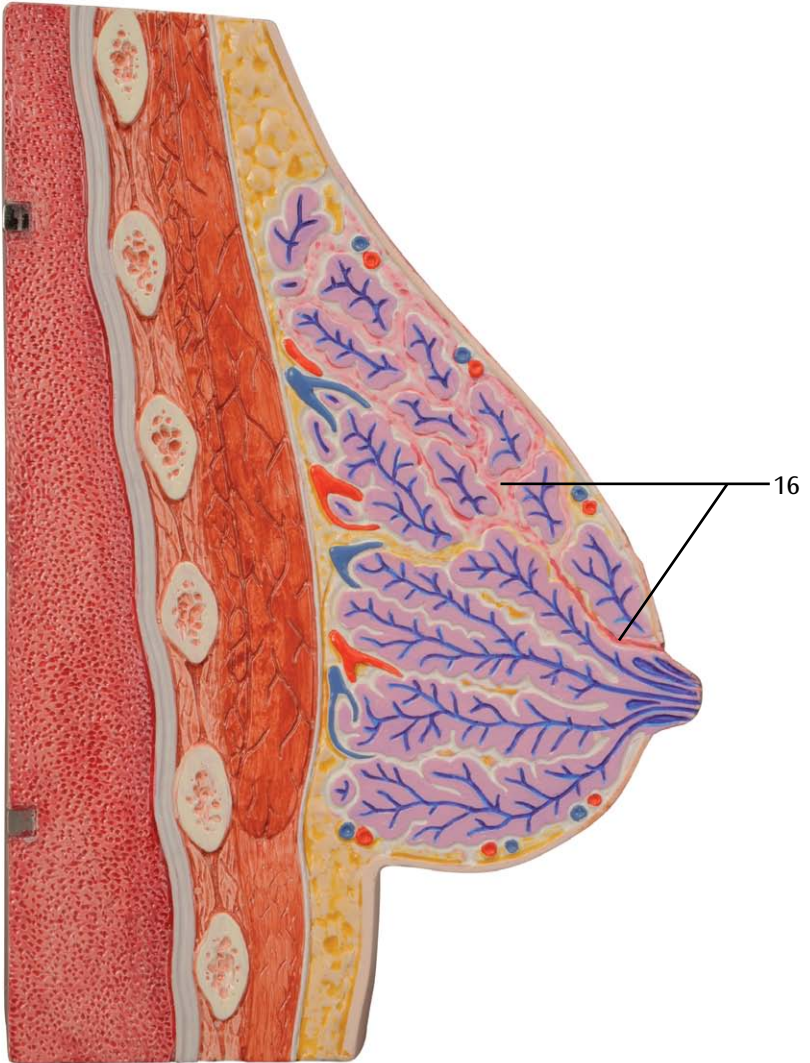


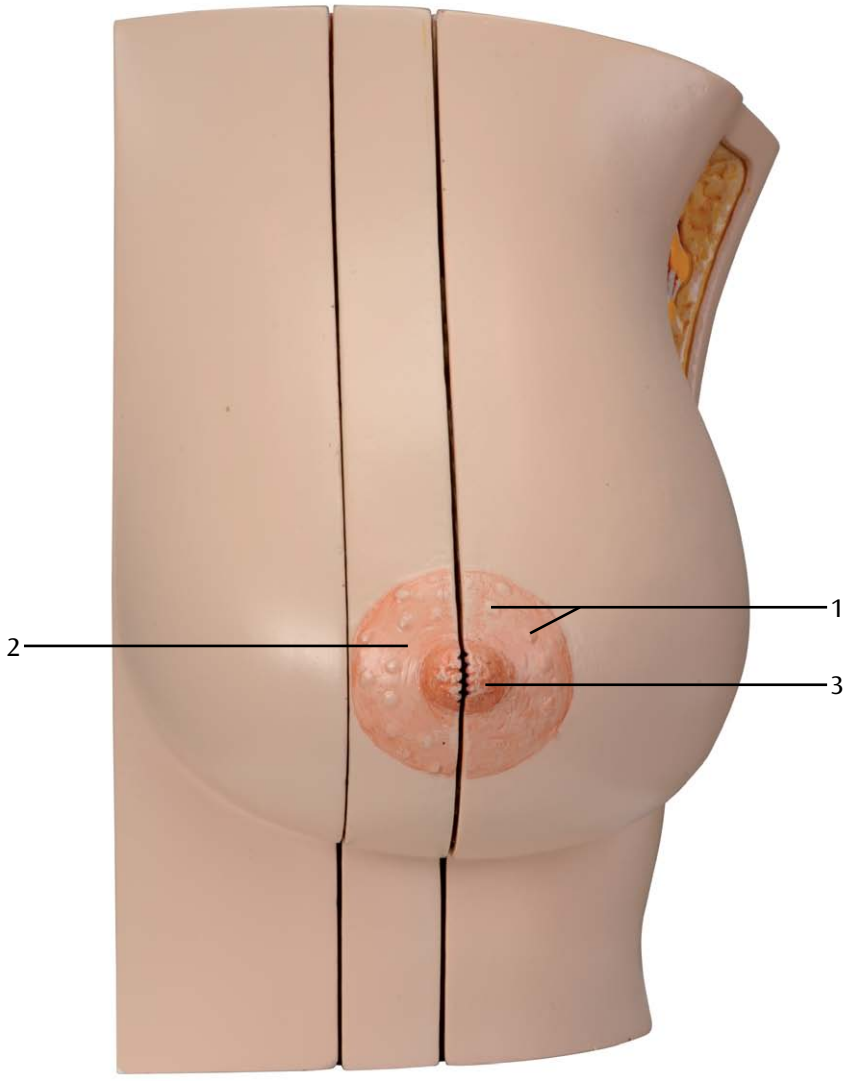
A



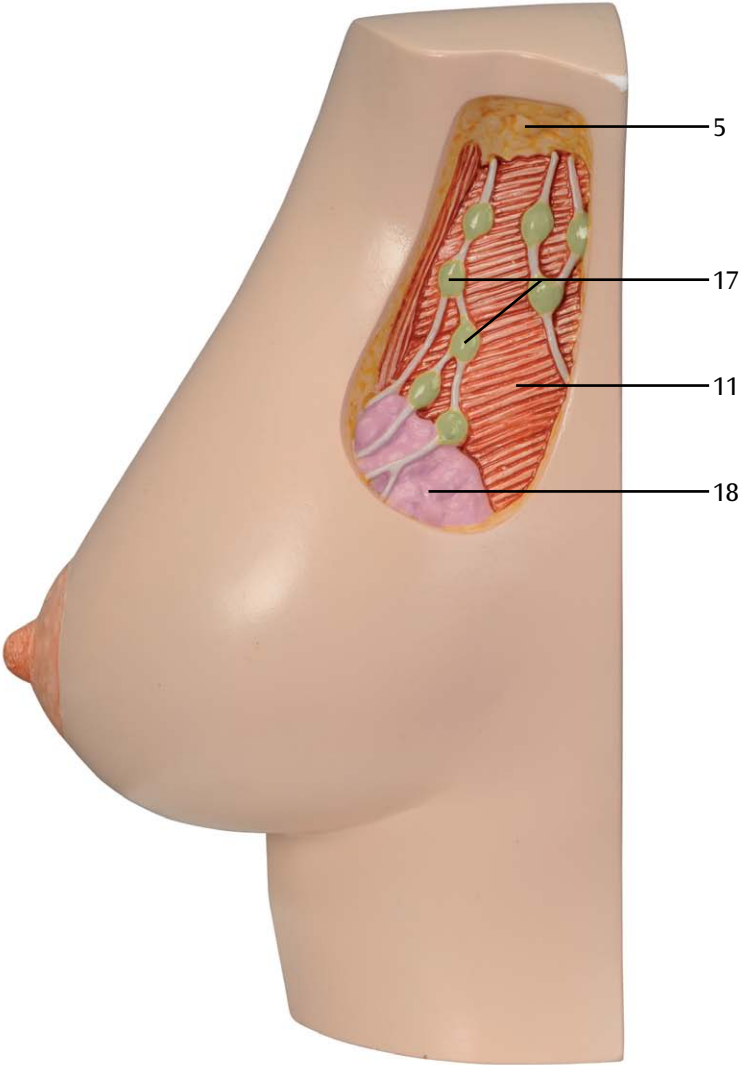


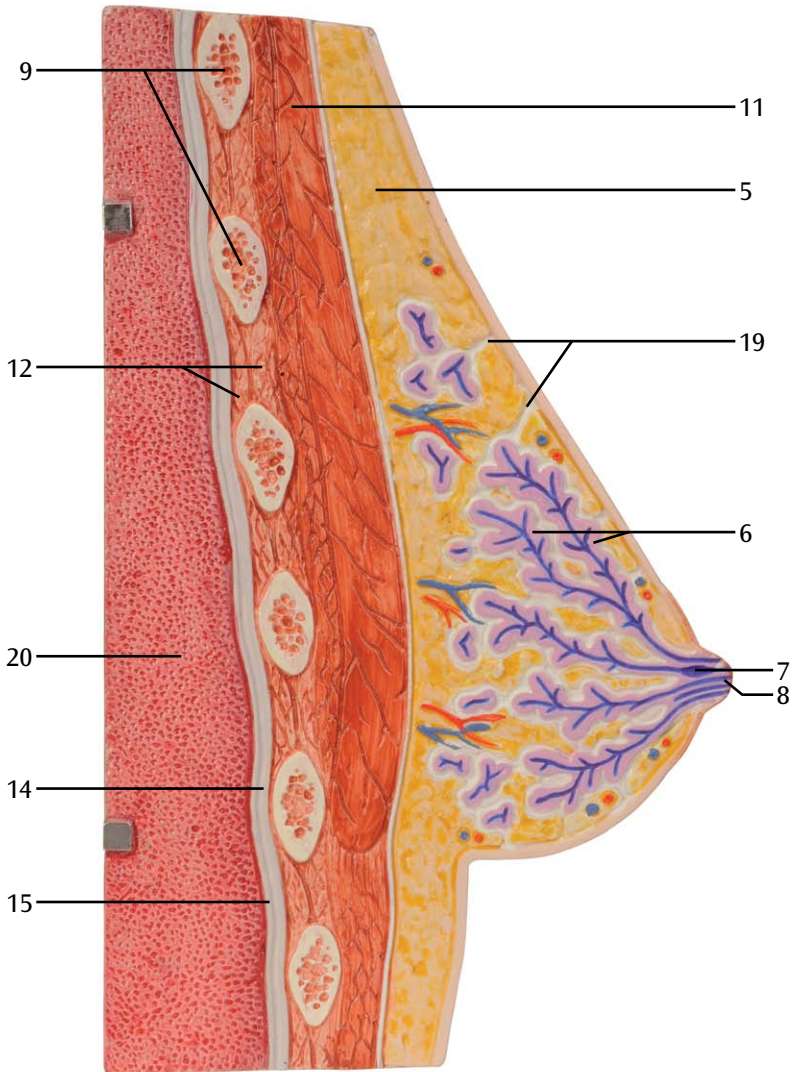
C





E





G

