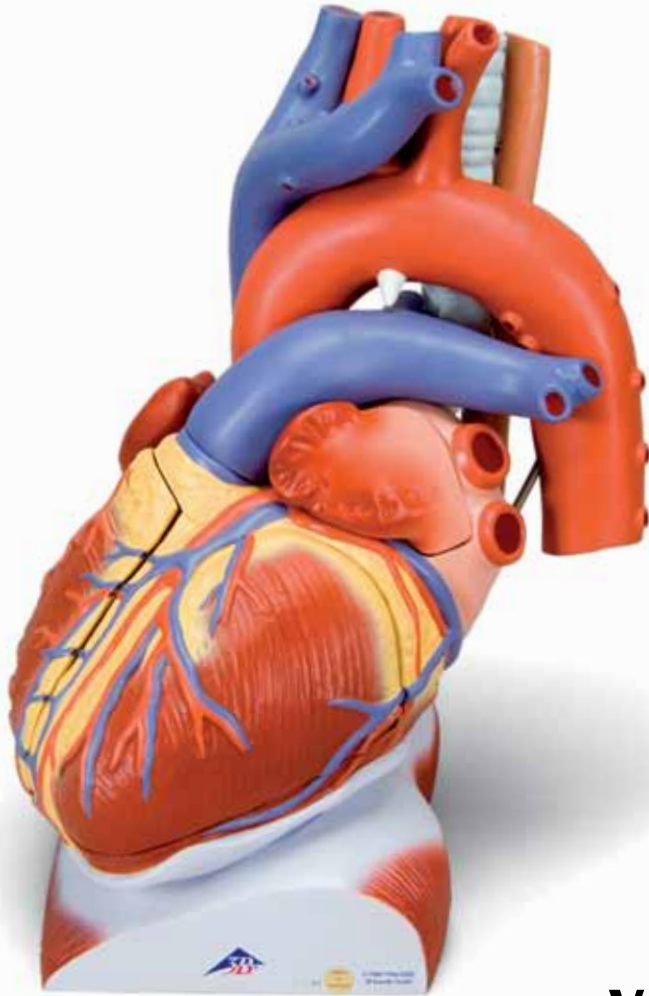




...going one step further



VD251

(1008547)

Latin

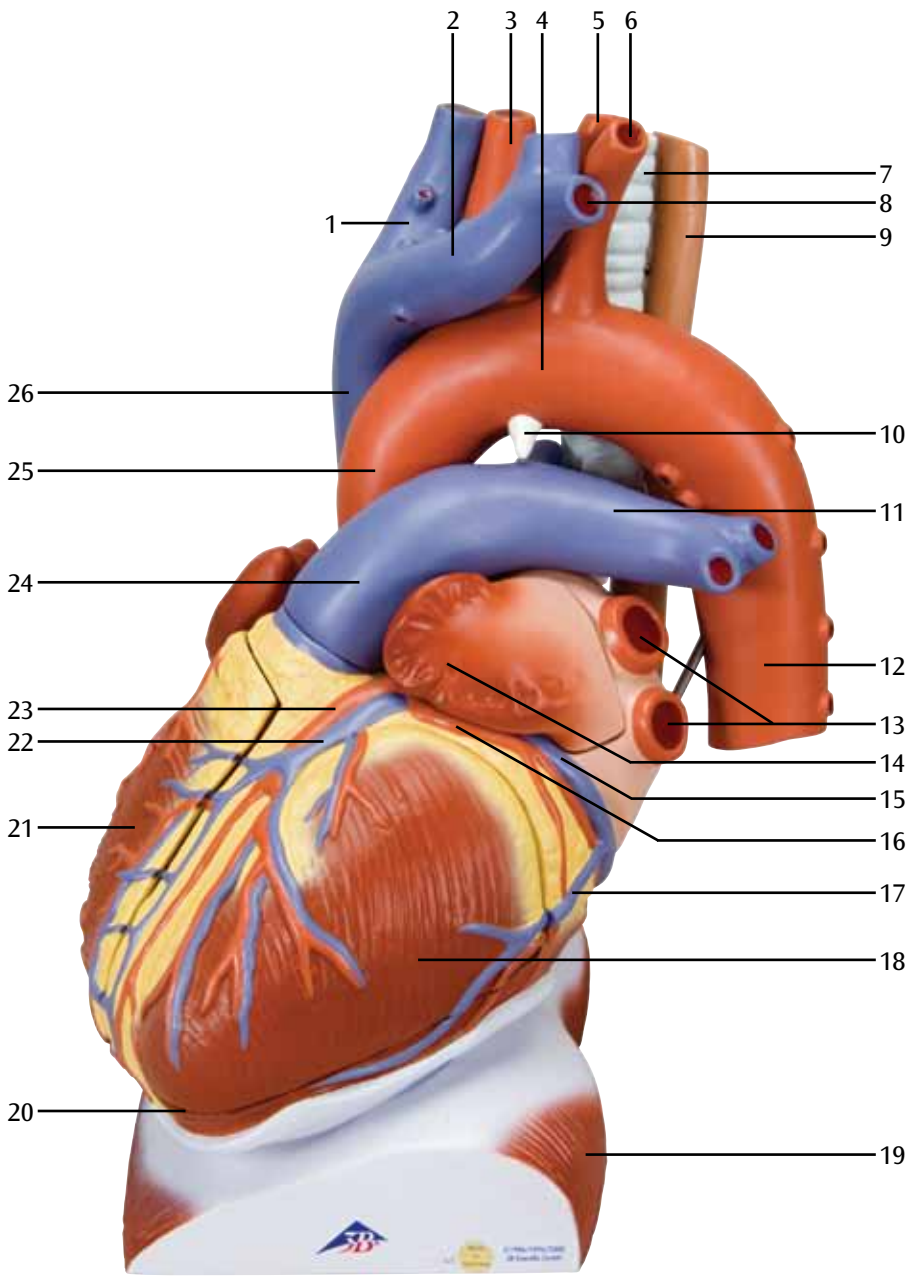
- 1 V. brachiocephalica dextra
- 2 V. brachiocephalica sinistra
- 3 A. carotis communis dextra
- 4 Arcus aortae
- 5 A. carotis communis sinistra
- 6 A. subclavia sinistra
- 7 Trachea
- 8 V. subclavia sinistra
- 9 Oesophagus
- 10 Lig. arteriosum (BOTALLI)
- 11 A. pulmonalis sinistra
- 12 Pars descendens aortae
- 13 Vv. pulmonales sinistrae
- 14 Auricula sinistra
- 15 V. cardiaca magna
- 16 R. circumflexus a. coronariae sinistrae
- 17 V. ventriculi sinistri posterior
- 18 Ventriculus sinister
- 19 Diaphragma
- 20 Apex cordis
- 21 Ventriculus dexter
- 22 V. interventricularis anterior
- 23 R. interventricularis anterior a. coronariae sinistrae
- 24 Truncus pulmonalis
- 25 Pars ascendens aortae
- 26 V. cava superior
- 27 Chordae tendinea (Valva atrioventricularis sinistra [Valva mitralis])
- 28 Mm. papillares
- 29 Vv. pulmonales dextrae
- 30 Atrium sinistrum
- 31 A. coronaria sinistra
- 32 Valva trunci pulmonalis
- 33 Auricula dextra
- 34 Chordae tendinea (Valva atrioventricularis dextra [Valva tricuspidalis])
- 35 A. coronaria dextra
- 36 Vv. ventriculi dextri anteriores
- 37 Atrium dextrum
- 38 A. pulmonalis dextra
- 39 Bronchus principalis dexter
- 40 Truncus brachiocephalicus
- 41 V. subclavia dextra
- 42 A. subclavia dextra
- 43 V. jugularis interna dextra
- 44 V. jugularis interna sinistra

Heart

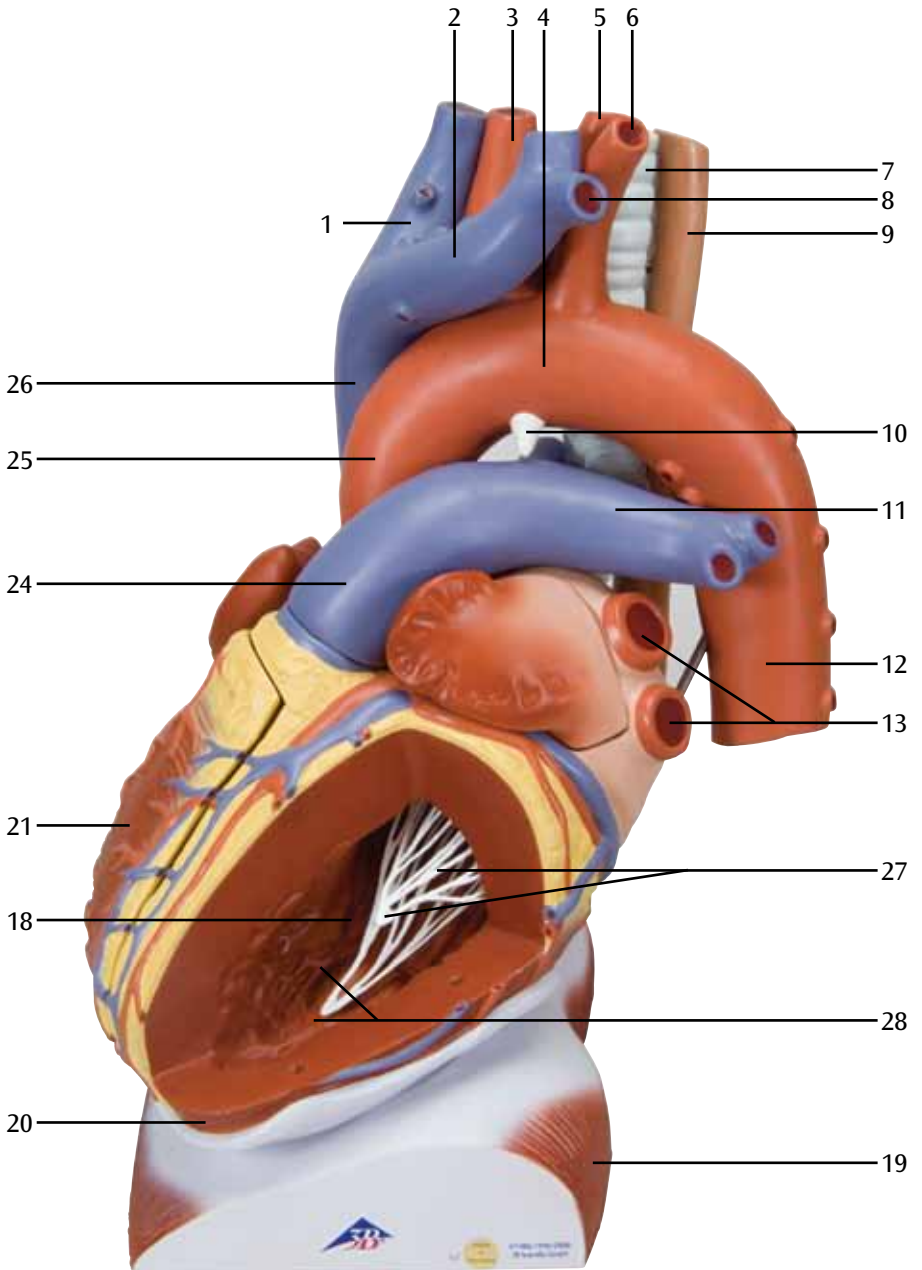
English

- 1 Right brachiocephalic vein
- 2 Left brachiocephalic vein
- 3 Right common carotid artery
- 4 Arch of aorta
- 5 Left common carotid artery
- 6 Left subclavian artery
- 7 Trachea
- 8 Left subclavian vein
- 9 Esophagus
- 10 Ligamentum arteriosum (Botallo's ligament)
- 11 Left pulmonary artery
- 12 Descending aorta
- 13 Left pulmonary veins
- 14 Left auricle
- 15 Great cardiac vein
- 16 Circumflex branch of left coronary artery
- 17 Posterior vein of left ventricle
- 18 Left ventricle
- 19 Diaphragm
- 20 Apex of heart
- 21 Right ventricle
- 22 Anterior interventricular vein
- 23 Anterior interventricular branch of left coronary artery
- 24 Pulmonary trunk
- 25 Ascending aorta
- 26 Superior vena cava
- 27 Chordae tendineae (left atrioventricular valve [mitral valve])
- 28 Papillary muscles
- 29 Right pulmonary veins
- 30 Left atrium
- 31 Left coronary artery
- 32 Pulmonary valve
- 33 Right auricle
- 34 Chordae tendineae (right atrioventricular valve [tricuspid valve])
- 35 Right coronary artery
- 36 Anterior veins of right ventricle
- 37 Right atrium
- 38 Right pulmonary artery
- 39 Right principal bronchus
- 40 Brachiocephalic trunk
- 41 Right subclavian vein
- 42 Right subclavian artery
- 43 Right internal jugular vein
- 44 Left internal jugular vein

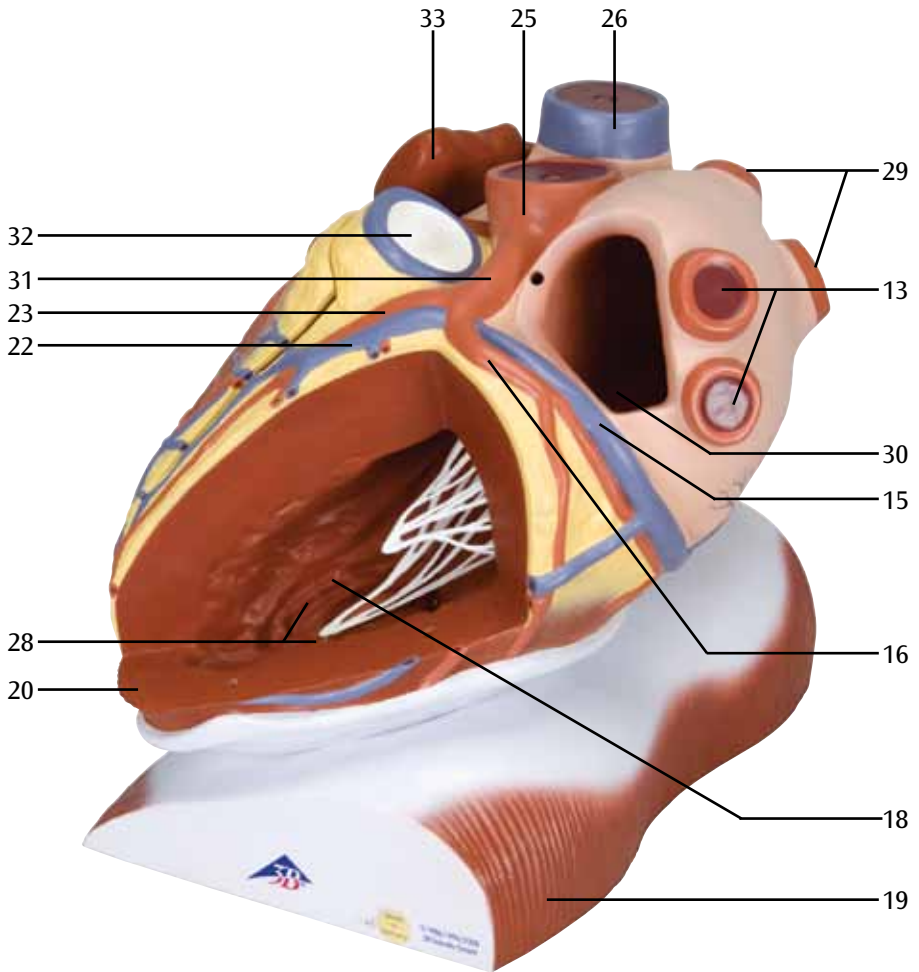
A



B



C



D

