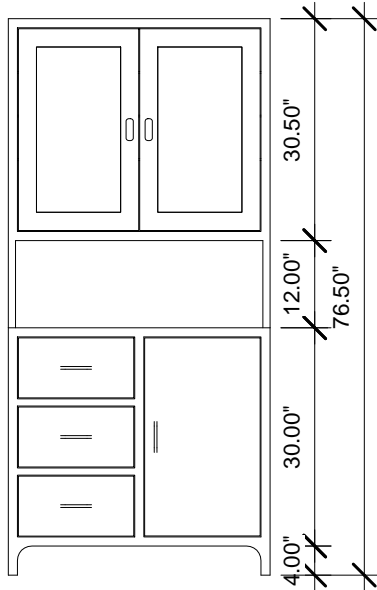
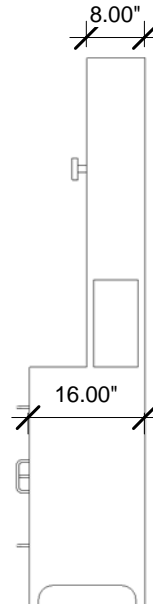


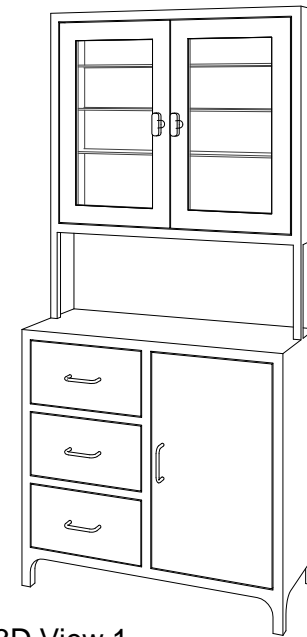
② Top
1/2" = 1'-0"



① Front
1/2" = 1'-0"



③ Right
1/2" = 1'-0"



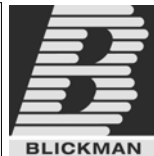
④ 3D View 1

Model 7956SS (Kennedy) Cabinet is a 36" wide treatment and storage cabinet with two distinct sections separated by a stainless steel work surface. Narcotic locker and three glass shelves in the upper section independently lock.

PO#: _____ DATE: _____

APPROVAL: _____

TITLE: _____



	NAME	DATE
DRAWN	JG	2-8-12
ENG APPR.		
MATERIAL		
300 SERIES S/S		

BLICKMAN, INC
CLIFTON, NJ

TITLE: **KENNEDY 7956SS**

FREE STANDING CABINET

PROPRIETARY AND CONFIDENTIAL
THE INFORMATION CONTAINED IN THIS DRAWING IS THE SOLE PROPERTY OF BLICKMAN HEALTH INDUSTRIES. ANY REPRODUCTION IN PART OR AS A WHOLE WITHOUT THE WRITTEN PERMISSION OF BLICKMAN HEALTH INDUSTRIES IS PROHIBITED.

UNLESS OTHERWISE SPECIFIED:
DIMENSIONS ARE IN INCHES
BEND RADIUS = MTL THK.

TOLERANCES:
FRACTION: ± 1/32"
DECIMAL: ± .031"

FINISH

APPRX WEIGHT = lbs

DO NOT SCALE DRAWING

SIZE	DWG. NO.	REV
A	1527956000	
SCALE: 1:16		SHEET 1 OF 1