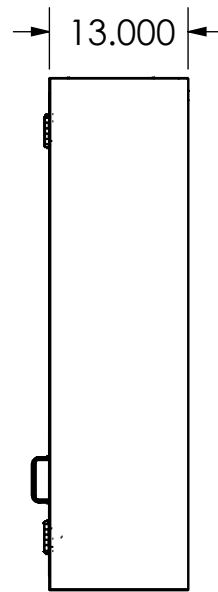
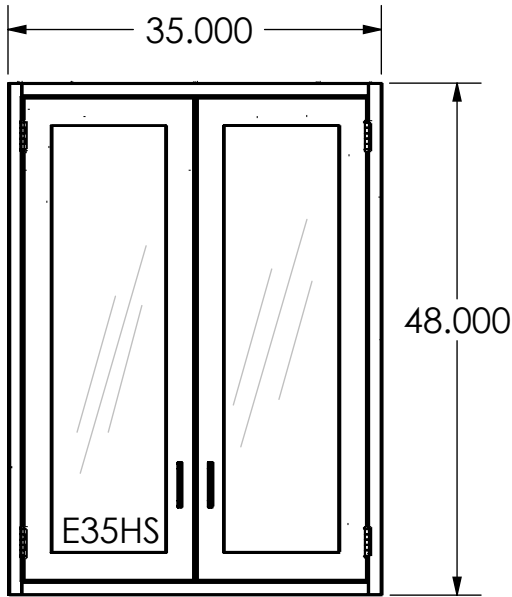
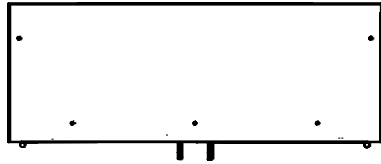
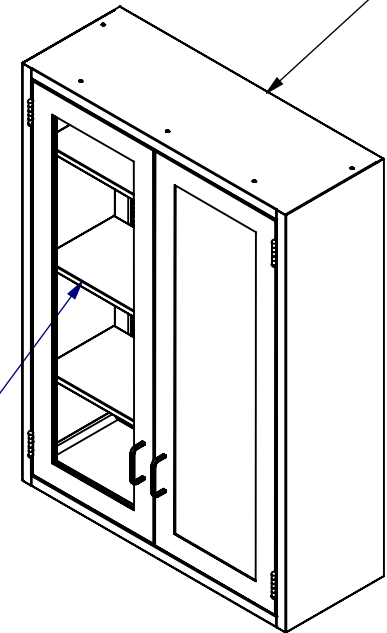


**MATERIALS-** Stainless, Type 300 Series non-magnetic, 1/4" thick, clear tempered sheet glass.  
**GAUGES-** Body shelves door frame back 18 gauge. Z-Bracket 11 gauge  
**CONSTRUCTION-** Cabinet are constructed as individual free standing units, with finished side top and bottom. Glass door - 1/4" thick, clear tempered sheet glass.



Z-BRACKET (not shown) ATTACH TO WALL AND CABINET ATTACH TO BRACKET



(3) SS SHELF ADJ. 1/2"

PO#: \_\_\_\_\_ DATE: \_\_\_\_\_

APPROVAL: \_\_\_\_\_

TITLE: \_\_\_\_\_

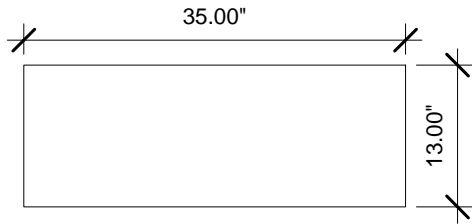


	NAME	DATE
DRAWN	M.J	2/23/2005
ENG APPR.		
MATERIAL	N/A	
FINISH	N/A	
APPRX WEIGHT	= 65.40 lbs	
DO NOT SCALE DRAWING		

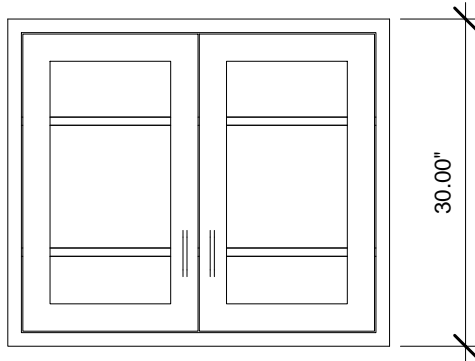
BLICKMAN HEALTH INDUSTRIES, INC. LODI, N.J.		
TITLE:  E35HS WC 35Wx48Hx13D		
SIZE <b>A</b>	DWG. NO. 2020335480	REV PJ
SCALE: 1:18		SHEET 1 OF 1

**PROPRIETARY AND CONFIDENTIAL**  
 THE INFORMATION CONTAINED IN THIS DRAWING IS THE SOLE PROPERTY OF BLICKMAN HEALTH INDUSTRIES. ANY REPRODUCTION IN PART OR AS A WHOLE WITHOUT THE WRITTEN PERMISSION OF BLICKMAN HEALTH INDUSTRIES IS PROHIBITED.

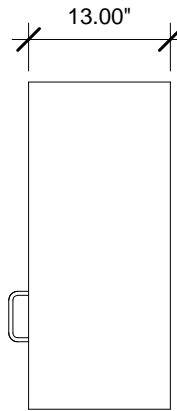
UNLESS OTHERWISE SPECIFIED:  
 DIMENSIONS ARE IN INCHES  
 BEND RADIUS = MTL. THK.  
 TOLERANCES:  
 FRACTION: ±1/32"  
 DECIMAL: ±.031"



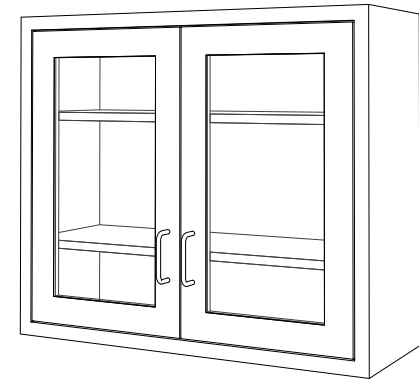
② Top  
3/4" = 1'-0"



① Front  
3/4" = 1'-0"



③ Right  
3/4" = 1'-0"



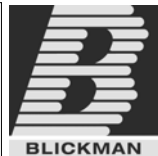
④ 3D View 1

Wall Cabinets are designed for flush face construction with a recessed back panel for uneven wall surfaces. 1/4" tempered glass hinged doors. Adjustable shelves on 1/2" increments. Flush Finished bottoms.

PO#: \_\_\_\_\_ DATE: \_\_\_\_\_

APPROVAL: \_\_\_\_\_

TITLE: \_\_\_\_\_

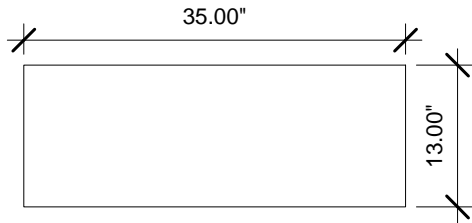


	NAME	DATE
DRAWN	JG	2-8-12
ENG APPR.		
MATERIAL		
300 SERIES S/S		
FINISH		
APPRX WEIGHT = lbs		
DO NOT SCALE DRAWING		

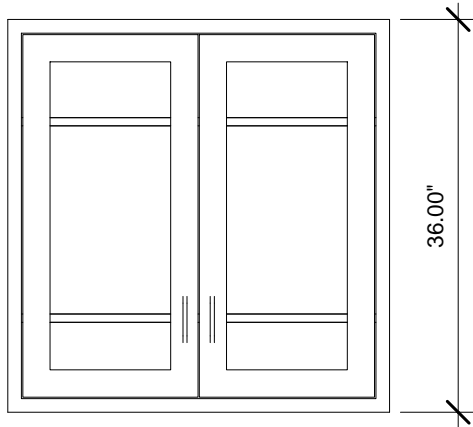
BLICKMAN, INC CLIFTON, NJ		
TITLE: <b>E35LS</b> <b>WALL CABINET</b>		
SIZE <b>A</b>	DWG. NO. <b>2020335000</b>	REV
SCALE: 1:16	SHEET 1 OF 1	

PROPRIETARY AND CONFIDENTIAL  
THE INFORMATION CONTAINED IN THIS  
DRAWING IS THE SOLE PROPERTY OF  
BLICKMAN HEALTH INDUSTRIES. ANY  
REPRODUCTION IN PART OR AS A WHOLE  
WITHOUT THE WRITTEN PERMISSION OF  
BLICKMAN HEALTH INDUSTRIES IS PROHIBITED.

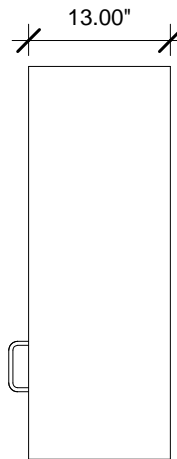
UNLESS OTHERWISE SPECIFIED:  
DIMENSIONS ARE IN INCHES  
BEND RADIUS = MTL THK.  
TOLERANCES:  
FRACTION: ± 1/32"  
DECIMAL: ± .031"



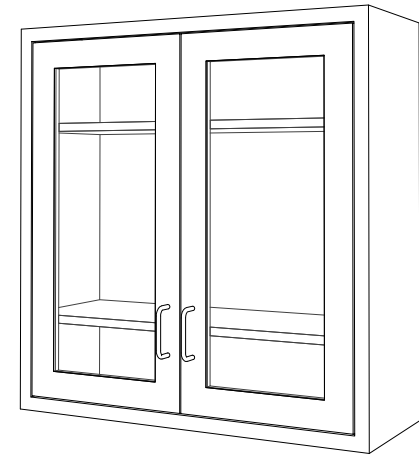
② Top  
3/4" = 1'-0"



① Front  
3/4" = 1'-0"



③ Right  
3/4" = 1'-0"



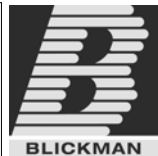
④ 3D View 1

Wall Cabinets are designed for flush face construction with a recessed back panel for uneven wall surfaces. 1/4" tempered glass hinged doors. Adjustable shelves on 1/2" increments. Flush Finished bottoms.

PO#: \_\_\_\_\_ DATE: \_\_\_\_\_

APPROVAL: \_\_\_\_\_

TITLE: \_\_\_\_\_

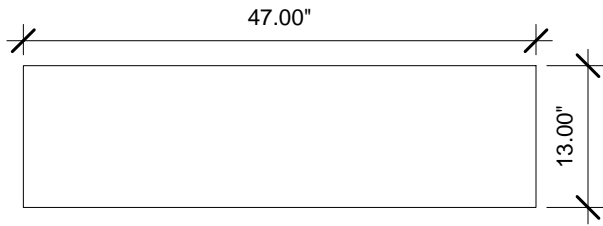


	NAME	DATE
DRAWN	JG	2-8-12
ENG APPR.		
MATERIAL		
300 SERIES S/S		
FINISH		
APPRX WEIGHT = lbs		
DO NOT SCALE DRAWING		

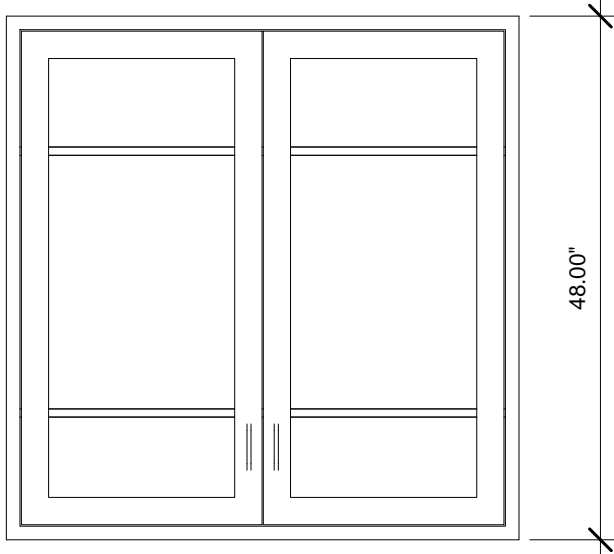
BLICKMAN, INC CLIFTON, NJ		
TITLE: <b>E35MS</b> <b>WALL CABINET</b>		
SIZE <b>A</b>	DWG. NO. <b>2020335360</b>	REV
SCALE: 1:16	SHEET 1 OF 1	

PROPRIETARY AND CONFIDENTIAL  
THE INFORMATION CONTAINED IN THIS  
DRAWING IS THE SOLE PROPERTY OF  
BLICKMAN HEALTH INDUSTRIES. ANY  
REPRODUCTION IN PART OR AS A WHOLE  
WITHOUT THE WRITTEN PERMISSION OF  
BLICKMAN HEALTH INDUSTRIES IS PROHIBITED.

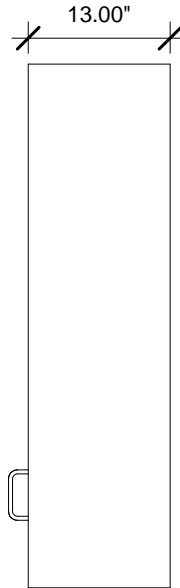
UNLESS OTHERWISE SPECIFIED:  
DIMENSIONS ARE IN INCHES  
BEND RADIUS = MTL THK.  
TOLERANCES:  
FRACTION: ± 1/32"  
DECIMAL: ± .031"



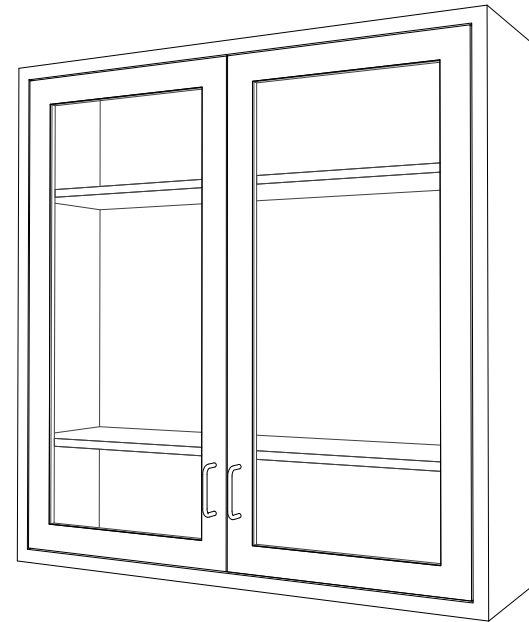
② Top  
3/4" = 1'-0"



① Front  
3/4" = 1'-0"



③ Right  
3/4" = 1'-0"



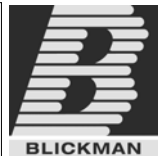
④ 3D View 1

Wall Cabinets are designed for flush face construction with a recessed back panel for uneven wall surfaces. 1/4" tempered glass hinged doors. Adjustable shelves on 1/2" increments. Flush Finished bottoms.

PO#: \_\_\_\_\_ DATE: \_\_\_\_\_

APPROVAL: \_\_\_\_\_

TITLE: \_\_\_\_\_

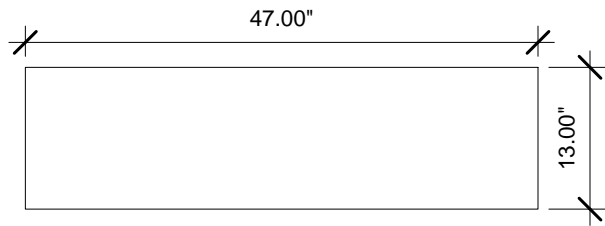


	NAME	DATE
DRAWN	JG	2-8-12
ENG APPR.		
MATERIAL		
300 SERIES S/S		
FINISH		
APPRX WEIGHT = lbs		
DO NOT SCALE DRAWING		

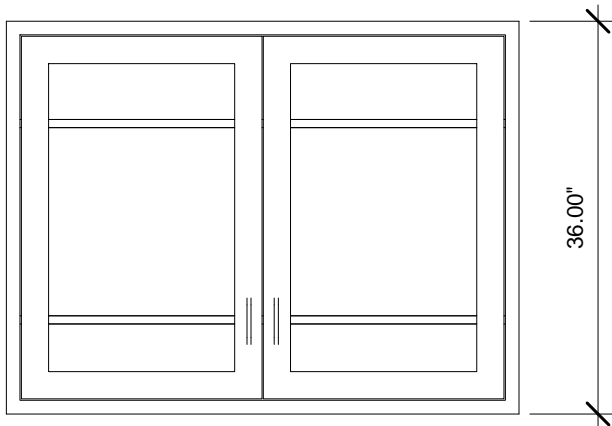
BLICKMAN, INC CLIFTON, NJ		
TITLE: <b>E47HS</b>		
<b>WALL CABINET</b>		
SIZE <b>A</b>	DWG. NO. <b>2020347480</b>	REV
SCALE: 1:16		SHEET 1 OF 1

PROPRIETARY AND CONFIDENTIAL  
THE INFORMATION CONTAINED IN THIS DRAWING IS THE SOLE PROPERTY OF BLICKMAN HEALTH INDUSTRIES. ANY REPRODUCTION IN PART OR AS A WHOLE WITHOUT THE WRITTEN PERMISSION OF BLICKMAN HEALTH INDUSTRIES IS PROHIBITED.

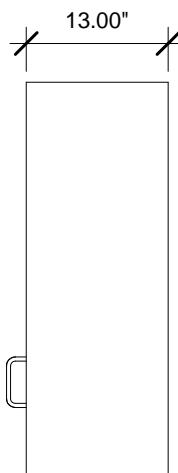
UNLESS OTHERWISE SPECIFIED:  
DIMENSIONS ARE IN INCHES  
BEND RADIUS = MTL THK.  
TOLERANCES:  
FRACTION: ± 1/32"  
DECIMAL: ± .031"



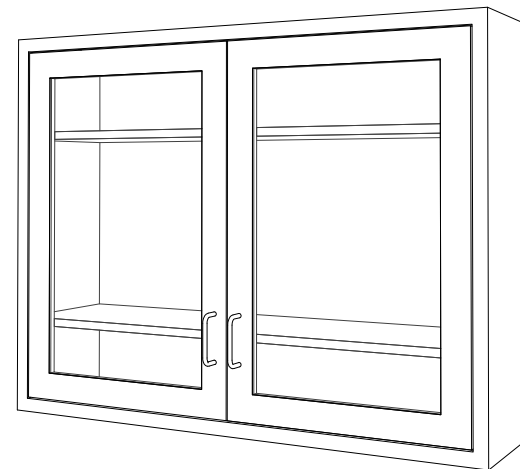
② Top  
3/4" = 1'-0"



① Front  
3/4" = 1'-0"



③ Right  
3/4" = 1'-0"



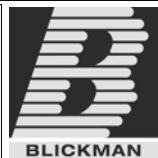
④ 3D View 1

Wall Cabinets are designed for flush face construction with a recessed back panel for uneven wall surfaces. 1/4" tempered glass hinged doors. Adjustable shelves on 1/2" increments. Flush Finished bottoms.

PO#: \_\_\_\_\_ DATE: \_\_\_\_\_

APPROVAL: \_\_\_\_\_

TITLE: \_\_\_\_\_



NAME	DATE
JG	2-8-12
ENG APPR.	
MATERIAL	
300 SERIES S/S	
FINISH	
APPRX WEIGHT = lbs	
DO NOT SCALE DRAWING	

BLICKMAN, INC CLIFTON, NJ		
TITLE: <b>E47MS</b>		
<b>WALL CABINET</b>		
SIZE <b>A</b>	DWG. NO. <b>2020347360</b>	REV
SCALE: 1:16	SHEET 1 OF 1	

PROPRIETARY AND CONFIDENTIAL  
THE INFORMATION CONTAINED IN THIS DRAWING IS THE SOLE PROPERTY OF BLICKMAN HEALTH INDUSTRIES. ANY REPRODUCTION IN PART OR AS A WHOLE WITHOUT THE WRITTEN PERMISSION OF BLICKMAN HEALTH INDUSTRIES IS PROHIBITED.

UNLESS OTHERWISE SPECIFIED:  
DIMENSIONS ARE IN INCHES  
BEND RADIUS = MTL. THK.  
TOLERANCES:  
FRACTION: ± 1/32"  
DECIMAL: ± .031"