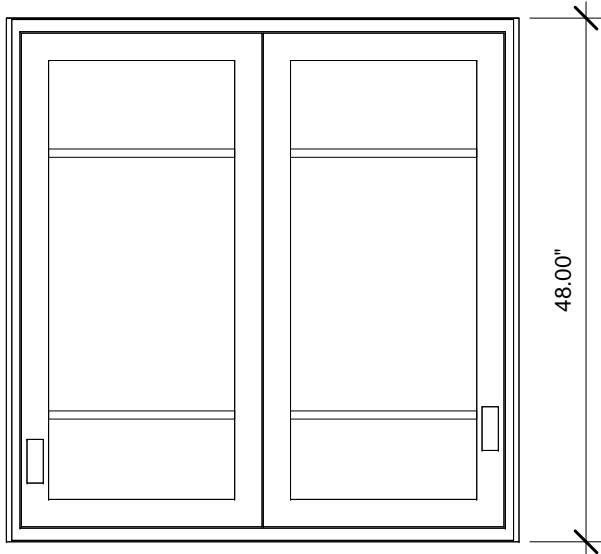
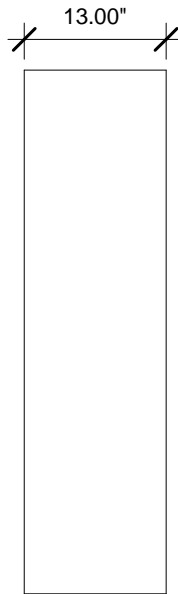


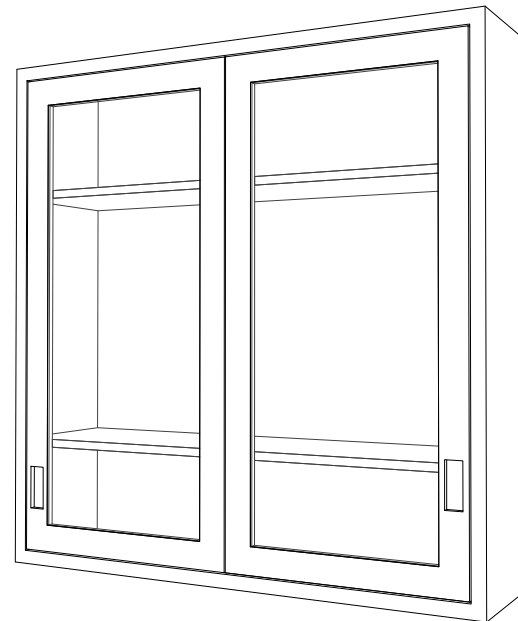
② Top  
3/4" = 1'-0"



① Front  
3/4" = 1'-0"



③ Right  
3/4" = 1'-0"



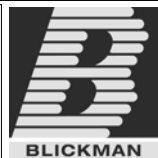
④ 3D View 1

Wall Cabinets are designed for flush face construction with a recessed back panel for uneven wall surfaces. 1/4" tempered glass sliding doors. Adjustable shelves on 1/2" increments. Flush Finished bottoms.

PO#: \_\_\_\_\_ DATE: \_\_\_\_\_

APPROVAL: \_\_\_\_\_

TITLE: \_\_\_\_\_

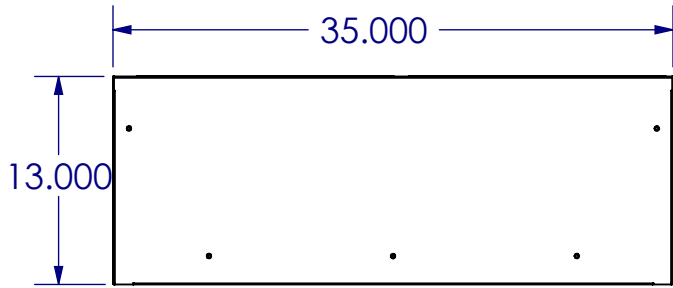


|                      |      |        |
|----------------------|------|--------|
|                      | NAME | DATE   |
| DRAWN                | JG   | 2-8-12 |
| ENG APPR.            |      |        |
| MATERIAL             |      |        |
| 300 SERIES S/S       |      |        |
| FINISH               |      |        |
| APPRX WEIGHT = lbs   |      |        |
| DO NOT SCALE DRAWING |      |        |

|                                 |                        |     |
|---------------------------------|------------------------|-----|
| BLICKMAN, INC<br>CLIFTON, NJ    |                        |     |
| TITLE:<br>F35HS<br>WALL CABINET |                        |     |
| SIZE<br>A                       | DWG. NO.<br>2023035480 | REV |
| SCALE: 1:16                     | SHEET 1 OF 1           |     |

PROPRIETARY AND CONFIDENTIAL  
THE INFORMATION CONTAINED IN THIS  
DRAWING IS THE SOLE PROPERTY OF  
BLICKMAN HEALTH INDUSTRIES. ANY  
REPRODUCTION IN PART OR AS A WHOLE  
WITHOUT THE WRITTEN PERMISSION OF  
BLICKMAN HEALTH INDUSTRIES IS PROHIBITED.

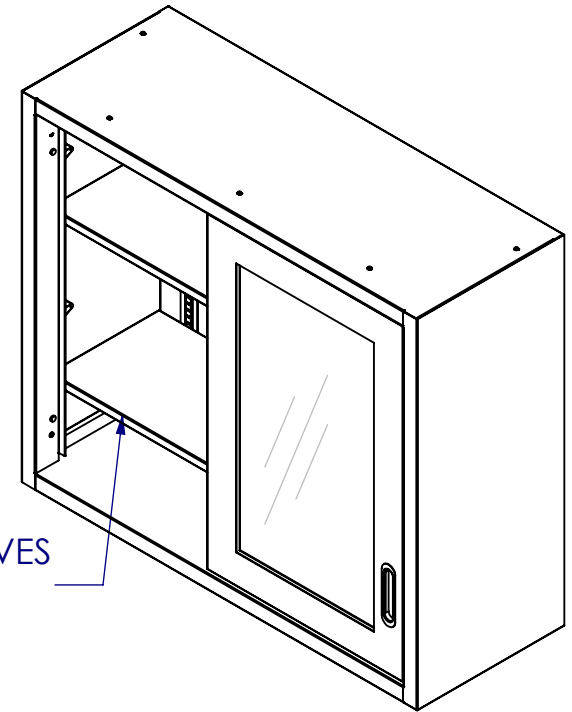
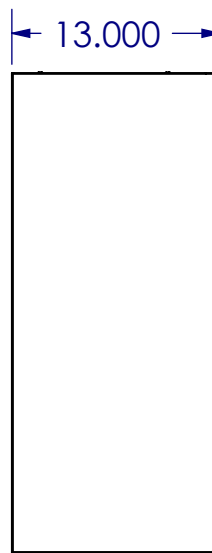
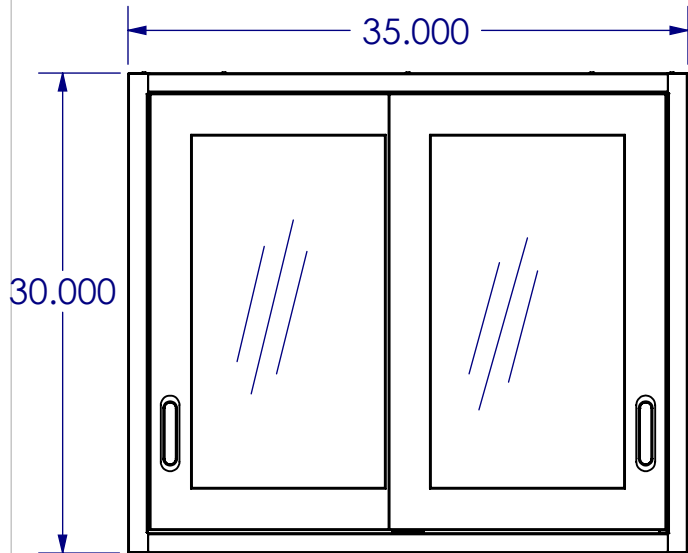
UNLESS OTHERWISE SPECIFIED:  
DIMENSIONS ARE IN INCHES  
BEND RADIUS = MTL. THK.  
TOLERANCES:  
FRACTION: ± 1/32"  
DECIMAL: ± .031"



**MATERIALS-** Stainless, Type 300 Series non-magnetic, 1/4" thick, clear tempered sheet glass.

**GAUGES-** Body shelves door frame back 18 gauge. Z-Bracket 11 gauge

**CONSTRUCTION-** Cabinet are constructed as individual free standing units, with finished side top and bottom. Sliding Door Cabinet.



(2) SS SHELVES  
ADJ. 1/2"

PO#: \_\_\_\_\_ DATE: \_\_\_\_\_

APPROVAL: \_\_\_\_\_

TITLE: \_\_\_\_\_



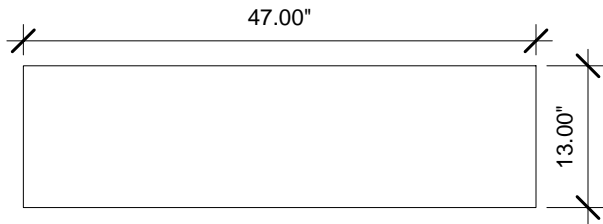
**PROPRIETARY AND CONFIDENTIAL**  
THE INFORMATION CONTAINED IN THIS DRAWING IS THE SOLE PROPERTY OF BLICKMAN HEALTH INDUSTRIES. ANY REPRODUCTION IN PART OR AS A WHOLE WITHOUT THE WRITTEN PERMISSION OF BLICKMAN HEALTH INDUSTRIES IS PROHIBITED.

UNLESS OTHERWISE SPECIFIED:  
DIMENSIONS ARE IN INCHES  
BEND RADIUS = MTL. THK.  
TOLERANCES:  
FRACTION: ±1/32"  
DECIMAL: ±.031"

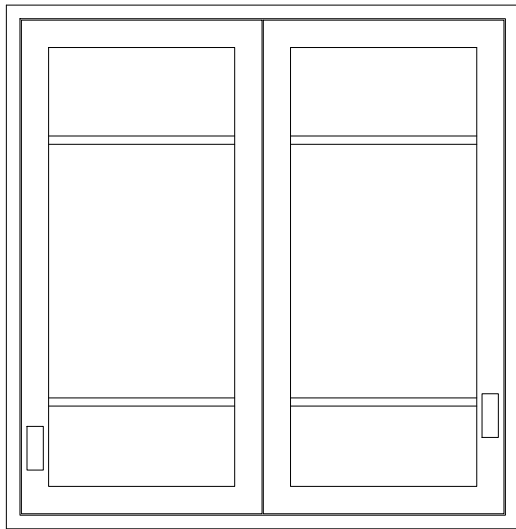
|                      |              |           |
|----------------------|--------------|-----------|
|                      | NAME         | DATE      |
| DRAWN                | M.J          | 8/22/2004 |
| ENG APPR.            |              |           |
| MATERIAL             | N/A          |           |
| FINISH               | N/A          |           |
| APPRX WEIGHT         | = 77.888 lbs |           |
| DO NOT SCALE DRAWING |              |           |

|  |                        |           |
|--|------------------------|-----------|
| BLICKMAN HEALTH INDUSTRIES, INC.<br>LODI, N.J. |                        |           |
| TITLE:<br><br>F35LS<br>WC 35Wx30Hx13D          |                        |           |
| SIZE<br><b>A</b>                               | DWG. NO.<br>2023035000 | REV<br>PM |
| SCALE: 1:12                                    | SHEET 1 OF 1           |           |





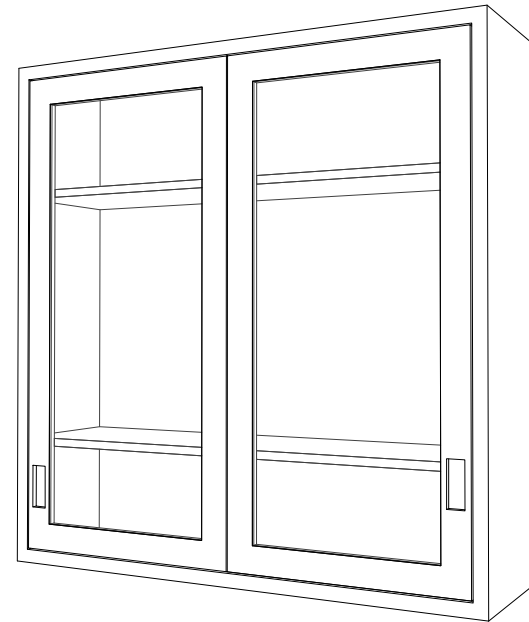
② Top  
3/4" = 1'-0"



① Front  
3/4" = 1'-0"



③ Right  
3/4" = 1'-0"



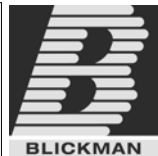
④ 3D View 1

Wall Cabinets are designed for flush face construction with a recessed back panel for uneven wall surfaces. 1/4" tempered glass sliding doors. Adjustable shelves on 1/2" increments. Flush Finished bottoms.

PO#: \_\_\_\_\_ DATE: \_\_\_\_\_

APPROVAL: \_\_\_\_\_

TITLE: \_\_\_\_\_

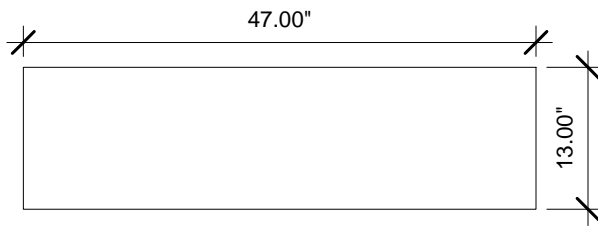


|                      |        |
|----------------------|--------|
| NAME                 | DATE   |
| JG                   | 2-8-12 |
| ENG APPR.            |        |
| MATERIAL             |        |
| 300 SERIES S/S       |        |
| FINISH               |        |
| APPRX WEIGHT = lbs   |        |
| DO NOT SCALE DRAWING |        |

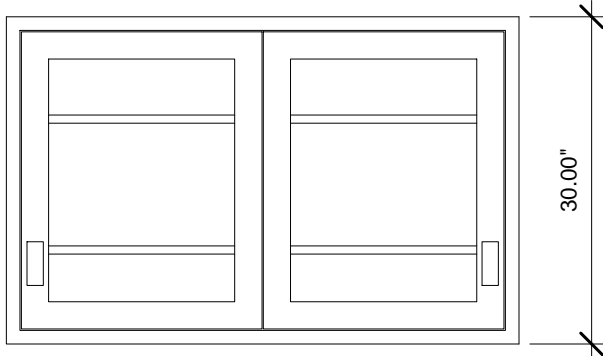
|                                 |                        |     |
|---------------------------------|------------------------|-----|
| BLICKMAN, INC<br>CLIFTON, NJ    |                        |     |
| TITLE:<br>F47HS<br>WALL CABINET |                        |     |
| SIZE<br>A                       | DWG. NO.<br>2023047480 | REV |
| SCALE: 1:16                     | SHEET 1 OF 1           |     |

PROPRIETARY AND CONFIDENTIAL  
THE INFORMATION CONTAINED IN THIS DRAWING IS THE SOLE PROPERTY OF BLICKMAN HEALTH INDUSTRIES. ANY REPRODUCTION IN PART OR AS A WHOLE WITHOUT THE WRITTEN PERMISSION OF BLICKMAN HEALTH INDUSTRIES IS PROHIBITED.

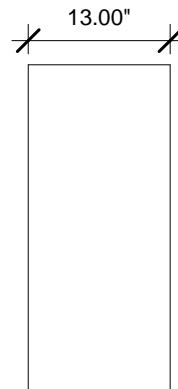
UNLESS OTHERWISE SPECIFIED:  
DIMENSIONS ARE IN INCHES  
BEND RADIUS = MTL THK.  
TOLERANCES:  
FRACTION: ± 1/32"  
DECIMAL: ± .031"



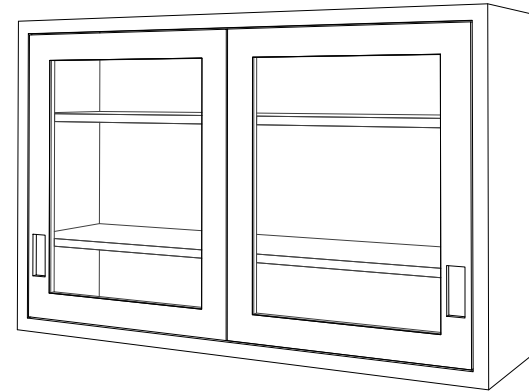
② Top  
3/4" = 1'-0"



① Front  
3/4" = 1'-0"



③ Right  
3/4" = 1'-0"



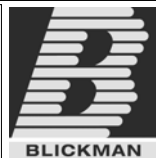
④ 3D View 1

Wall Cabinets are designed for flush face construction with a recessed back panel for uneven wall surfaces. 1/4" tempered glass sliding doors. Adjustable shelves on 1/2" increments. Flush Finished bottoms.

PO#: \_\_\_\_\_ DATE: \_\_\_\_\_

APPROVAL: \_\_\_\_\_

TITLE: \_\_\_\_\_



|           |      |        |
|-----------|------|--------|
|           | NAME | DATE   |
| DRAWN     | JG   | 2-8-12 |
| ENG APPR. |      |        |

MATERIAL  
300 SERIES S/S

FINISH

APPRX WEIGHT = lbs

DO NOT SCALE DRAWING

|                                 |                        |     |
|---------------------------------|------------------------|-----|
| BLICKMAN, INC<br>CLIFTON, NJ    |                        |     |
| TITLE:<br>F47LS<br>WALL CABINET |                        |     |
| SIZE<br>A                       | DWG. NO.<br>2023047000 | REV |
| SCALE: 1:16                     | SHEET 1 OF 1           |     |

PROPRIETARY AND CONFIDENTIAL  
THE INFORMATION CONTAINED IN THIS  
DRAWING IS THE SOLE PROPERTY OF  
BLICKMAN HEALTH INDUSTRIES. ANY  
REPRODUCTION IN PART OR AS A WHOLE  
WITHOUT THE WRITTEN PERMISSION OF  
BLICKMAN HEALTH INDUSTRIES IS PROHIBITED.

UNLESS OTHERWISE SPECIFIED:  
DIMENSIONS ARE IN INCHES  
BEND RADIUS = MTL THK.

TOLERANCES:  
FRACTION: ± 1/32"  
DECIMAL: ± .031"

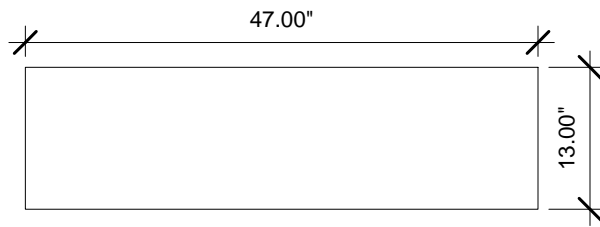
5

4

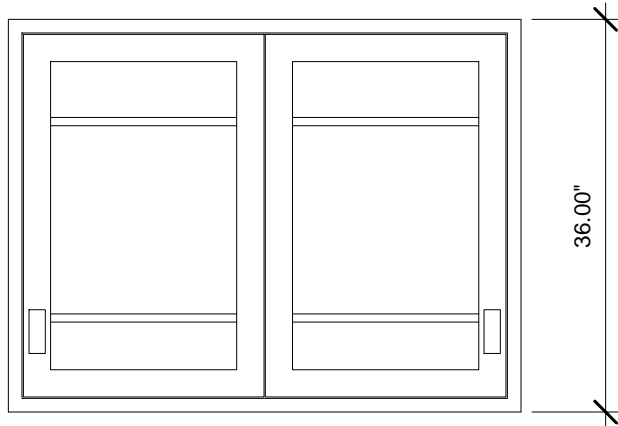
3

2

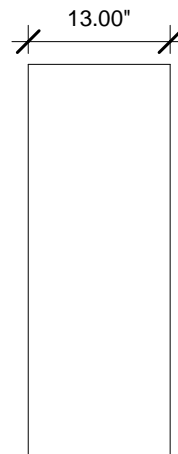
1



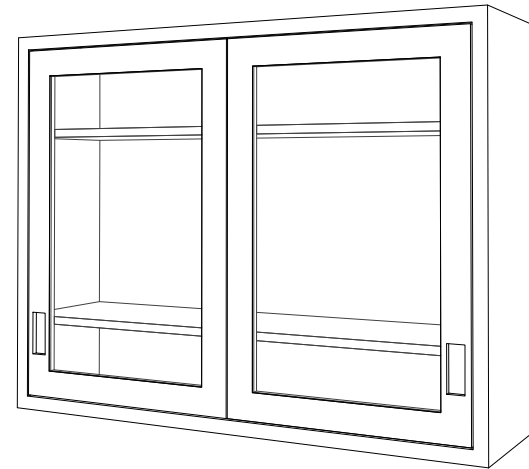
② Top  
3/4" = 1'-0"



① Front  
3/4" = 1'-0"



③ Right  
3/4" = 1'-0"



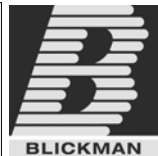
④ 3D View 1

Wall Cabinets are designed for flush face construction with a recessed back panel for uneven wall surfaces. 1/4" tempered glass sliding doors. Adjustable shelves on 1/2" increments. Flush Finished bottoms.

PO#: \_\_\_\_\_ DATE: \_\_\_\_\_

APPROVAL: \_\_\_\_\_

TITLE: \_\_\_\_\_



|                      |      |        |
|----------------------|------|--------|
|                      | NAME | DATE   |
| DRAWN                | JG   | 2-8-12 |
| ENG APPR.            |      |        |
| MATERIAL             |      |        |
| 300 SERIES S/S       |      |        |
| FINISH               |      |        |
| APPRX WEIGHT = lbs   |      |        |
| DO NOT SCALE DRAWING |      |        |

|                              |                               |     |
|------------------------------|-------------------------------|-----|
| BLICKMAN, INC<br>CLIFTON, NJ |                               |     |
| TITLE:<br><b>F47MS</b>       |                               |     |
| <b>WALL CABINET</b>          |                               |     |
| SIZE<br><b>A</b>             | DWG. NO.<br><b>2023047360</b> | REV |
| SCALE: 1:16                  | SHEET 1 OF 1                  |     |

PROPRIETARY AND CONFIDENTIAL  
THE INFORMATION CONTAINED IN THIS DRAWING IS THE SOLE PROPERTY OF BLICKMAN HEALTH INDUSTRIES. ANY REPRODUCTION IN PART OR AS A WHOLE WITHOUT THE WRITTEN PERMISSION OF BLICKMAN HEALTH INDUSTRIES IS PROHIBITED.

UNLESS OTHERWISE SPECIFIED:  
DIMENSIONS ARE IN INCHES  
BEND RADIUS = MTL THK.  
TOLERANCES:  
FRACTION: ± 1/32"  
DECIMAL: ± .031"