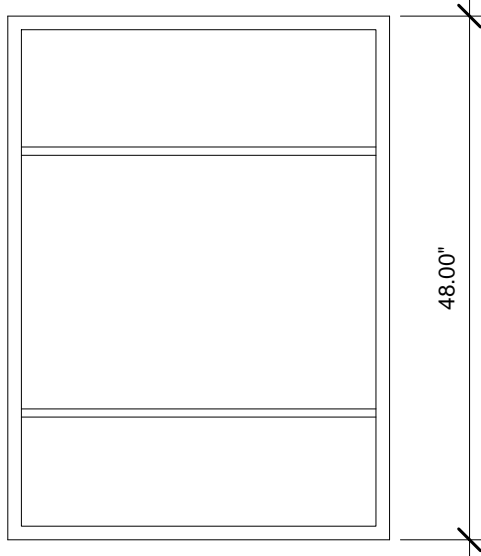
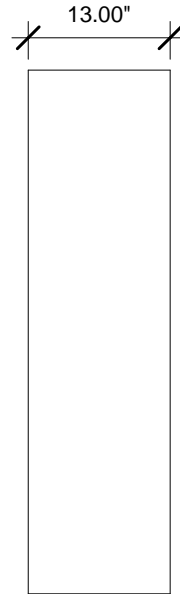


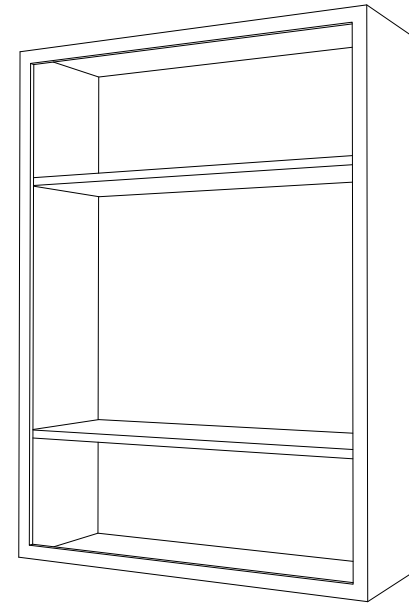
② Top
3/4" = 1'-0"



① Front
3/4" = 1'-0"



③ Right
3/4" = 1'-0"



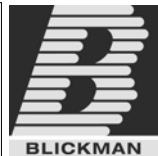
④ 3D View 1

Wall Cabinets are designed for flush face construction with a recessed back panel for uneven wall surfaces. Adjustable shelves on 1/2" increments. Flush Finished bottoms.

PO#: _____ DATE: _____

APPROVAL: _____

TITLE: _____



DRAWN	NAME	DATE
	JG	2-8-12

ENG APPR.	
-----------	--

MATERIAL	300 SERIES S/S
----------	----------------

FINISH	
--------	--

APPRX WEIGHT = lbs	
--------------------	--

DO NOT SCALE DRAWING

BLICKMAN, INC CLIFTON, NJ

TITLE:	G35HS
--------	-------

WALL CABINET

SIZE	DWG. NO.	REV
------	----------	-----

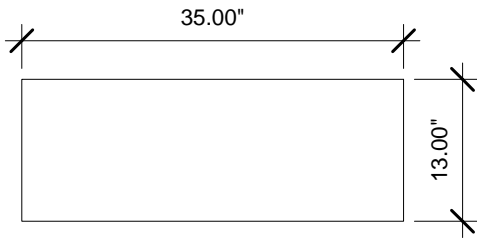
A	2020435480	
---	------------	--

SCALE: 1:16	SHEET 1 OF 1
-------------	--------------

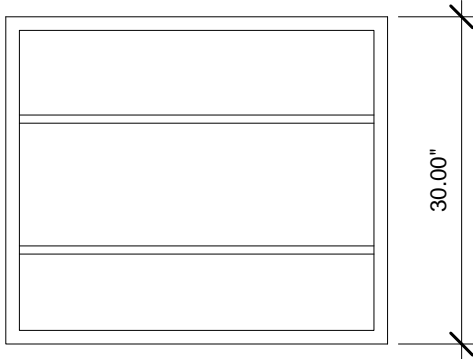
PROPRIETARY AND CONFIDENTIAL
THE INFORMATION CONTAINED IN THIS
DRAWING IS THE SOLE PROPERTY OF
BLICKMAN HEALTH INDUSTRIES. ANY
REPRODUCTION IN PART OR AS A WHOLE
WITHOUT THE WRITTEN PERMISSION OF
BLICKMAN HEALTH INDUSTRIES IS PROHIBITED.

UNLESS OTHERWISE SPECIFIED:
DIMENSIONS ARE IN INCHES
BEND RADIUS = MTL THK.

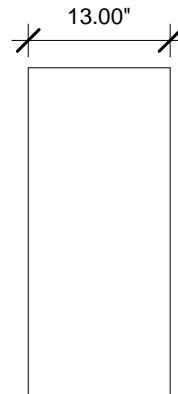
TOLERANCES:
FRACTION: ± 1/32"
DECIMAL: ± .031"



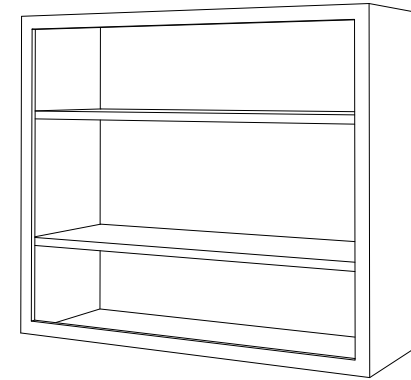
② Top
3/4" = 1'-0"



① Front
3/4" = 1'-0"



③ Right
3/4" = 1'-0"



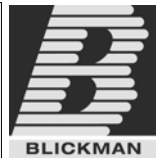
④ 3D View 1

Wall Cabinets are designed for flush face construction with a recessed back panel for uneven wall surfaces. Adjustable shelves on 1/2" increments. Flush Finished bottoms.

PO#: _____ DATE: _____

APPROVAL: _____

TITLE: _____



DRAWN	NAME	DATE
	JG	2-8-12
ENG APPR.		

MATERIAL
300 SERIES S/S

FINISH

APPRX WEIGHT = lbs

DO NOT SCALE DRAWING

BLICKMAN, INC
CLIFTON, NJ

TITLE:
G35LS
WALL CABINET

SIZE	DWG. NO.	REV
A	2020435000	

SCALE: 1:16

SHEET 1 OF 1

PROPRIETARY AND CONFIDENTIAL
THE INFORMATION CONTAINED IN THIS DRAWING IS THE SOLE PROPERTY OF BLICKMAN HEALTH INDUSTRIES. ANY REPRODUCTION IN PART OR AS A WHOLE WITHOUT THE WRITTEN PERMISSION OF BLICKMAN HEALTH INDUSTRIES IS PROHIBITED.

UNLESS OTHERWISE SPECIFIED:
DIMENSIONS ARE IN INCHES
BEND RADIUS = MTL THK.

TOLERANCES:
FRACTION: ± 1/32"
DECIMAL: ± .031"

5

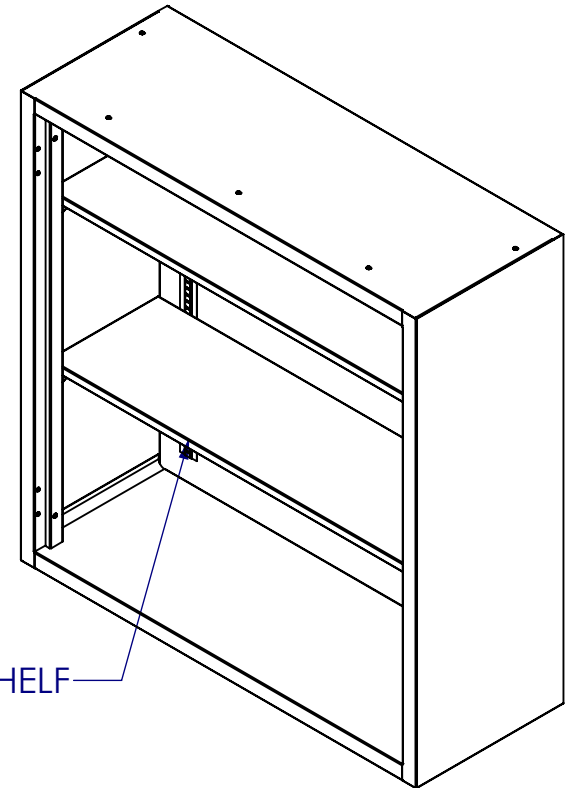
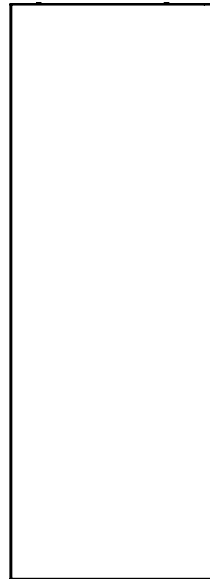
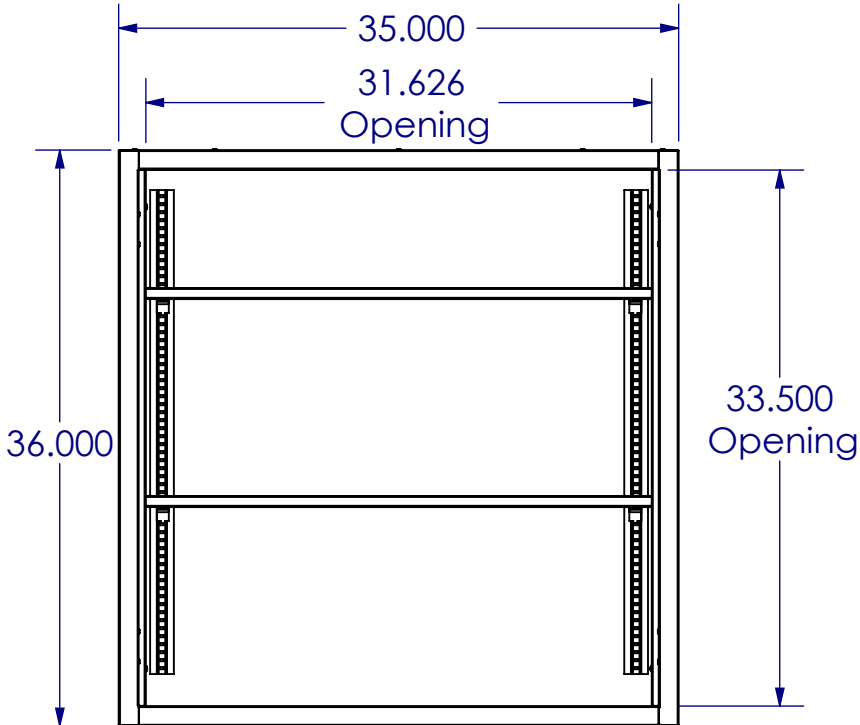
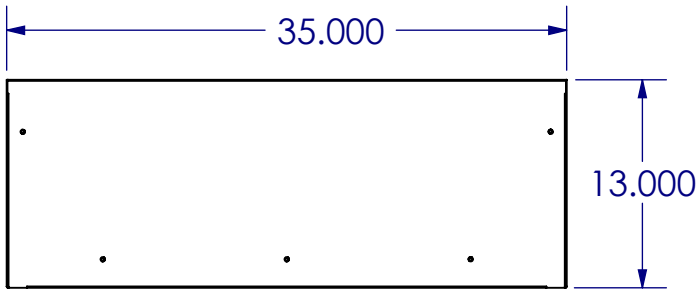
4

3

2

1

MATERIAL- Stainless Steel, Type300 Series Non-magnetic.
GAUGE-Body,shelves,door, pan back-18 gauge.
CONSTRUCTION- Cabinets are constructed as individual free standing units with finished body.



(2) S/S SHELF

PO#: _____ DATE: _____

APPROVAL: _____

TITLE: _____

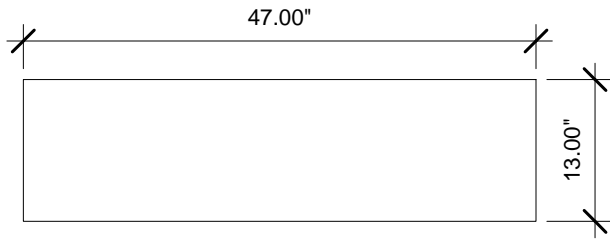


PROPRIETARY AND CONFIDENTIAL
 THE INFORMATION CONTAINED IN THIS DRAWING IS THE SOLE PROPERTY OF BLICKMAN HEALTH INDUSTRIES. ANY REPRODUCTION IN PART OR AS A WHOLE WITHOUT THE WRITTEN PERMISSION OF BLICKMAN HEALTH INDUSTRIES IS PROHIBITED.

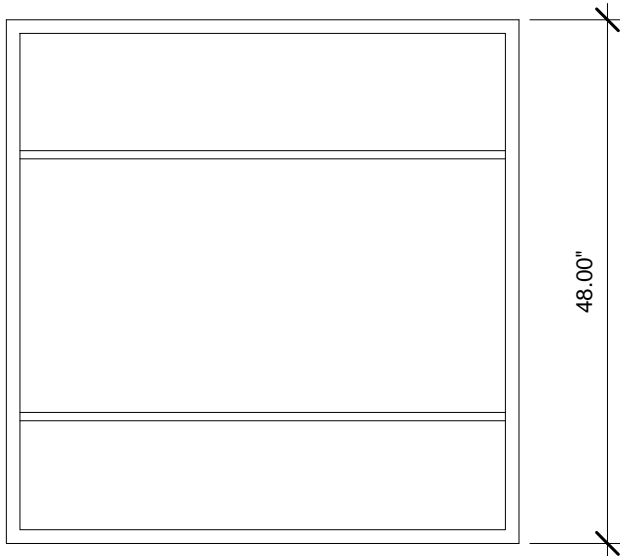
UNLESS OTHERWISE SPECIFIED:
 DIMENSIONS ARE IN INCHES
 BEND RADIUS = MTL. THK.
 TOLERANCES:
 FRACTION: ±1/32"
 DECIMAL: ±.031"

	NAME	DATE
DRAWN	M.J	5/11/2006
ENG APPR.		
MATERIAL	N/A	
FINISH	N/A	
APPRX WEIGHT	= 37.260 lbs	
DO NOT SCALE DRAWING		

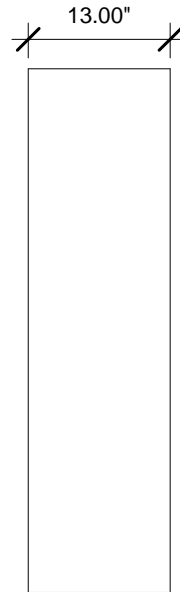
BLICKMAN HEALTH INDUSTRIES, INC. LODI, N.J.		
TITLE: G35MS WC 35Wx36Hx13D		
SIZE A	DWG. NO. 2020435360	REV PC
SCALE: 1:12	SHEET 1 OF 1	



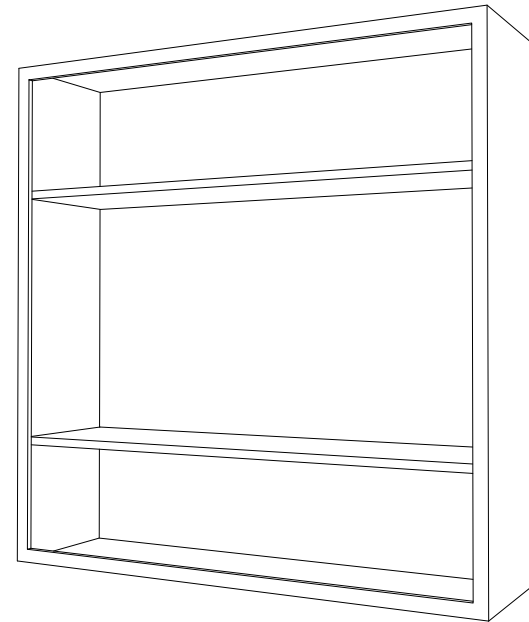
② Top
3/4" = 1'-0"



① Front
3/4" = 1'-0"



③ Right
3/4" = 1'-0"



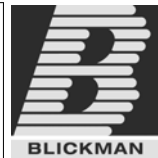
④ 3D View 1

Wall Cabinets are designed for flush face construction with a recessed back panel for uneven wall surfaces. Adjustable shelves on 1/2" increments. Flush Finished bottoms.

PO#: _____ DATE: _____

APPROVAL: _____

TITLE: _____



DRAWN	NAME	DATE
	JG	2-8-12
ENG APPR.		

MATERIAL
300 SERIES S/S

FINISH

APPRX WEIGHT = lbs

DO NOT SCALE DRAWING

BLICKMAN, INC
CLIFTON, NJ

TITLE:
G47HS
WALL CABINET

SIZE	DWG. NO.	REV
A	2020447480	

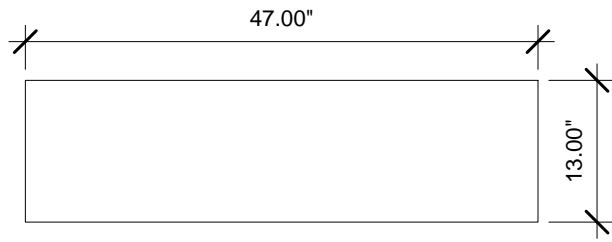
SCALE: 1:16

SHEET 1 OF 1

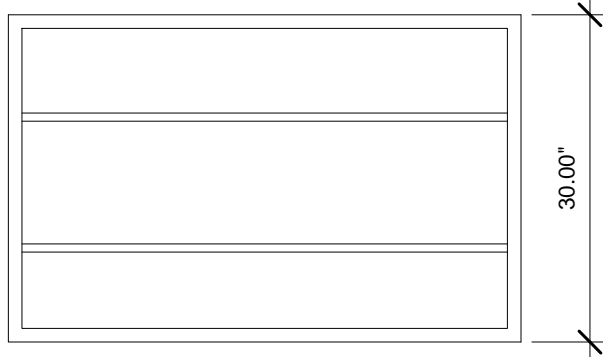
PROPRIETARY AND CONFIDENTIAL
THE INFORMATION CONTAINED IN THIS DRAWING IS THE SOLE PROPERTY OF BLICKMAN HEALTH INDUSTRIES. ANY REPRODUCTION IN PART OR AS A WHOLE WITHOUT THE WRITTEN PERMISSION OF BLICKMAN HEALTH INDUSTRIES IS PROHIBITED.

UNLESS OTHERWISE SPECIFIED:
DIMENSIONS ARE IN INCHES
BEND RADIUS = MTL THK.

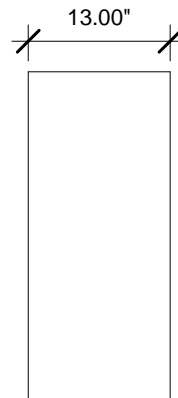
TOLERANCES:
FRACTION: ± 1/32"
DECIMAL: ± .031"



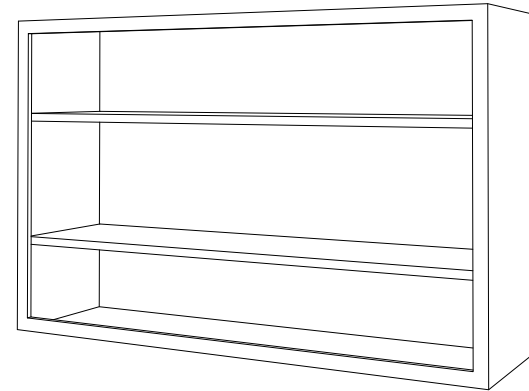
② Top
3/4" = 1'-0"



① Front
3/4" = 1'-0"



③ Right
3/4" = 1'-0"



④ 3D View 1

Wall Cabinets are designed for flush face construction with a recessed back panel for uneven wall surfaces. Adjustable shelves on 1/2" increments. Flush Finished bottoms.

PO#: _____ DATE: _____

APPROVAL: _____

TITLE: _____

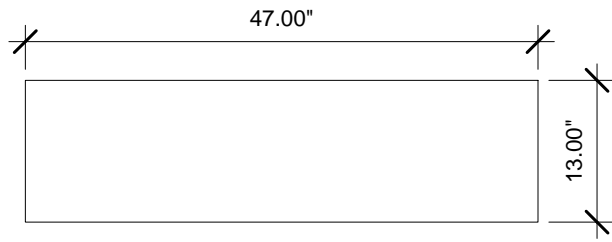


	NAME	DATE
DRAWN	JG	2-8-12
ENG APPR.		
MATERIAL		
300 SERIES S/S		
FINISH		
APPRX WEIGHT = lbs		
DO NOT SCALE DRAWING		

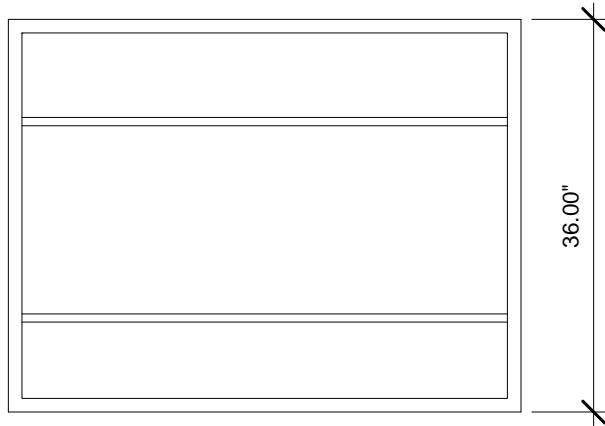
BLICKMAN, INC CLIFTON, NJ		
TITLE: G47LS WALL CABINET		
SIZE A	DWG. NO. 2020447000	REV
SCALE: 1:16		SHEET 1 OF 1

PROPRIETARY AND CONFIDENTIAL
THE INFORMATION CONTAINED IN THIS
DRAWING IS THE SOLE PROPERTY OF
BLICKMAN HEALTH INDUSTRIES. ANY
REPRODUCTION IN PART OR AS A WHOLE
WITHOUT THE WRITTEN PERMISSION OF
BLICKMAN HEALTH INDUSTRIES IS PROHIBITED.

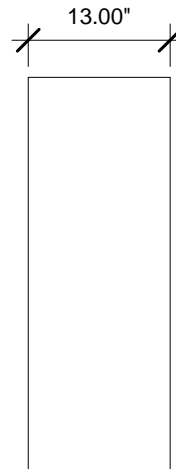
UNLESS OTHERWISE SPECIFIED:
DIMENSIONS ARE IN INCHES
BEND RADIUS = MTL THK.
TOLERANCES:
FRACTION: ± 1/32"
DECIMAL: ± .031"



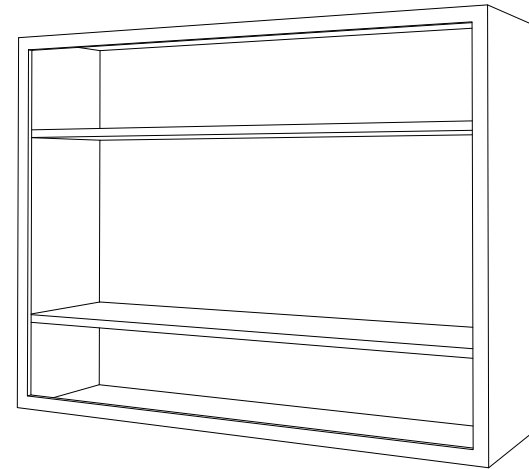
② Top
3/4" = 1'-0"



① Front
3/4" = 1'-0"



③ Right
3/4" = 1'-0"



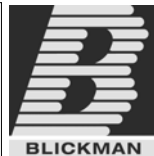
④ 3D View 1

Wall Cabinets are designed for flush face construction with a recessed back panel for uneven wall surfaces. Adjustable shelves on 1/2" increments. Flush Finished bottoms.

PO#: _____ DATE: _____

APPROVAL: _____

TITLE: _____



	NAME	DATE
DRAWN	JG	2-8-12
ENG APPR.		

MATERIAL
300 SERIES S/S

FINISH

APPRX WEIGHT = lbs

DO NOT SCALE DRAWING

BLICKMAN, INC
CLIFTON, NJ

TITLE:
G47MS
WALL CABINET

SIZE A	DWG. NO. 2020447360	REV
------------------	-------------------------------	-----

SCALE: 1:16

SHEET 1 OF 1

PROPRIETARY AND CONFIDENTIAL
THE INFORMATION CONTAINED IN THIS DRAWING IS THE SOLE PROPERTY OF BLICKMAN HEALTH INDUSTRIES. ANY REPRODUCTION IN PART OR AS A WHOLE WITHOUT THE WRITTEN PERMISSION OF BLICKMAN HEALTH INDUSTRIES IS PROHIBITED.

UNLESS OTHERWISE SPECIFIED:
DIMENSIONS ARE IN INCHES
BEND RADIUS = MTL THK.

TOLERANCES:
FRACTION: ± 1/32"
DECIMAL: ± .031"