



# 6570 Portable Wheelchair Scale

## Setup and Operation Instructions

**CAUTION!** This scale weighs approximately *140 pounds*. If you think it is too heavy for you to lower or lift safely, ask someone to help you. Damage to the load cells can occur if the scale is dropped or allowed to fall from the transport position. If damage to the scale is determined to have been caused by falling or dropping scale, the warranty will be voided.

### Scale Setup

**⚠ DO NOT remove Storage Pin or operate Column Release Levers prior to this operation.**

1. From transport position, lay scale on the floor. **DO NOT** use scale on carpeted floors.
2. Stand close to scale with your feet 8 to 12 inches apart, and firmly grasp handles on scale.
3. While stepping back, lower scale to floor, keeping your back straight and bending your knees until you're in a squatting position. **Always keep your back straight, and bend at the knees, until in a squatting position!**
4. Once scale is in position on the floor, remove the Storage Pin.



5. Next, pull Release Levers on both columns toward the handrail to release column/chair seat from scale base.
6. Grasp both columns to lift column/chair seat and step forward to push column/chair seat to up-right position.
7. Continue pushing column/chair seat forward until completely up-right and in the locked position. Listen for a clicking sound to make sure the column/chair seat is locked in the up-right position before lowering the chair seat.



**⚠ WARNING!** Attendant must assist patient onto and off the scale platform, and onto and off scale chair seat. **ONLY** the attendant should move the wheelchair on and off the scale platform. **NEVER** leave a patient unattended while they are on the scale platform and the scale chair seat. Failure to maintain continuous control of the patient can result in serious injury to patient and/or attendant.

### Wheelchair Scale Operation

1. To weigh patient, press the **ON/OFF** key, and then press the **ZERO** key to zero weight display.
2. Position the patient on scale by pulling the wheelchair onto scale. **NEVER PUSH** a patient in a wheelchair on or off the scale. Lock the wheelchair wheels while weighing the patient.
3. When weight reading is steady, read the patient's weight.
4. Remove patient/wheelchair from scale by backing down ramp.

### Stand-On Scale Operation

1. To weigh patient as a Stand-On scale, press the **ON/OFF** key, and then press the **ZERO** key to zero weight display.
2. Assist patient onto the scale platform and have them remain motionless for several seconds until the scale display shows their weight.
3. When weight reading is steady, read patient's weight, and then assist patient off the scale.



### Sit-Down Scale Operation

1. Grasp the chair legs between the arrows and lift approximately six inches.
2. Next, grasp the chair seat frame and pull it forward and down away from the columns.
3. Continue pulling the chair seat frame down to unfold the chair legs.



## 6570 Portable Wheelchair Scale

### Setup and Operation Instructions

#### Sit-Down Scale Operation, Cont.

- With the chair legs unfolded, push down on the chair seat until the chair legs are resting against the scale base. The scale is ready to weigh a patient using the chair seat.
- To weigh patient, press the **ON/OFF** key, and then press the **ZERO** key to zero weight display.
- Assist patient onto the scale chair seat and have them remain motionless for several seconds until the scale display shows their weight.
- When weight reading is steady, read patient's weight, and then assist patient off the scale.



#### Basic MedVue Operations

##### To Weigh

- Press the **ON/OFF** key to turn the indicator on.
- Press the **ZERO** key to zero weight display. The ZERO, GROSS and lb or kg annunciator will turn on to show that the scale is ready for use.
- Assist patient onto scale and read weight display.
- If a printer is connected to scale, press the **PRINT/ENTER** key to print a ticket.
- Assist patient off scale.

##### Zero Weight Display

- If the indicator is not showing zero weight on the display, press the **ZERO** key.
- Weight display will return to zero. The ZERO and STABLE  $\blacktriangle$   $\blacktriangleleft$  annunciators will turn on to show a stable, center-of-zero gross weight condition.

##### Zero Weight Display with Item on Scale (Push Button Tare)

- Place item (wheelchair, walker, etc.) on scale, and then press the **TARE** key.
- Display will change to show ENTER TARE WT, and the weight of item on scale.
- Press **PRINT/ENTER** key.
- Display will return to zero with the NET annunciator turned on, to show that net weight is being displayed. The item's weight has been entered as "tare weight".
- Proceed with weighing operation.

##### Metric Conversion

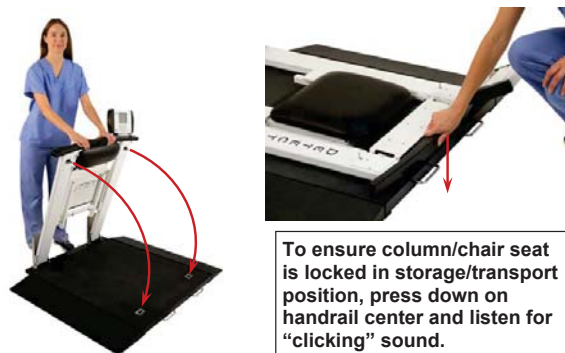
Press the **UNITS** key to toggle between pounds and kilograms. The lb or kg annunciator will turn on to show the weighing unit selected.

#### Storing the Scale

- If scale chair seat is down, lift chair seat up towards handrail.
- Grasp the chair seat frame and push it backwards until it is completely between the columns.
- Next, push the chair legs backward until they are flush with the chair seat frame.



- Pull Release Levers on both columns up towards the handrail to release the column/chair seat from the operating position.
- Grasp handrail and step forward to lower column/chair seat until it is completely against scale base.
- Press down on center of handrail and listen for a "clicking" sound to make sure column/chair seat is locked in storage/transport position.
- Insert Storage Pin in scale before lifting or moving scale.
- Store scale in an up-right position, preferably near a wall for maximum protection against damage.



To ensure column/chair seat is locked in storage/transport position, press down on handrail center and listen for "clicking" sound.



Correct Storage Position